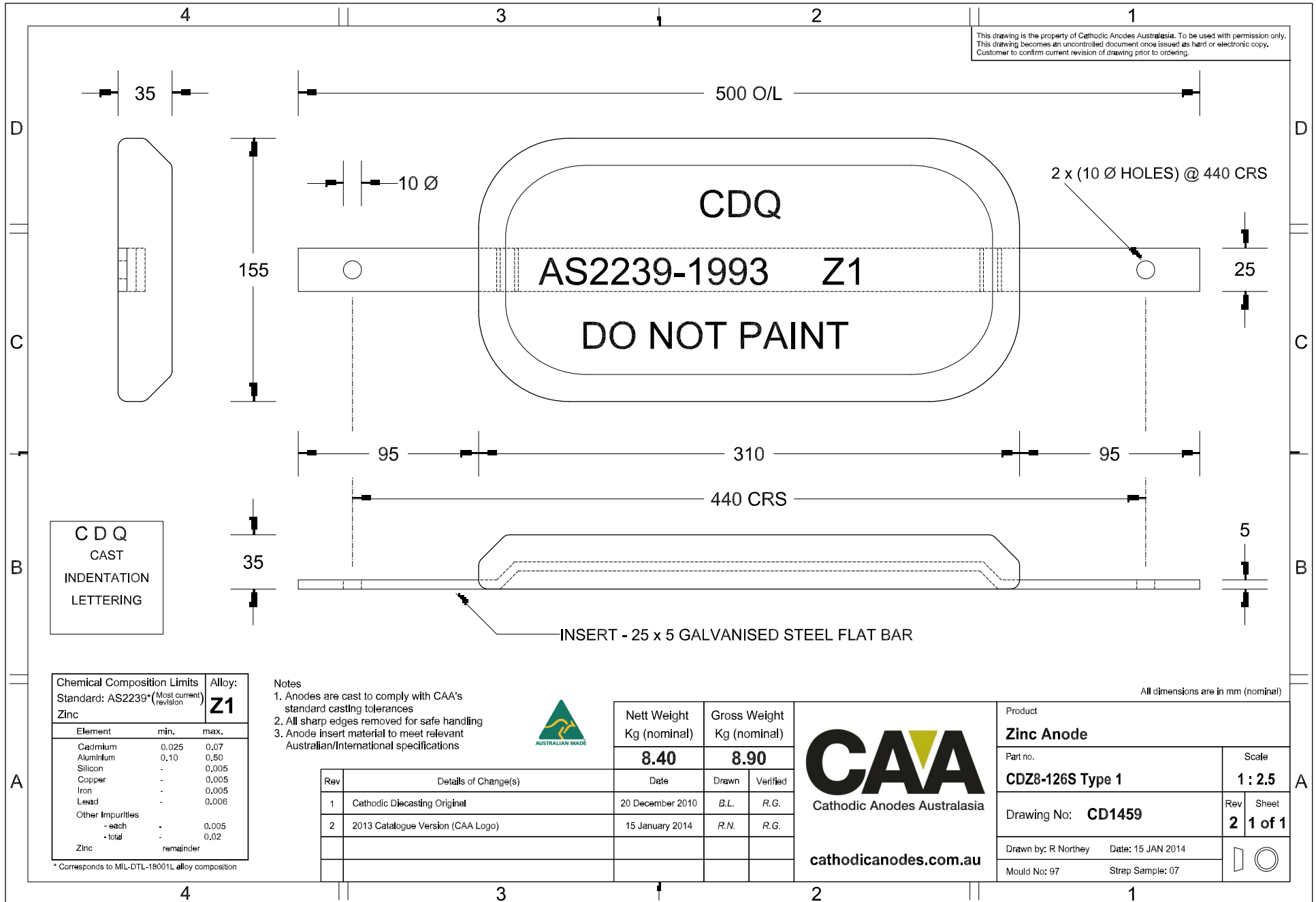


This drawing is the property of Cathodic Anodes Australasia. To be used with permission only.
 This drawing becomes an uncontrolled document once issued as hard or electronic copy.
 Customer to confirm current revision of drawing prior to ordering.



CDQ
 CAST
 INDENTATION
 LETTERING

Chemical Composition Limits		Alloy:
Element	min.	max.
Standard: AS2239* (Most current revision)		
Zinc		Z1
Cadmium	0.025	0.07
Aluminium	0.10	0.50
Silicon	-	0.005
Copper	-	0.005
Iron	-	0.005
Lead	-	0.006
Other Impurities		
- each	-	0.005
- total	-	0.02
Zinc	remainder	

* Corresponds to MIL-DTL-18001L alloy composition

- Notes
1. Anodes are cast to comply with CAA's standard casting tolerances
 2. All sharp edges removed for safe handling
 3. Anode insert material to meet relevant Australian/International specifications



Rev	Details of Change(s)	Date	Drawn	Verified
1	Cathodic Diecasting Original	20 December 2010	B.L.	R.G.
2	2013 Catalogue Version (CAA Logo)	15 January 2014	R.N.	R.G.

Nett Weight Kg (nominal)	Gross Weight Kg (nominal)
8.40	8.90



Product Zinc Anode		Scale 1 : 2.5	
Part no. CDZ8-126S Type 1	Drawing No: CD1459		Rev Sheet 2 1 of 1
Drawn by: R Northey	Date: 15 JAN 2014		
Mould No: 97	Strap Sample: 07		

All dimensions are in mm (nominal)