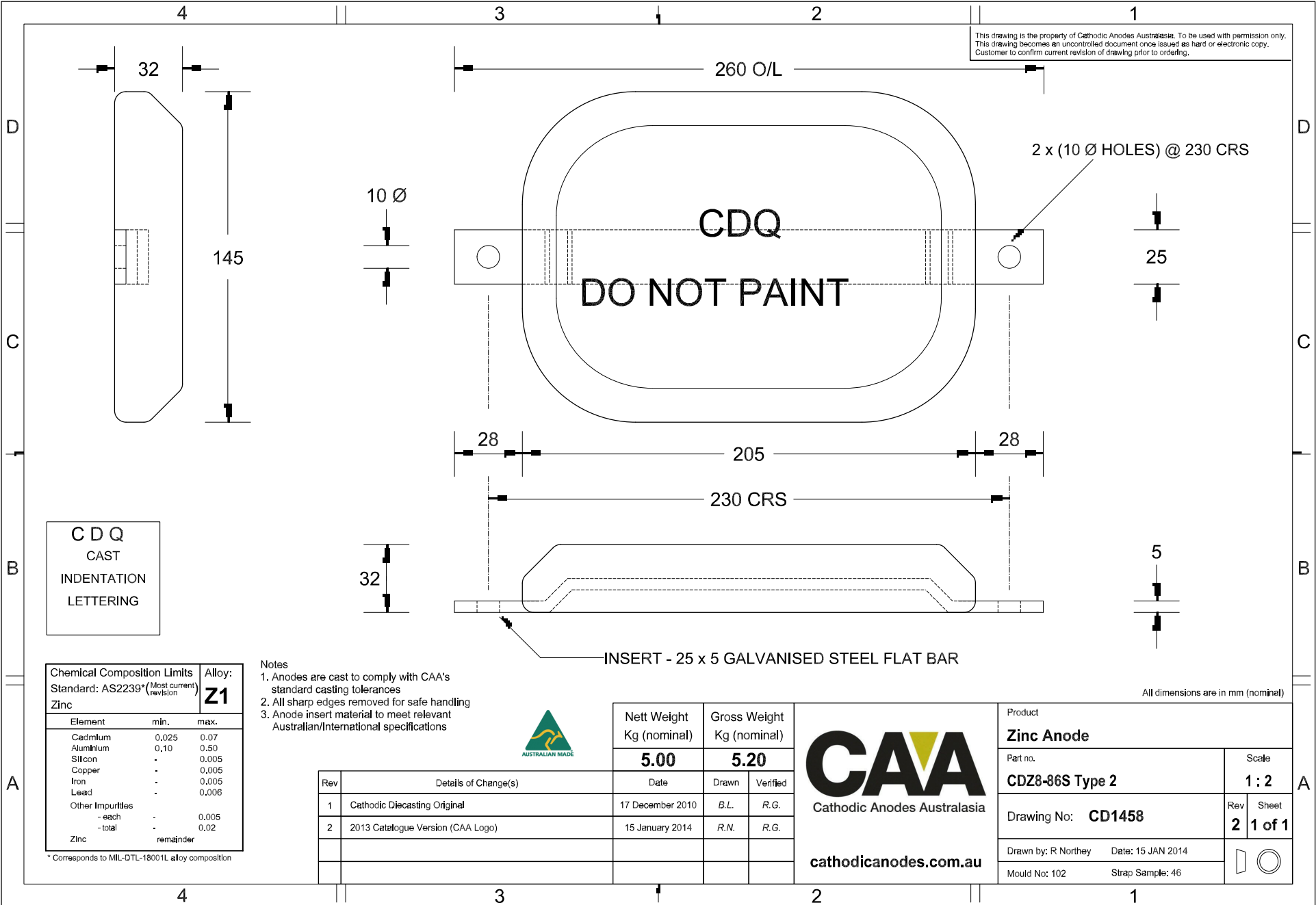


This drawing is the property of Cathodic Anodes Australasia. To be used with permission only. This drawing becomes an uncontrolled document once issued as hard or electronic copy. Customer to confirm current revision of drawing prior to ordering.



CDQ
CAST
INDENTATION
LETTERING

| Chemical Composition Limits | | Alloy: |
|---|-----------|-----------|
| Standard: AS2239* (Most current revision) | | Z1 |
| Element | min. | max. |
| Cadmium | 0.025 | 0.07 |
| Aluminium | 0.10 | 0.50 |
| Silicon | - | 0.005 |
| Copper | - | 0.005 |
| Iron | - | 0.005 |
| Lead | - | 0.006 |
| Other Impurities | - | - |
| - each | - | 0.005 |
| - total | - | 0.02 |
| Zinc | remainder | |

- Notes
- Anodes are cast to comply with CAA's standard casting tolerances
 - All sharp edges removed for safe handling
 - Anode insert material to meet relevant Australian/International specifications



| Rev | Details of Change(s) | Date | Drawn | Verified |
|-----|-----------------------------------|------------------|-------|----------|
| 1 | Cathodic Diecasting Original | 17 December 2010 | B.L. | R.G. |
| 2 | 2013 Catalogue Version (CAA Logo) | 15 January 2014 | R.N. | R.G. |

CAA
 Cathodic Anodes Australasia
cathodicanodes.com.au

| | | | |
|---------------------|------------------------|-------------------|---------------|
| Product | | Zinc Anode | |
| Part no. | CDZ8-86S Type 2 | Scale | 1 : 2 |
| Drawing No: | CD1458 | Rev | 2 |
| | | Sheet | 1 of 1 |
| Drawn by: R Northey | Date: 15 JAN 2014 | | |
| Mould No: 102 | Strap Sample: 46 | | |

* Corresponds to MIL-DTL-18001L alloy composition

All dimensions are in mm (nominal)