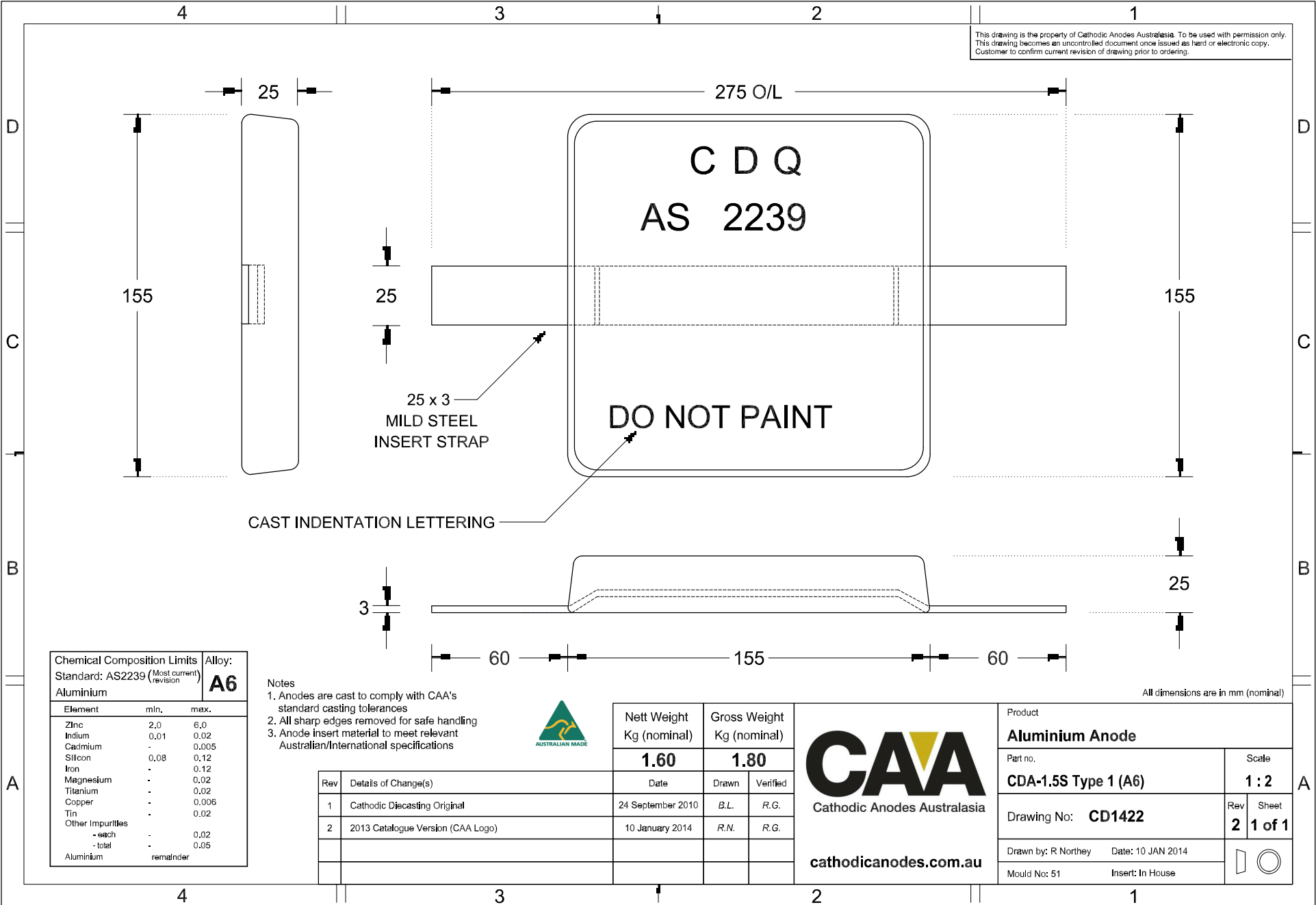


This drawing is the property of Cathodic Anodes Australasia. To be used with permission only. This drawing becomes an uncontrolled document once issued as hard or electronic copy. Customer to confirm current revision of drawing prior to ordering.



CAST INDENTATION LETTERING

25 x 3 MILD STEEL INSERT STRAP

DO NOT PAINT

Chemical Composition Limits			Alloy: A6
Element	min.	max.	
Zinc	2.0	6.0	
Indium	0.01	0.02	
Cadmium	-	0.005	
Silicon	0.08	0.12	
Iron	-	0.12	
Magnesium	-	0.02	
Titanium	-	0.02	
Copper	-	0.006	
Tin	-	0.02	
Other Impurities	-	-	
- each	-	0.02	
- total	-	0.05	
Aluminium	remainder		

- Notes
1. Anodes are cast to comply with CAA's standard casting tolerances
 2. All sharp edges removed for safe handling
 3. Anode insert material to meet relevant Australian/International specifications



Rev	Details of Change(s)	Date	Drawn	Verified
1	Cathodic Diecasting Original	24 September 2010	B.L.	R.G.
2	2013 Catalogue Version (CAA Logo)	10 January 2014	R.N.	R.G.

Nett Weight Kg (nominal)	Gross Weight Kg (nominal)
1.60	1.80



Product Aluminium Anode	
Part no. CDA-1.5S Type 1 (A6)	Scale 1 : 2
Drawing No: CD1422	Rev Sheet 2 1 of 1
Drawn by: R Northey Date: 10 JAN 2014	
Mould No: 51 Insert: In House	

All dimensions are in mm (nominal)