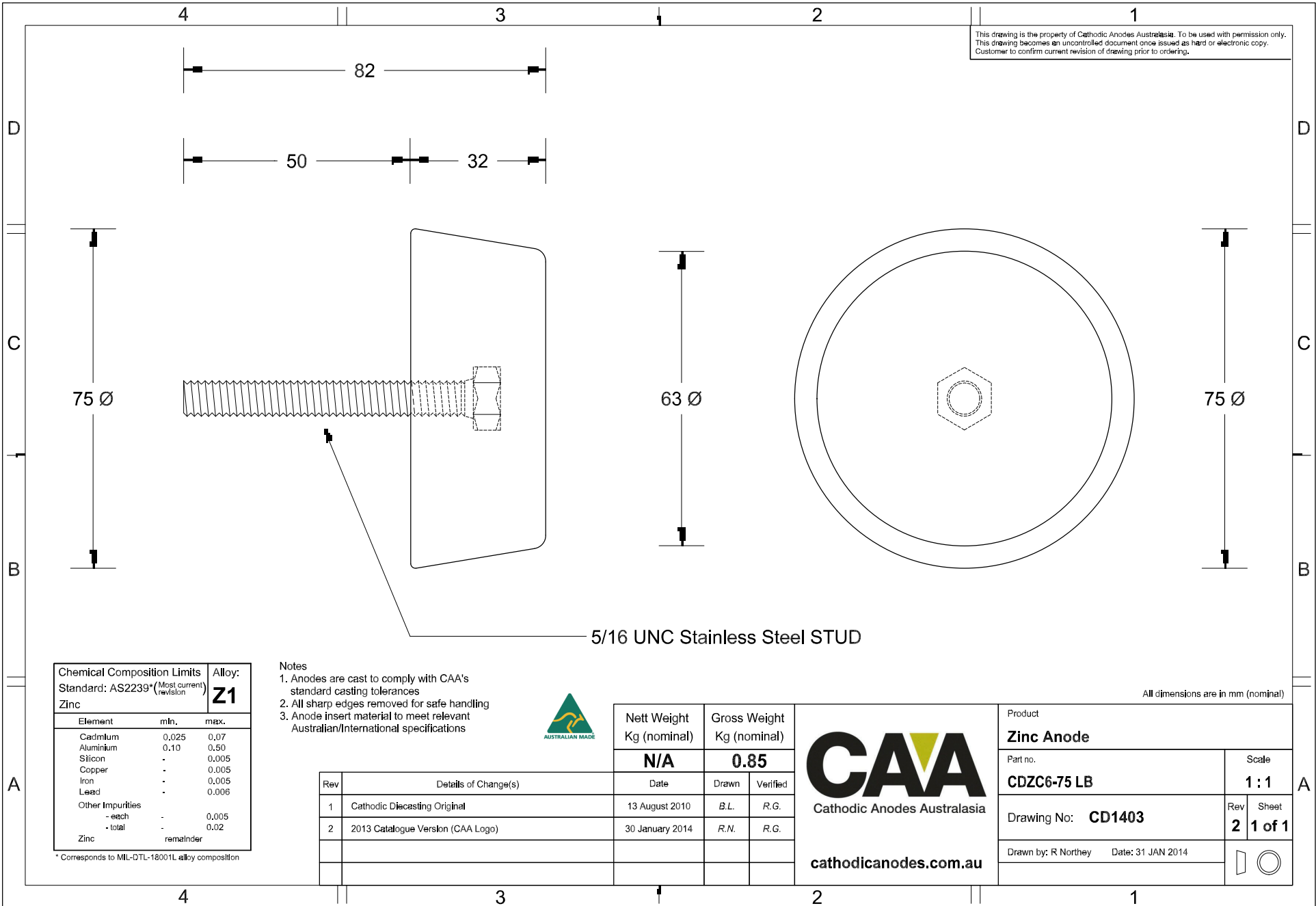


This drawing is the property of Cathodic Anodes Australasia. To be used with permission only.
 This drawing becomes an uncontrolled document once issued as hard or electronic copy.
 Customer to confirm current revision of drawing prior to ordering.



D

D

C

C

B

B

A

A

Chemical Composition Limits		Alloy:
Standard: AS2239* (Most current revision)		Z1
Element	min.	max.
Cadmium	0.025	0.07
Aluminium	0.10	0.50
Silicon	-	0.005
Copper	-	0.005
Iron	-	0.005
Lead	-	0.006
Other Impurities	-	-
- each	-	0.005
- total	-	0.02
Zinc	remainder	

* Corresponds to MIL-DTL-18001L alloy composition

Notes

1. Anodes are cast to comply with CAA's standard casting tolerances
2. All sharp edges removed for safe handling
3. Anode insert material to meet relevant Australian/International specifications



5/16 UNC Stainless Steel STUD

All dimensions are in mm (nominal)

Rev	Details of Change(s)	Date	Nett Weight		Gross Weight	
			Kg (nominal)		Kg (nominal)	
1	Cathodic Diecasting Original	13 August 2010	N/A		0.85	
2	2013 Catalogue Version (CAA Logo)	30 January 2014				

<p>Cathodic Anodes Australasia</p> <p>cathodicanodes.com.au</p>	Product		Zinc Anode	
	Part no.		CDZC6-75 LB	
	Drawing No:		CD1403	
	Scale		1 : 1	
Drawn by: R Northey		Date: 31 JAN 2014		Rev Sheet
				2 1 of 1

4

3

2

1