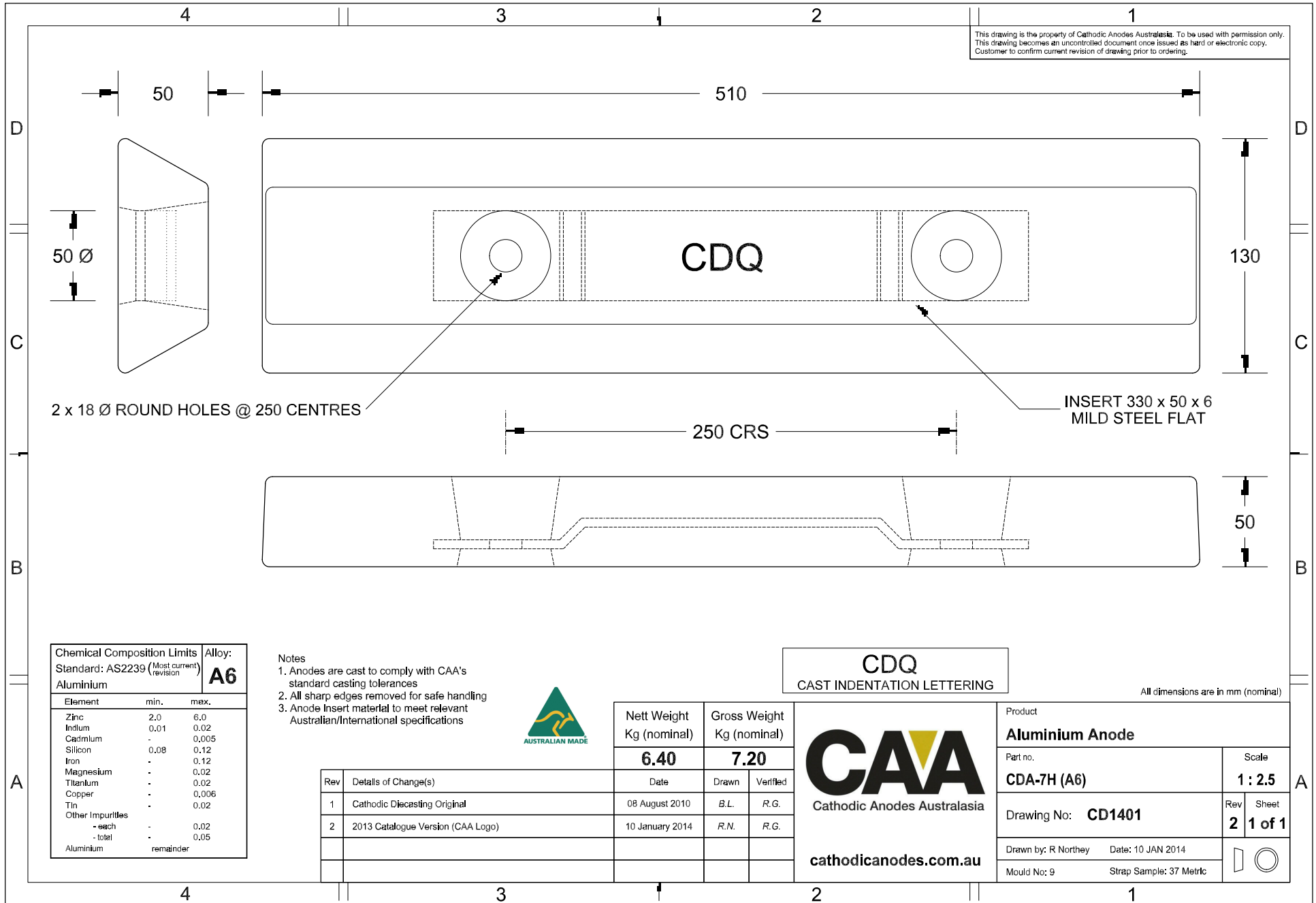


This drawing is the property of Cathodic Anodes Australasia. To be used with permission only.  
 This drawing becomes an uncontrolled document once issued as hard or electronic copy.  
 Customer to confirm current revision of drawing prior to ordering.



Chemical Composition Limits		Alloy:
Standard: AS2239 (Most current revision)		<b>A6</b>
Element	min.	max.
Zinc	2.0	6.0
Indium	0.01	0.02
Cadmium	-	0.005
Silicon	0.08	0.12
Iron	-	0.12
Magnesium	-	0.02
Titanium	-	0.02
Copper	-	0.006
Tin	-	0.02
Other Impurities		
- each	-	0.02
- total	-	0.05
Aluminium		remainder

- Notes
1. Anodes are cast to comply with CAA's standard casting tolerances
  2. All sharp edges removed for safe handling
  3. Anode Insert material to meet relevant Australian/International specifications



Rev	Details of Change(s)	Date	Nett Weight		Gross Weight	
			Kg (nominal)		Kg (nominal)	
1	Cathodic Diecasting Original	08 August 2010	<b>6.40</b>		<b>7.20</b>	
2	2013 Catalogue Version (CAA Logo)	10 January 2014				

 Cathodic Anodes Australasia		Product	
		<b>Aluminium Anode</b>	
Part no.		Scale	
<b>CDA-7H (A6)</b>		<b>1 : 2.5</b>	
Drawing No: <b>CD1401</b>		Rev	Sheet
		<b>2</b>	<b>1 of 1</b>
Drawn by: R Northey Date: 10 JAN 2014			
Mould No: 9 Strap Sample: 37 Metric			

[cathodicanodes.com.au](http://cathodicanodes.com.au)