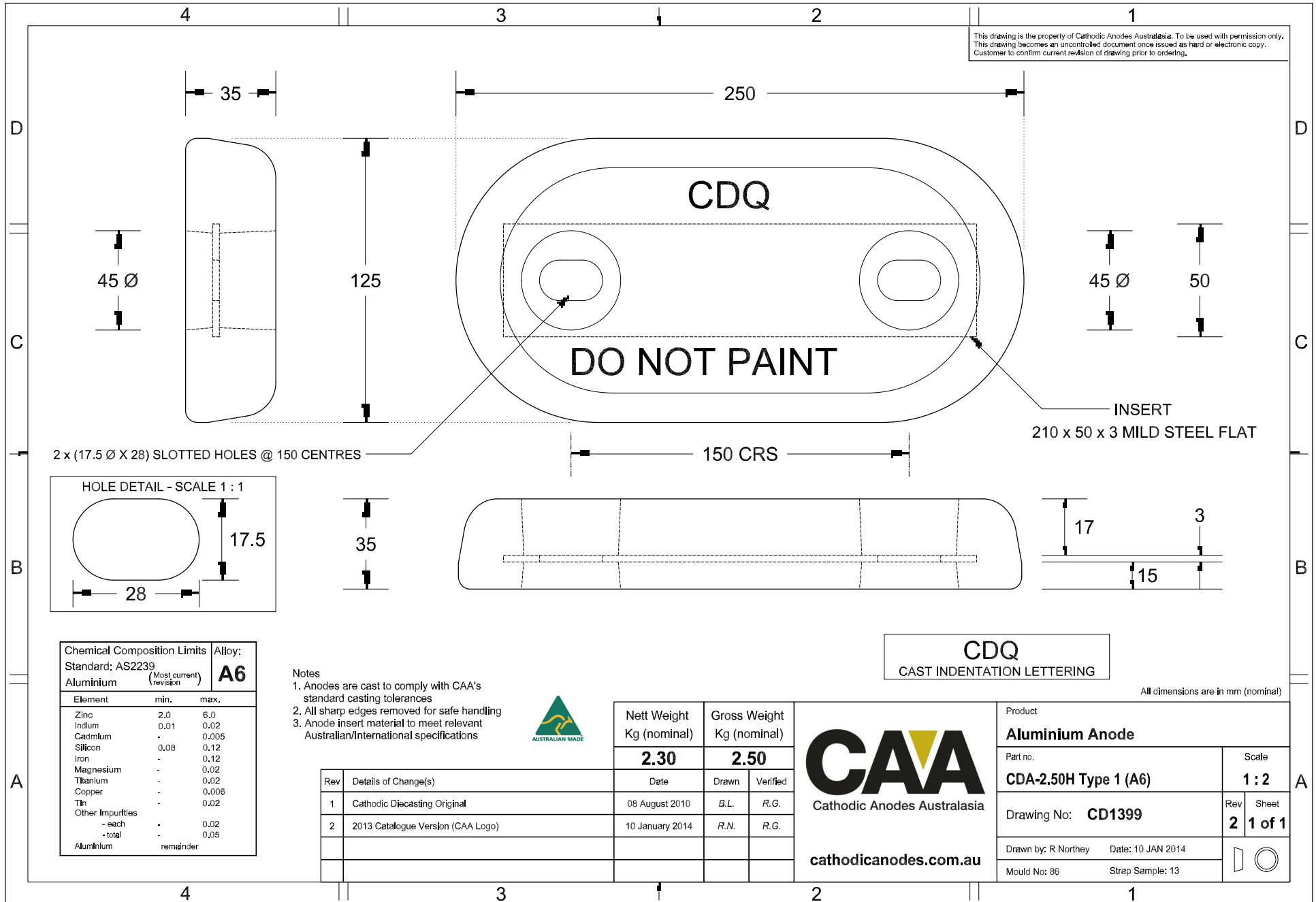


This drawing is the property of Cathodic Anodes Australasia. To be used with permission only. This drawing becomes an uncontrolled document once issued as hard or electronic copy. Customer to confirm current revision of drawing prior to ordering.



Chemical Composition Limits			Alloy: A6
Element	min.	max.	
Standard: AS2239 (Most current revision)			
Zinc	2.0	6.0	Aluminium remainder
Indium	0.01	0.02	
Cadmium	-	0.005	
Silicon	0.08	0.12	
Iron	-	0.12	
Magnesium	-	0.02	
Titanium	-	0.02	
Copper	-	0.006	
Tin	-	0.02	
Other Impurities	-	-	
- each	-	0.02	
- total	-	0.05	

- Notes
- Anodes are cast to comply with CAA's standard casting tolerances
 - All sharp edges removed for safe handling
 - Anode insert material to meet relevant Australian/International specifications



CDQ
CAST INDENTATION LETTERING

All dimensions are in mm (nominal)

Rev	Details of Change(s)	Date	Nett Weight		Gross Weight	
			Kg (nominal)	Kg (nominal)	Kg (nominal)	Kg (nominal)
			2.30	2.50		
1	Cathodic Diecasting Original	08 August 2010			B.L.	R.G.
2	2013 Catalogue Version (CAA Logo)	10 January 2014			R.N.	R.G.

CAA
Cathodic Anodes Australasia
cathodicanodes.com.au

Product Aluminium Anode			
Part no. CDA-2.50H Type 1 (A6)		Scale 1 : 2	
Drawing No: CD1399		Rev 2	Sheet 1 of 1
Drawn by: R Northey Date: 10 JAN 2014			
Mould No: 86		Strap Sample: 13	