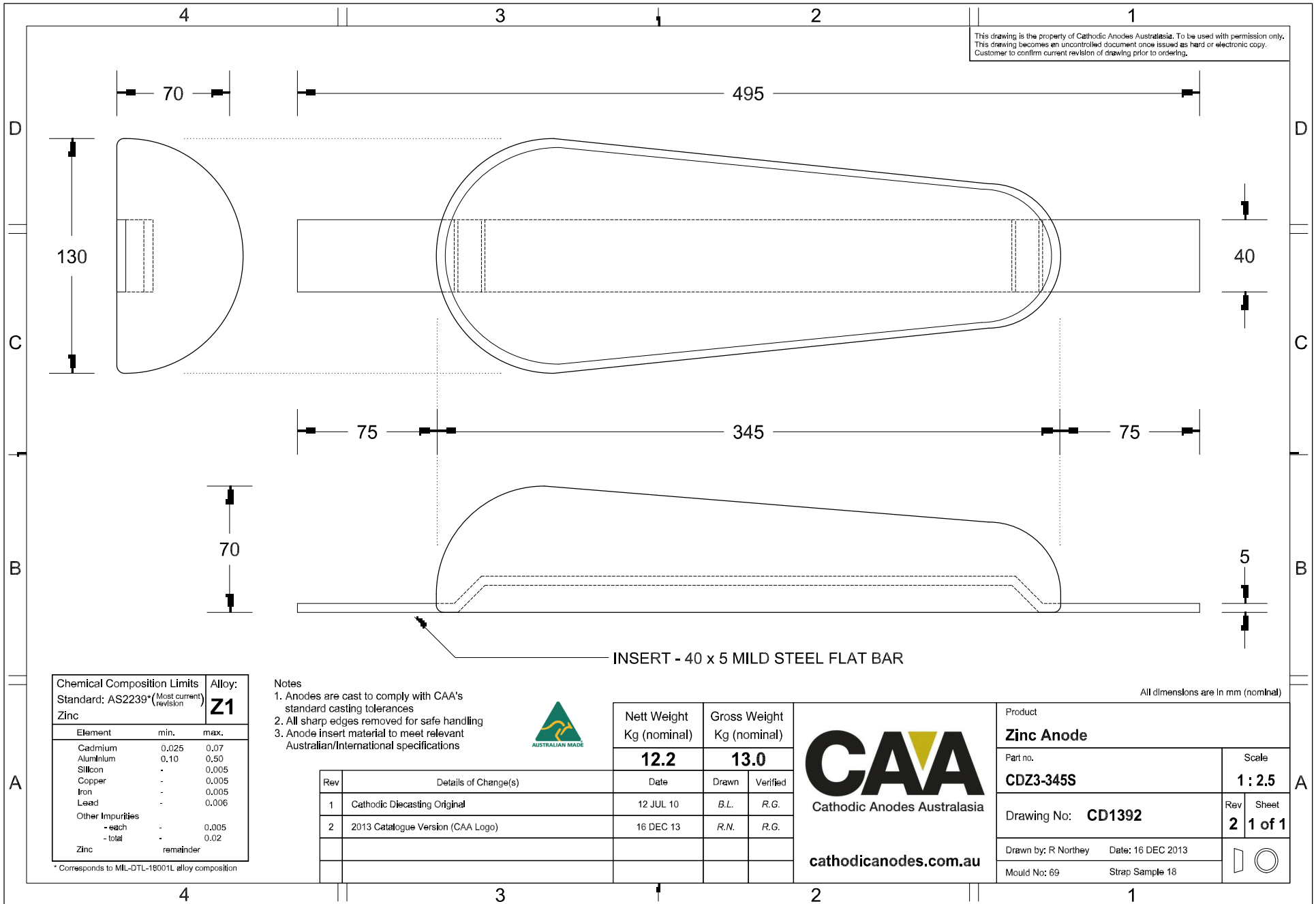


This drawing is the property of Cathodic Anodes Australasia. To be used with permission only.
 This drawing becomes an uncontrolled document once issued as hard or electronic copy.
 Customer to confirm current revision of drawing prior to ordering.



INSERT - 40 x 5 MILD STEEL FLAT BAR

All dimensions are in mm (nominal)

| Chemical Composition Limits | | Alloy: | |
|---|-------|-----------|--|
| Standard: AS2239* (Most current revision) | | Z1 | |
| Element | min. | max. | |
| Cadmium | 0.025 | 0.07 | |
| Aluminium | 0.10 | 0.50 | |
| Silicon | - | 0.005 | |
| Copper | - | 0.005 | |
| Iron | - | 0.005 | |
| Lead | - | 0.006 | |
| Other Impurities | | | |
| - each | - | 0.005 | |
| - total | - | 0.02 | |
| Zinc | | remainder | |

* Corresponds to MIL-DTL-18001L alloy composition

Notes

1. Anodes are cast to comply with CAA's standard casting tolerances
2. All sharp edges removed for safe handling
3. Anode insert material to meet relevant Australian/International specifications



| Rev | Details of Change(s) | Date | Drawn | Verified |
|-----|-----------------------------------|-----------|-------|----------|
| 1 | Cathodic Diecasting Original | 12 JUL 10 | B.L. | R.G. |
| 2 | 2013 Catalogue Version (CAA Logo) | 16 DEC 13 | R.N. | R.G. |

| Nett Weight Kg (nominal) | Gross Weight Kg (nominal) |
|-----------------------------|------------------------------|
| 12.2 | 13.0 |

CAA
 Cathodic Anodes Australasia
 cathodicanodes.com.au

| | | | |
|---------------------------------------|-----------------|-------------------------|------------------------|
| Product Zinc Anode | | Scale 1 : 2.5 | |
| Part no. CDZ3-345S | Rev 2 | | Sheet 1 of 1 |
| Drawing No: CD1392 | | Mould No: 69 | |
| Drawn by: R Northey Date: 16 DEC 2013 | | Strap Sample 18 | |