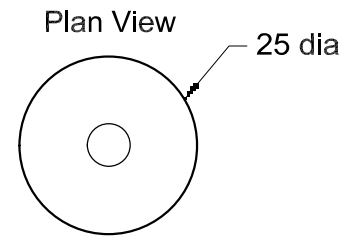
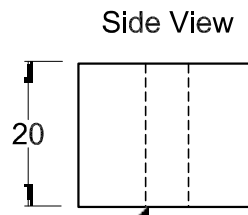


This drawing is the property of Cathodic Anodes Australasia. To be used with permission only. This drawing becomes an uncontrolled document once issued as hard or electronic copy. Customer to confirm current revision of drawing prior to ordering.



M6 x 1.0 tapped through

All dimensions are in mm (nominal)

Chemical Composition Limits		Alloy:
Standard: AS2239* (Most current revision)		<b>Z1</b>
Zinc		
Element	min.	max.
Cadmium	0.025	0.07
Aluminium	0.10	0.50
Silicon	-	0.005
Copper	-	0.005
Iron	-	0.005
Lead	-	0.006
Other Impurities		
- each	-	0.005
- total	-	0.02
Zinc	remainder	

- Notes
1. Anodes are cast to comply with CAA's standard casting tolerances
  2. All sharp edges removed for safe handling
  3. Anode insert material to meet relevant Australian/International specifications



Nett Weight Kg (nominal)	Gross Weight Kg (nominal)
	<b>0.07</b>

**CAA**  
Cathodic Anodes Australasia  
cathodicanodes.com.au

Product <b>Zinc Anode</b>		Scale <b>1 to 1</b>	
Part no. <b>CDZ9-152A</b>		Rev	Sheet
Drawing no. <b>CD1391</b>		<b>2</b>	<b>1 of 1</b>
Drawn by: BL Verified by: JL Date: 18MAR15			

Rev	Details of Change(s)	Date	Drawn	Verified
1	For manufacture	18MAR15	BL	JL

\* Corresponds to MIL-DTL-18001L alloy composition