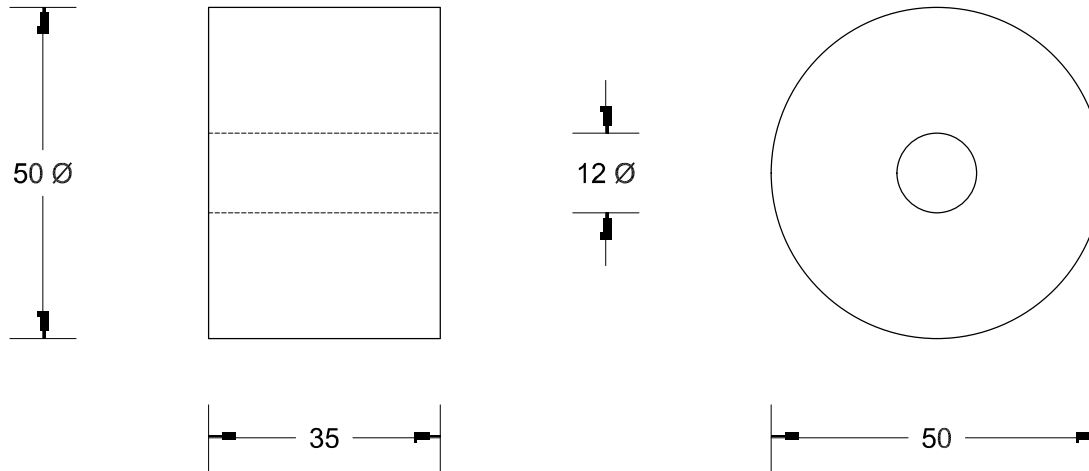


This drawing is the property of Cathodic Anodes Australasia. To be used with permission only.  
 This drawing becomes an uncontrolled document once issued as hard or electronic copy.  
 Customer to confirm current revision of drawing prior to ordering.

NO SHARP EDGES



Chemical Composition Limits			Alloy: <b>Z1</b>
Element	min.	max.	
Standard: AS2239* (Most current revision)			
<b>Zinc</b>			
Cadmium	0.025	0.07	
Aluminium	0.10	0.50	
Silicon	-	0.005	
Copper	-	0.005	
Iron	-	0.005	
Lead	-	0.006	
Other Impurities			
- each	-	0.005	
- total	-	0.02	
Zinc	remainder		

\* Corresponds to MIL-DTL-18001L alloy composition

Notes

1. Anodes are cast to comply with CAA's standard casting tolerances
2. All sharp edges removed for safe handling
3. Anode insert material to meet relevant Australian/International specifications



Rev	Details of Change(s)	Date	Drawn	Verified
1	Initial Drawing	13 May 2010	B.L.	R.G.
2	2013 Catalogue Version	24 March 2016	R.N.	R.G.

Nett Weight Kg (nominal)	Gross Weight Kg (nominal)
<b>N/A</b>	<b>0.450</b>

**CAA**  
 Cathodic Anodes Australasia  
 cathodicanodes.com.au

All dimensions are in mm (nominal)

Product <b>Zinc Cylinder (Bush) Anode</b>	
Part no. <b>CDZ9 - 151</b>	Scale <b>1 : 1</b>
Drawing No: <b>CD1373</b>	Rev Sheet <b>2 1 of 1</b>
Drawn by: R Northey Date: 24 MAR 2016	

