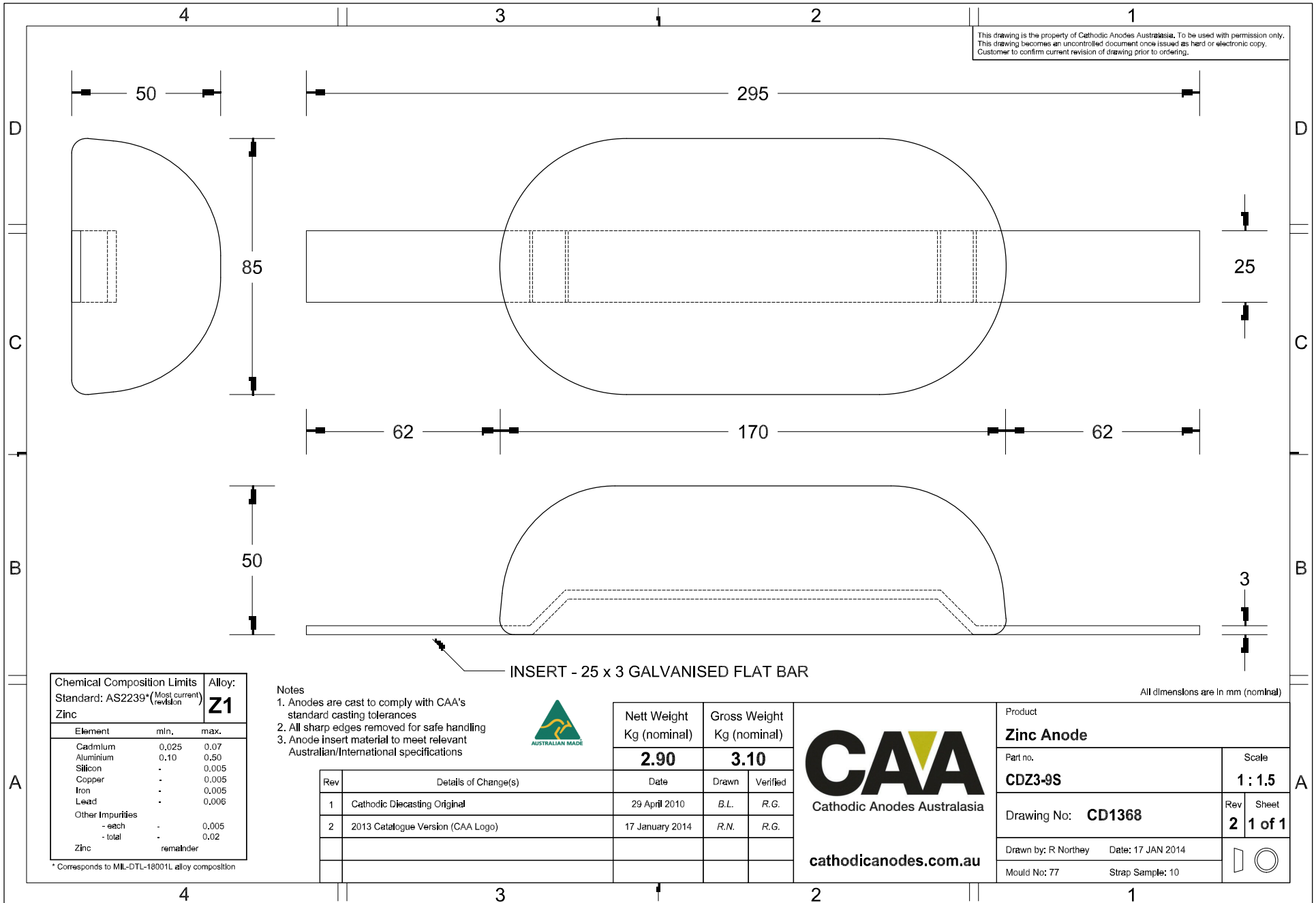


This drawing is the property of Cathodic Anodes Australasia. To be used with permission only.
 This drawing becomes an uncontrolled document once issued as hard or electronic copy.
 Customer to confirm current revision of drawing prior to ordering.



INSERT - 25 x 3 GALVANISED FLAT BAR

All dimensions are in mm (nominal)

Chemical Composition Limits		Alloy:
Standard: AS2239* (Most current revision)		Z1
Element	min.	max.
Cadmium	0.025	0.07
Aluminium	0.10	0.50
Silicon	-	0.005
Copper	-	0.005
Iron	-	0.005
Lead	-	0.006
Other Impurities		
- each	-	0.005
- total	-	0.02
Zinc		remainder

* Corresponds to MIL-DTL-18001L alloy composition

Notes

1. Anodes are cast to comply with CAA's standard casting tolerances
2. All sharp edges removed for safe handling
3. Anode insert material to meet relevant Australian/International specifications



Rev	Details of Change(s)	Date	Drawn	Verified
1	Cathodic Diecasting Original	29 April 2010	B.L.	R.G.
2	2013 Catalogue Version (CAA Logo)	17 January 2014	R.N.	R.G.

Nett Weight	Gross Weight
Kg (nominal)	Kg (nominal)
2.90	3.10

CAA
 Cathodic Anodes Australasia
 cathodicanodes.com.au

Product		Zinc Anode	
Part no.	CDZ3-9S	Scale	1 : 1.5
Drawing No:	CD1368	Rev	2
		Sheet	1 of 1
Drawn by: R Northey	Date: 17 JAN 2014		
Mould No: 77	Strap Sample: 10		