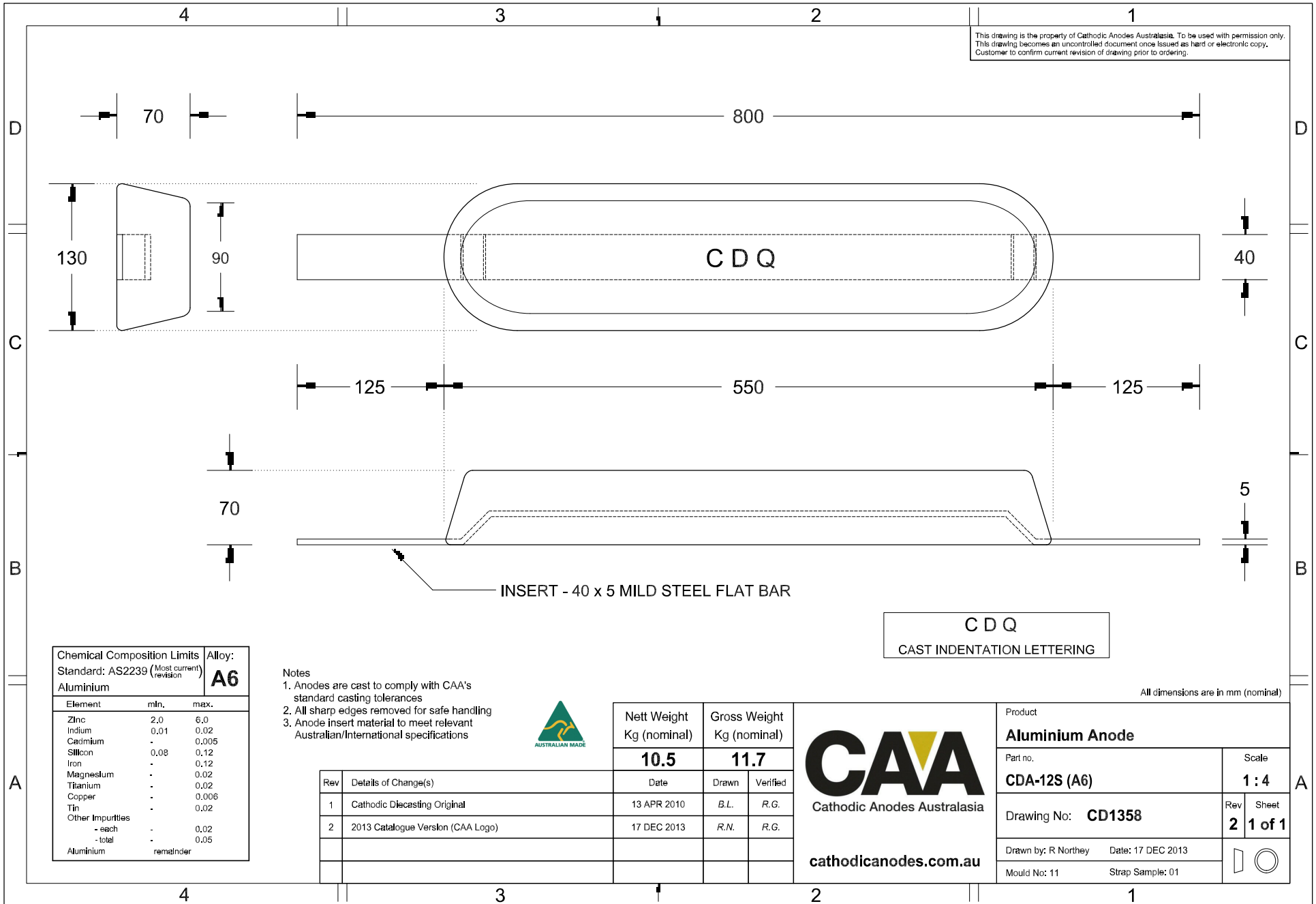


This drawing is the property of Cathodic Anodes Australasia. To be used with permission only.  
 This drawing becomes an uncontrolled document once issued as hard or electronic copy.  
 Customer to confirm current revision of drawing prior to ordering.



Chemical Composition Limits		Alloy:
Standard: AS2239 (Most current revision)		<b>A6</b>
Aluminium		
Element	min.	max.
Zinc	2.0	6.0
Indium	0.01	0.02
Cadmium	-	0.005
Silicon	0.08	0.12
Iron	-	0.12
Magnesium	-	0.02
Titanium	-	0.02
Copper	-	0.006
Tin	-	0.02
Other Impurities		
- each	-	0.02
- total	-	0.05
Aluminium	remainder	

- Notes
1. Anodes are cast to comply with CAA's standard casting tolerances
  2. All sharp edges removed for safe handling
  3. Anode insert material to meet relevant Australian/International specifications



Rev	Details of Change(s)	Date		Drawn		Verified	
1	Cathodic Diecasting Original	13 APR 2010	B.L.	R.G.			
2	2013 Catalogue Version (CAA Logo)	17 DEC 2013	R.N.	R.G.			

Nett Weight	Gross Weight
Kg (nominal)	Kg (nominal)
<b>10.5</b>	<b>11.7</b>

**CAA**  
 Cathodic Anodes Australasia  
[cathodicanodes.com.au](http://cathodicanodes.com.au)

Product <b>Aluminium Anode</b>	
Part no. <b>CDA-12S (A6)</b>	Scale <b>1 : 4</b>
Drawing No: <b>CD1358</b>	Rev <b>2</b> Sheet <b>1 of 1</b>
Drawn by: R Northey	Date: 17 DEC 2013
Mould No: 11	Strap Sample: 01

All dimensions are in mm (nominal)