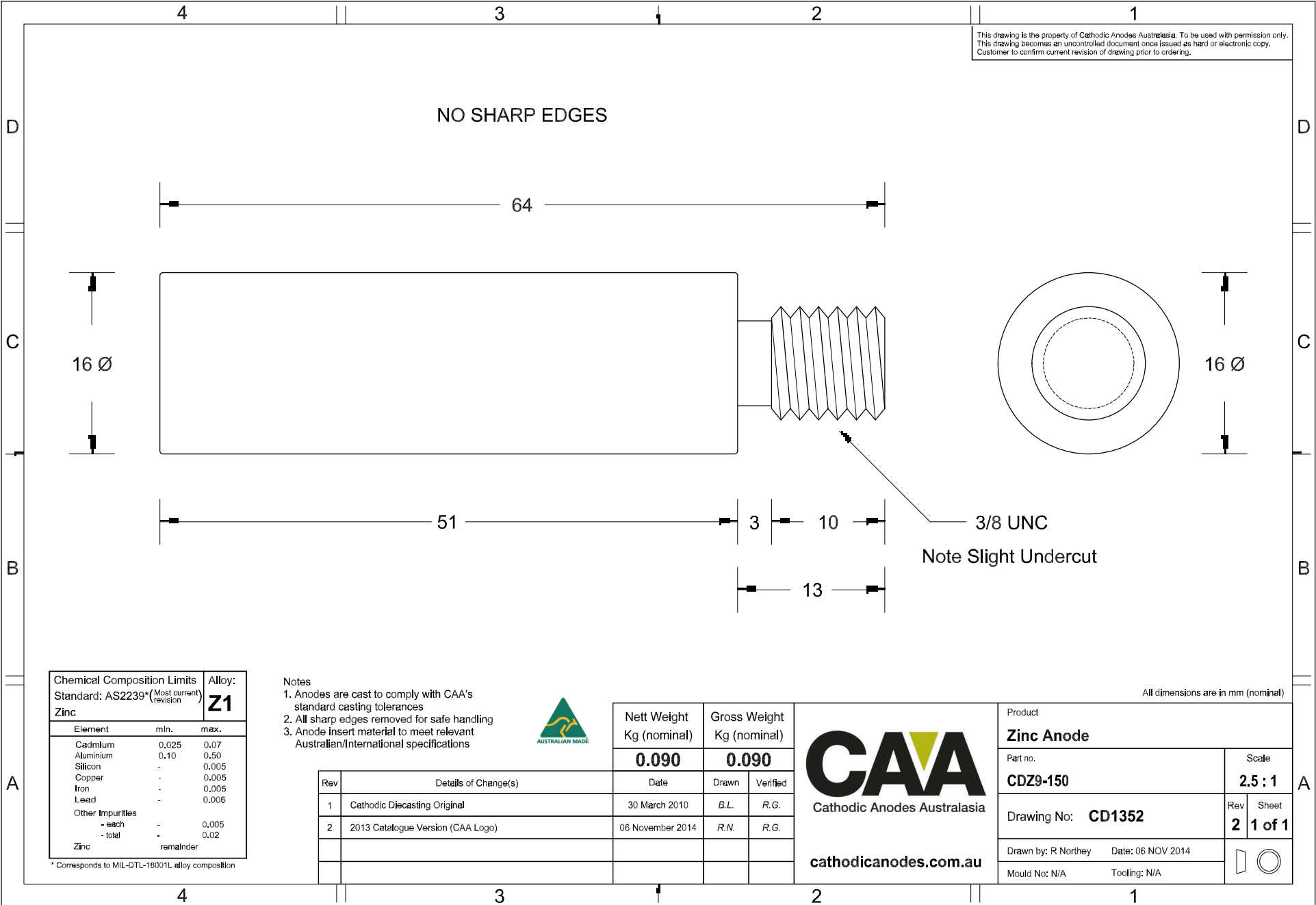


This drawing is the property of Cathodic Anodes Australasia. To be used with permission only.
 This drawing becomes an uncontrolled document once issued as hard or electronic copy.
 Customer to confirm current revision of drawing prior to ordering.

NO SHARP EDGES



Chemical Composition Limits		Alloy:
Standard: AS2239* (Most current revision)		Z1
Element	min. max.	
Zinc		
Cadmium	0.025 0.07	
Aluminium	0.10 0.50	
Silicon	- 0.005	
Copper	- 0.005	
Iron	- 0.005	
Lead	- 0.006	
Other Impurities		
- each	- 0.005	
- total	- 0.02	
Zinc	remainder	

* Corresponds to MIL-DTL-18001L alloy composition

- Notes
1. Anodes are cast to comply with CAA's standard casting tolerances
 2. All sharp edges removed for safe handling
 3. Anode insert material to meet relevant Australian/International specifications



Rev	Details of Change(s)	Date	Drawn	Verified
1	Cathodic Diecasting Original	30 March 2010	B.L.	R.G.
2	2013 Catalogue Version (CAA Logo)	06 November 2014	R.N.	R.G.

Nett Weight Kg (nominal)	Gross Weight Kg (nominal)
0.090	0.090



Product Zinc Anode	
Part no. CDZ9-150	Scale 2.5 : 1
Drawing No: CD1352	Rev Sheet 2 1 of 1
Drawn by: R Northey Date: 06 NOV 2014	
Mould No: N/A Tooling: N/A	

All dimensions are in mm (nominal)