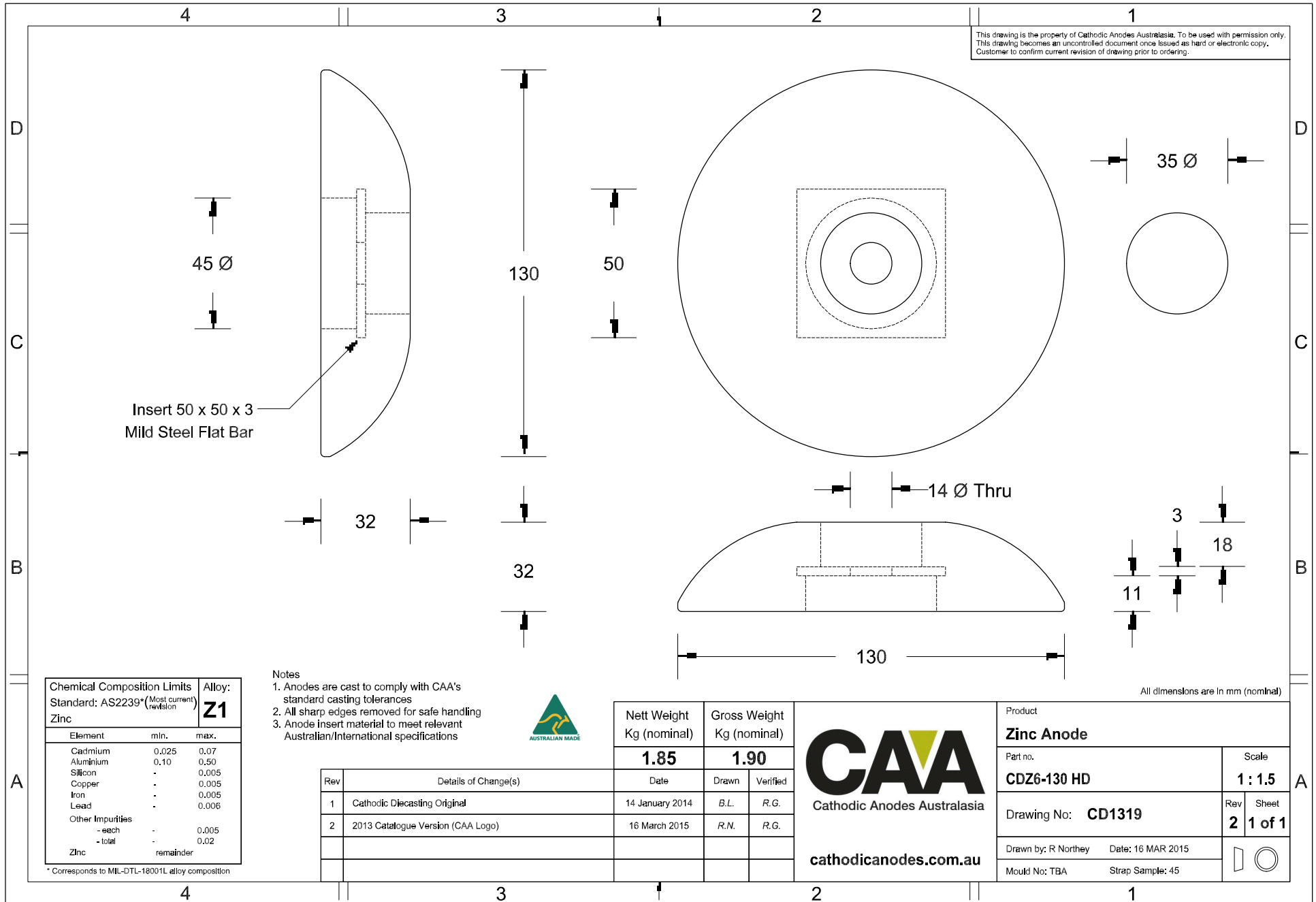


This drawing is the property of Cathodic Anodes Australasia. To be used with permission only.  
 This drawing becomes an uncontrolled document once issued as hard or electronic copy.  
 Customer to confirm current revision of drawing prior to ordering.



Insert 50 x 50 x 3  
Mild Steel Flat Bar

Notes

1. Anodes are cast to comply with CAA's standard casting tolerances
2. All sharp edges removed for safe handling
3. Anode insert material to meet relevant Australian/International specifications



All dimensions are in mm (nominal)

Chemical Composition Limits		Alloy:
Standard: AS2239* (Most current revision)		Z1
Element	min.	max.
Cadmium	0.025	0.07
Aluminium	0.10	0.50
Silicon	-	0.005
Copper	-	0.005
Iron	-	0.005
Lead	-	0.006
Other Impurities		
- each	-	0.005
- total	-	0.02
Zinc	remainder	

\* Corresponds to MIL-DTL-18001L alloy composition

Rev	Details of Change(s)	Date	Drawn	Verified
1	Cathodic Diecasting Original	14 January 2014	B.L.	R.G.
2	2013 Catalogue Version (CAA Logo)	16 March 2015	R.N.	R.G.

Nett Weight Kg (nominal)	Gross Weight Kg (nominal)
<b>1.85</b>	<b>1.90</b>

**CAA**  
Cathodic Anodes Australasia  
cathodicanodes.com.au

Product <b>Zinc Anode</b>	
Part no. <b>CDZ6-130 HD</b>	Scale <b>1 : 1.5</b>
Drawing No: <b>CD1319</b>	Rev Sheet <b>2 1 of 1</b>
Drawn by: R Northey Date: 16 MAR 2015	
Mould No: TBA Strap Sample: 45	