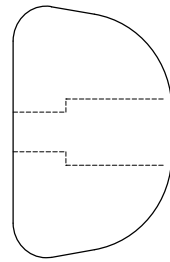


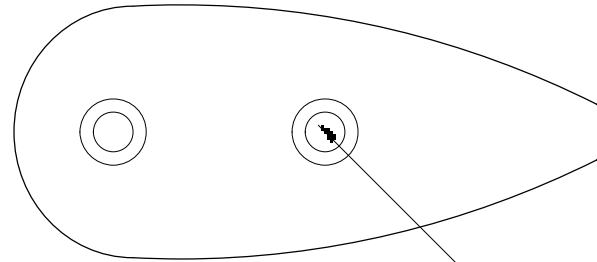
This drawing is the property of Cathodic Anodes Australasia. To be used with permission only.
 This drawing becomes an uncontrolled document once issued as hard or electronic copy.
 Customer to confirm current revision of drawing prior to ordering.

22

90



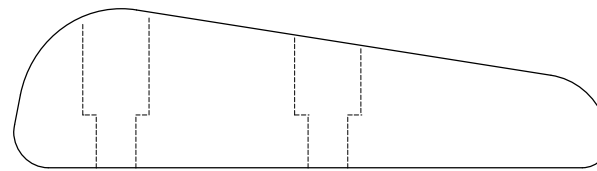
38



32 CRS

2 x 6 Ø HOLES @ 32 CENTRES
 CLEARANCE = 10mm Ø HOLE

22



Chemical Composition Limits		Alloy:
Standard: AS2239* (Most current revision)		Z1
Element	min.	max.
Zinc		
Cadmium	0.025	0.07
Aluminium	0.10	0.50
Silicon	-	0.005
Copper	-	0.005
Iron	-	0.005
Lead	-	0.006
Other Impurities		
- each	-	0.005
- total	-	0.02
Zinc	remainder	

* Corresponds to MIL-DTL-18001L alloy composition

- Notes
- Anodes are cast to comply with CAA's standard casting tolerances
 - All sharp edges removed for safe handling
 - Anode insert material to meet relevant Australian/International specifications



Rev	Details of Change(s)	Date	Drawn	Verified
1	Cathodic Diecasting Original	13 January 2010	B.L.	R.G.
2	2013 Catalogue Version (CAA Logo)	17 January 2014	R.N.	R.G.

Nett Weight Kg (nominal)	Gross Weight Kg (nominal)
0.26	N/A

CAA
 Cathodic Anodes Australasia
 cathodicanodes.com.au

Product Zinc Anode		Scale 1:1	
Part no. CDZ3-3.5H		Rev 2	Sheet 1 of 1
Drawing No: CD1316			
Drawn by: R Northey Date: 17 JAN 2014		Mould No: 68	

All dimensions are in mm (nominal)