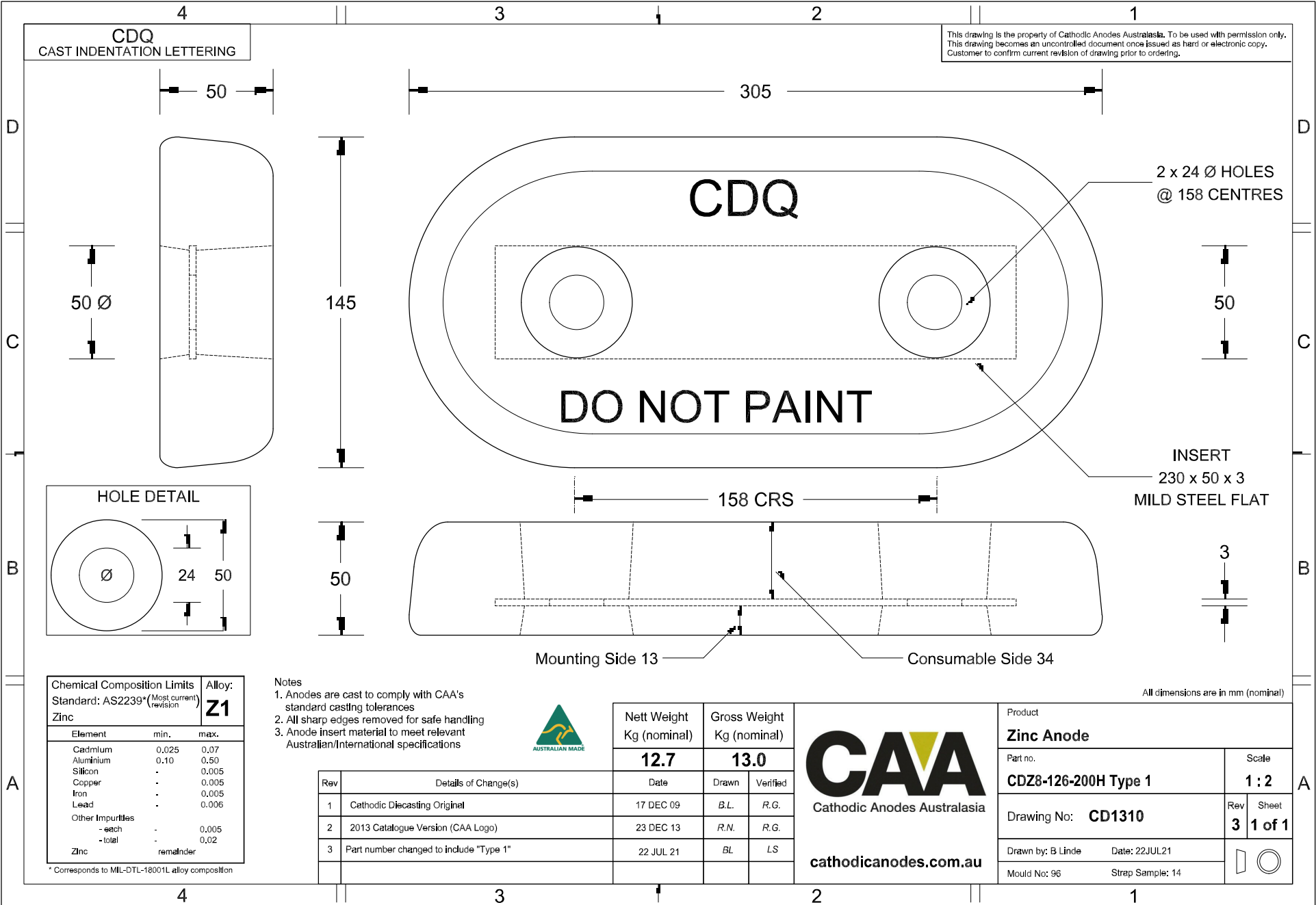


This drawing is the property of Cathodic Anodes Australasia. To be used with permission only. This drawing becomes an uncontrolled document once issued as hard or electronic copy. Customer to confirm current revision of drawing prior to ordering.



Chemical Composition Limits		Alloy:
Standard: AS2239* (Most current revision)		<b>Z1</b>
Zinc		
Element	min.	max.
Cadmium	0.025	0.07
Aluminium	0.10	0.50
Silicon	-	0.005
Copper	-	0.005
Iron	-	0.005
Lead	-	0.006
Other Impurities		
- each	-	0.005
- total	-	0.02
Zinc	remainder	

\* Corresponds to MIL-DTL-18001L alloy composition

- Notes
1. Anodes are cast to comply with CAA's standard casting tolerances
  2. All sharp edges removed for safe handling
  3. Anode insert material to meet relevant Australian/International specifications



Rev	Details of Change(s)	Date	Drawn	Verified
1	Cathodic Diecasting Original	17 DEC 09	B.L.	R.G.
2	2013 Catalogue Version (CAA Logo)	23 DEC 13	R.N.	R.G.
3	Part number changed to include "Type 1"	22 JUL 21	BL	LS

Nett Weight	Gross Weight
Kg (nominal)	Kg (nominal)
<b>12.7</b>	<b>13.0</b>

**CAA**  
Cathodic Anodes Australasia  
cathodicanodes.com.au

Product		<b>Zinc Anode</b>	
Part no.	<b>CDZ8-126-200H Type 1</b>	Scale	<b>1 : 2</b>
Drawing No:	<b>CD1310</b>	Rev	<b>3</b>
Sheet	<b>1 of 1</b>		
Drawn by: B Linde	Date: 22JUL21		
Mould No: 96	Strap Sample: 14		

All dimensions are in mm (nominal)