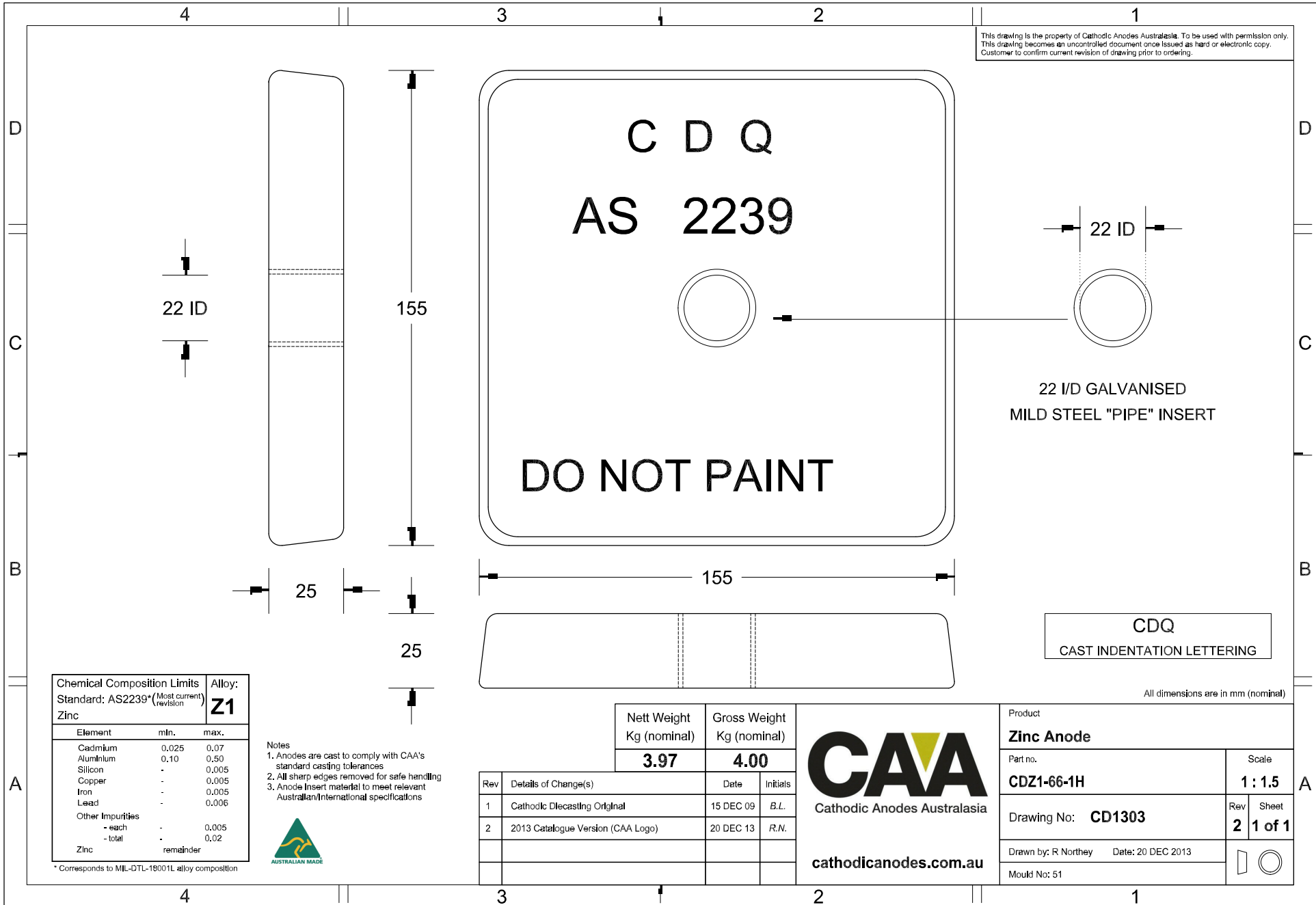


This drawing is the property of Cathodic Anodes Australasia. To be used with permission only.
 This drawing becomes an uncontrolled document once issued as hard or electronic copy.
 Customer to confirm current revision of drawing prior to ordering.



Chemical Composition Limits			Alloy: Z1
Element	min.	max.	
Standard: AS2239* (Most current revision)			
Zinc			
Cadmium	0.025	0.07	
Aluminium	0.10	0.50	
Silicon	-	0.005	
Copper	-	0.005	
Iron	-	0.005	
Lead	-	0.006	
Other Impurities			
- each	-	0.005	
- total	-	0.02	
Zinc		remainder	

- Notes
- Anodes are cast to comply with CAA's standard casting tolerances
 - All sharp edges removed for safe handling
 - Anode Insert material to meet relevant Australian/International specifications



* Corresponds to MIL-DTL-18001L alloy composition

Nett Weight Kg (nominal)	Gross Weight Kg (nominal)
3.97	4.00

Rev	Details of Change(s)	Date	Initials
1	Cathodic Diecasting Original	15 DEC 09	B.L.
2	2013 Catalogue Version (CAA Logo)	20 DEC 13	R.N.



Cathodic Anodes Australasia

cathodicanodes.com.au

Product Zinc Anode	
Part no. CDZ1-66-1H	Scale 1 : 1.5
Drawing No: CD1303	Rev Sheet 2 1 of 1
Drawn by: R Northey Date: 20 DEC 2013	
Mould No: 51	

All dimensions are in mm (nominal)

CDQ
CAST INDENTATION LETTERING