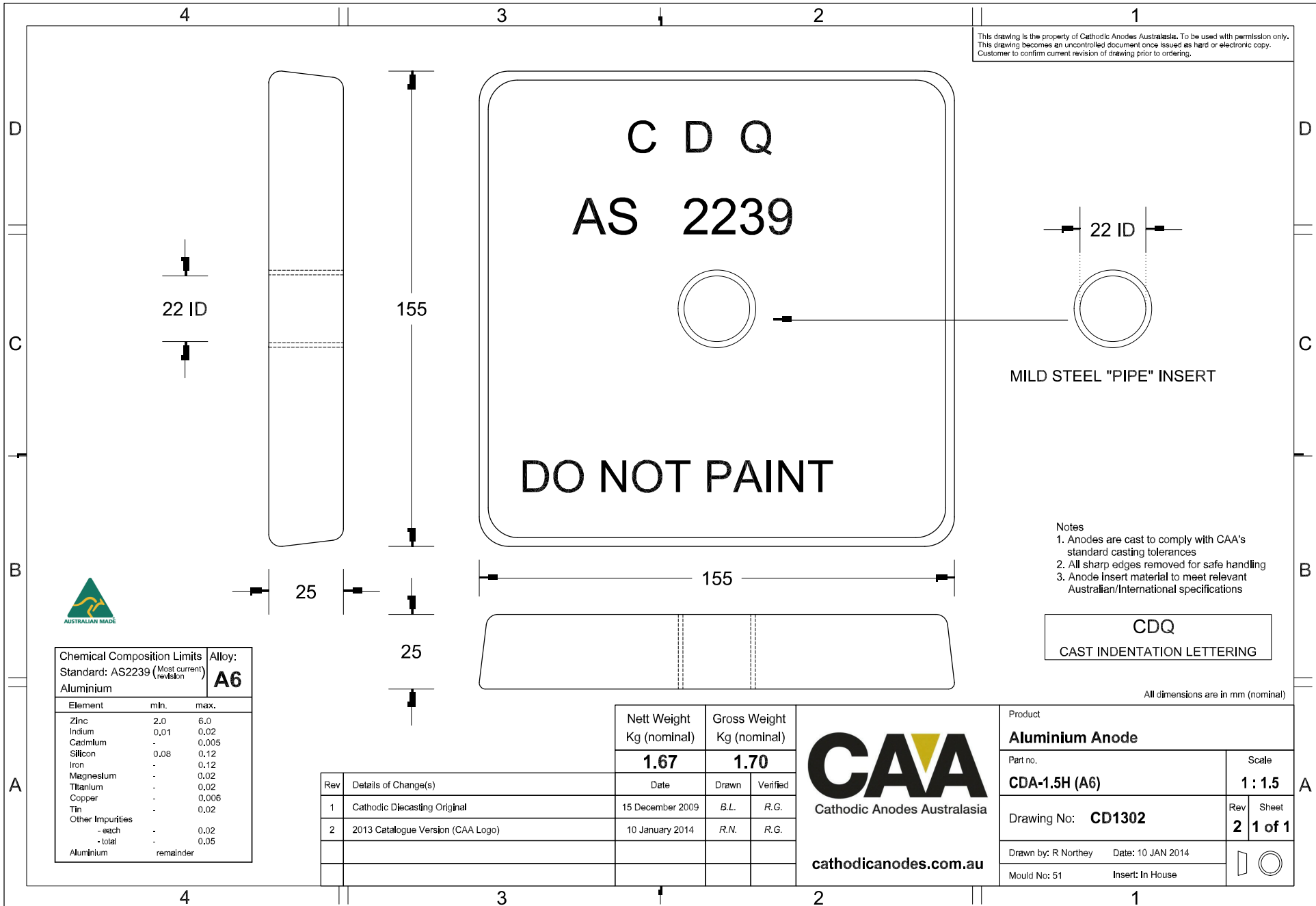
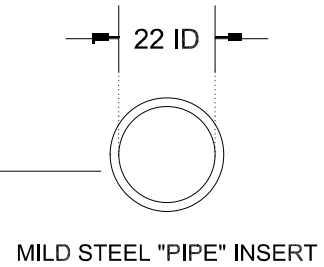


This drawing is the property of Cathodic Anodes Australasia. To be used with permission only. This drawing becomes an uncontrolled document once issued as hard or electronic copy. Customer to confirm current revision of drawing prior to ordering.



C D Q
AS 2239

DO NOT PAINT



- Notes
1. Anodes are cast to comply with CAA's standard casting tolerances
 2. All sharp edges removed for safe handling
 3. Anode insert material to meet relevant Australian/International specifications

CDQ
CAST INDENTATION LETTERING

All dimensions are in mm (nominal)



Chemical Composition Limits		Alloy:	
Standard: AS2239 (Most current revision)		A6	
Element	min.	max.	
Zinc	2.0	6.0	
Indium	0.01	0.02	
Cadmium	-	0.005	
Silicon	0.08	0.12	
Iron	-	0.12	
Magnesium	-	0.02	
Titanium	-	0.02	
Copper	-	0.006	
Tin	-	0.02	
Other Impurities			
- each	-	0.02	
- total	-	0.05	
Aluminium	remainder		

Rev	Details of Change(s)	Date	Drawn	Verified
1	Cathodic Diecasting Original	15 December 2009	B.L.	R.G.
2	2013 Catalogue Version (CAA Logo)	10 January 2014	R.N.	R.G.

Nett Weight	Gross Weight
Kg (nominal)	Kg (nominal)
1.67	1.70

CAA
Cathodic Anodes Australasia
cathodicanodes.com.au

Product		Aluminium Anode	
Part no.	CDA-1.5H (A6)	Scale	1 : 1.5
Drawing No:	CD1302	Rev	2
		Sheet	1 of 1
Drawn by:	R Northey	Date:	10 JAN 2014
Mould No:	51	Insert:	In House