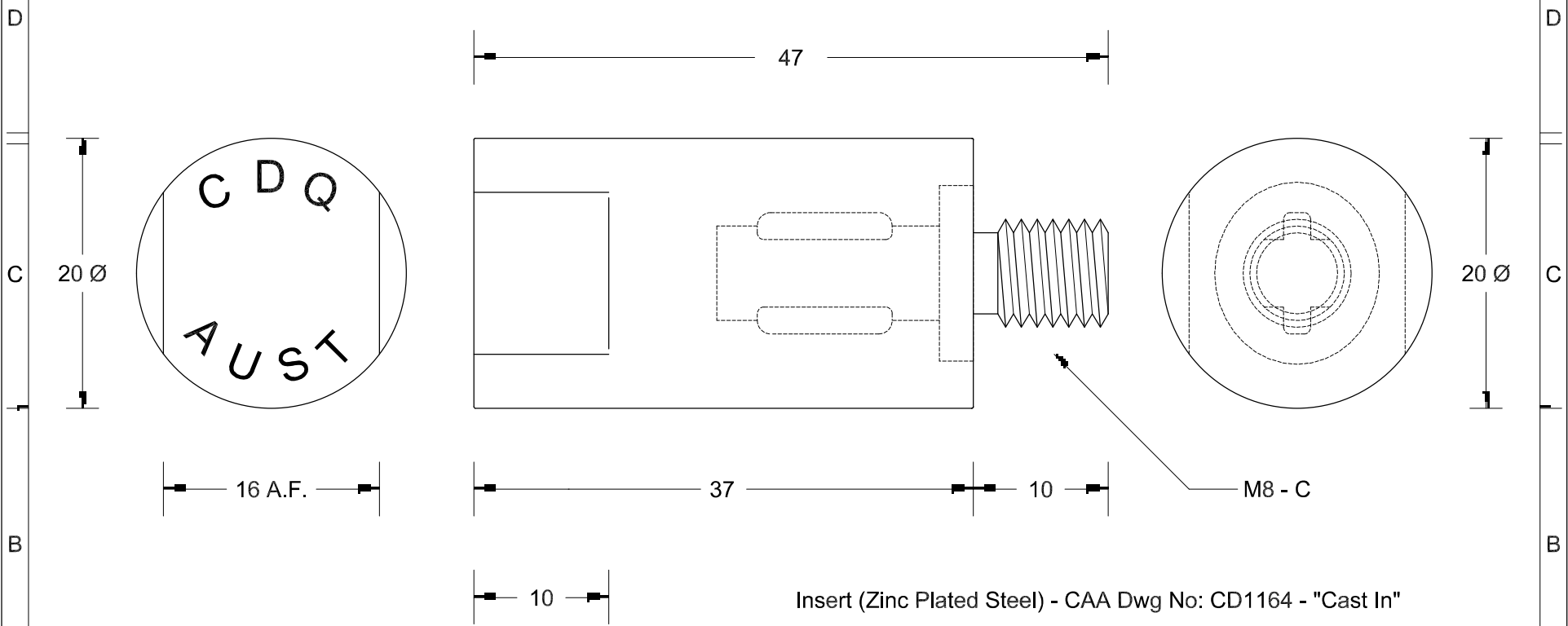


This drawing is the property of Cathodic Anodes Australasia. To be used with permission only.  
 This drawing becomes an uncontrolled document once issued as hard or electronic copy.  
 Customer to confirm current revision of drawing prior to ordering.

Pressure Die Cast Component - "No Sharp Edges"



Insert (Zinc Plated Steel) - CAA Dwg No: CD1164 - "Cast In"

All dimensions are in mm (nominal)

Chemical Composition Limits			Alloy: <b>Z1</b>
Standard: AS2239* (Most current revision)			
Zinc			
Element	min.	max.	
Cadmium	0.025	0.07	
Aluminium	0.10	0.50	
Silicon	-	0.005	
Copper	-	0.005	
Iron	-	0.005	
Lead	-	0.006	
Other Impurities			
- each	-	0.005	
- total	-	0.02	
Zinc	remainder		

Notes

1. Anodes are cast to comply with CAA's standard casting tolerances
2. All sharp edges removed for safe handling
3. Anode insert material to meet relevant Australian/International specifications



\* Corresponds to MIL-DTL-18001L alloy composition

Nett Weight Kg (nominal)	Gross Weight Kg (nominal)
<b>0.080</b>	<b>0.090</b>

Rev	Details of Change(s)	Date	Initials
1	Cathodic Diecasting Original	02 OCT 09	B.L.
2	2013 Catalogue Version (CAA Logo)	27 MAR 15	R.N.
3	Insert Changed to Dwg No: CD1164	21 FEB 20	R.N.

**CAA**  
 Cathodic Anodes Australasia  
[cathodicanodes.com.au](http://cathodicanodes.com.au)

Product <b>Zinc Anode</b>		Scale <b>2.5 : 1</b>	
Part no. <b>CDZ9-144</b>	Drawing No: <b>CD1284</b>		Rev Sheet <b>3 1 of 1</b>
Drawn by: R Northey	Date: 21 FEB 2020	Mould No: N/A Tooling: N/A	

