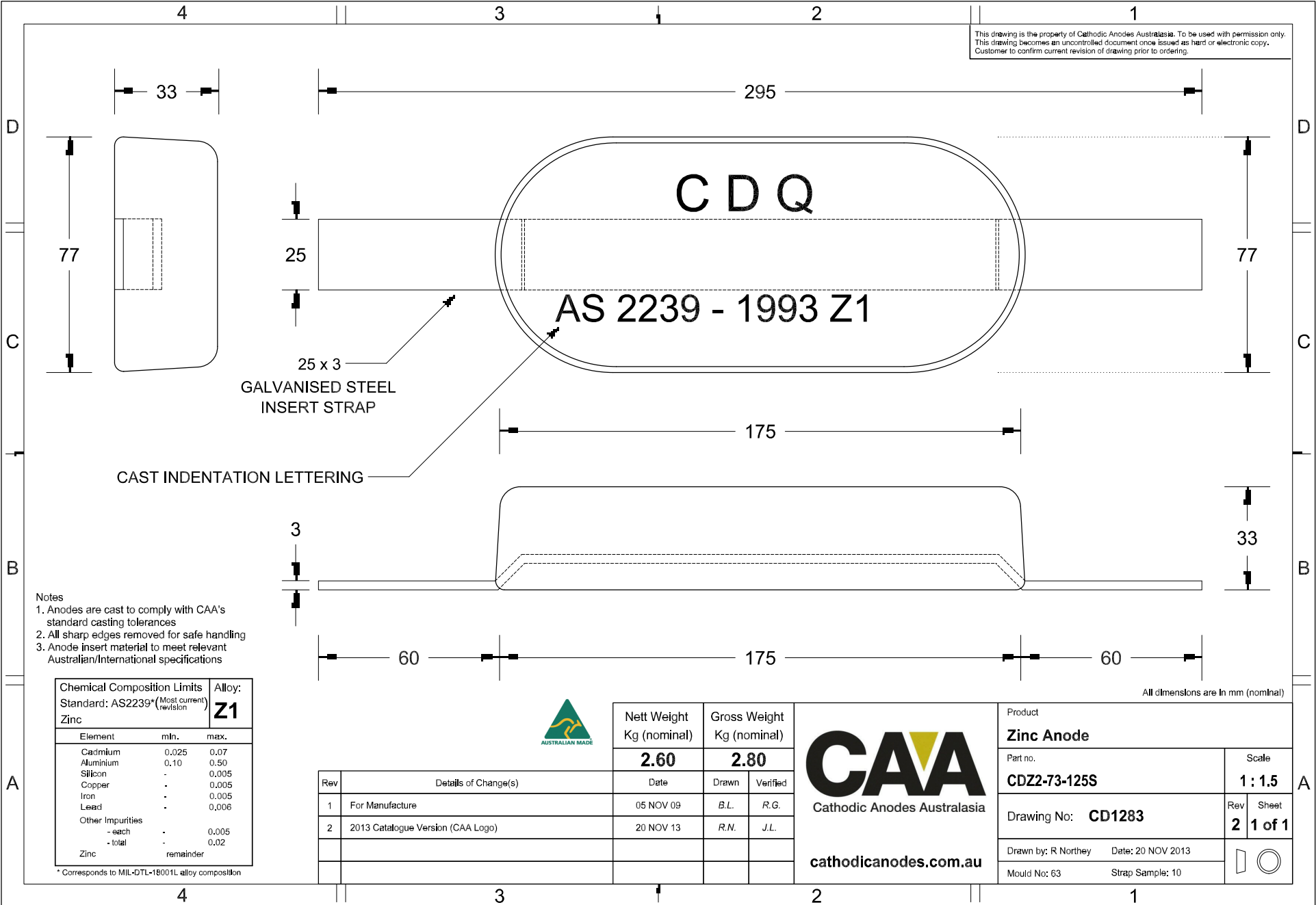


This drawing is the property of Cathodic Anodes Australasia. To be used with permission only. This drawing becomes an uncontrolled document once issued as hard or electronic copy. Customer to confirm current revision of drawing prior to ordering.



- Notes
1. Anodes are cast to comply with CAA's standard casting tolerances
  2. All sharp edges removed for safe handling
  3. Anode insert material to meet relevant Australian/International specifications

Chemical Composition Limits		
Standard: AS2239* (Most current revision)		
Element	min.	max.
Zinc		<b>Z1</b>
Cadmium	0.025	0.07
Aluminium	0.10	0.50
Silicon	-	0.005
Copper	-	0.005
Iron	-	0.005
Lead	-	0.006
Other Impurities		
- each	-	0.005
- total	-	0.02
Zinc	remainder	

\* Corresponds to MIL-DTL-18001L alloy composition



Rev	Details of Change(s)	Date	Nett Weight		Gross Weight	
			Kg (nominal)	Kg (nominal)	Kg (nominal)	Kg (nominal)
1	For Manufacture	05 NOV 09	<b>2.60</b>	<b>2.80</b>	B.L.	R.G.
2	2013 Catalogue Version (CAA Logo)	20 NOV 13			R.N.	J.L.



Product		<b>Zinc Anode</b>	
Part no.	<b>CD22-73-125S</b>	Scale	<b>1 : 1.5</b>
Drawing No:	<b>CD1283</b>	Rev	<b>2</b>
		Sheet	<b>1 of 1</b>
Drawn by: R Northey	Date: 20 NOV 2013		
Mould No: 63	Strap Sample: 10		

All dimensions are in mm (nominal)