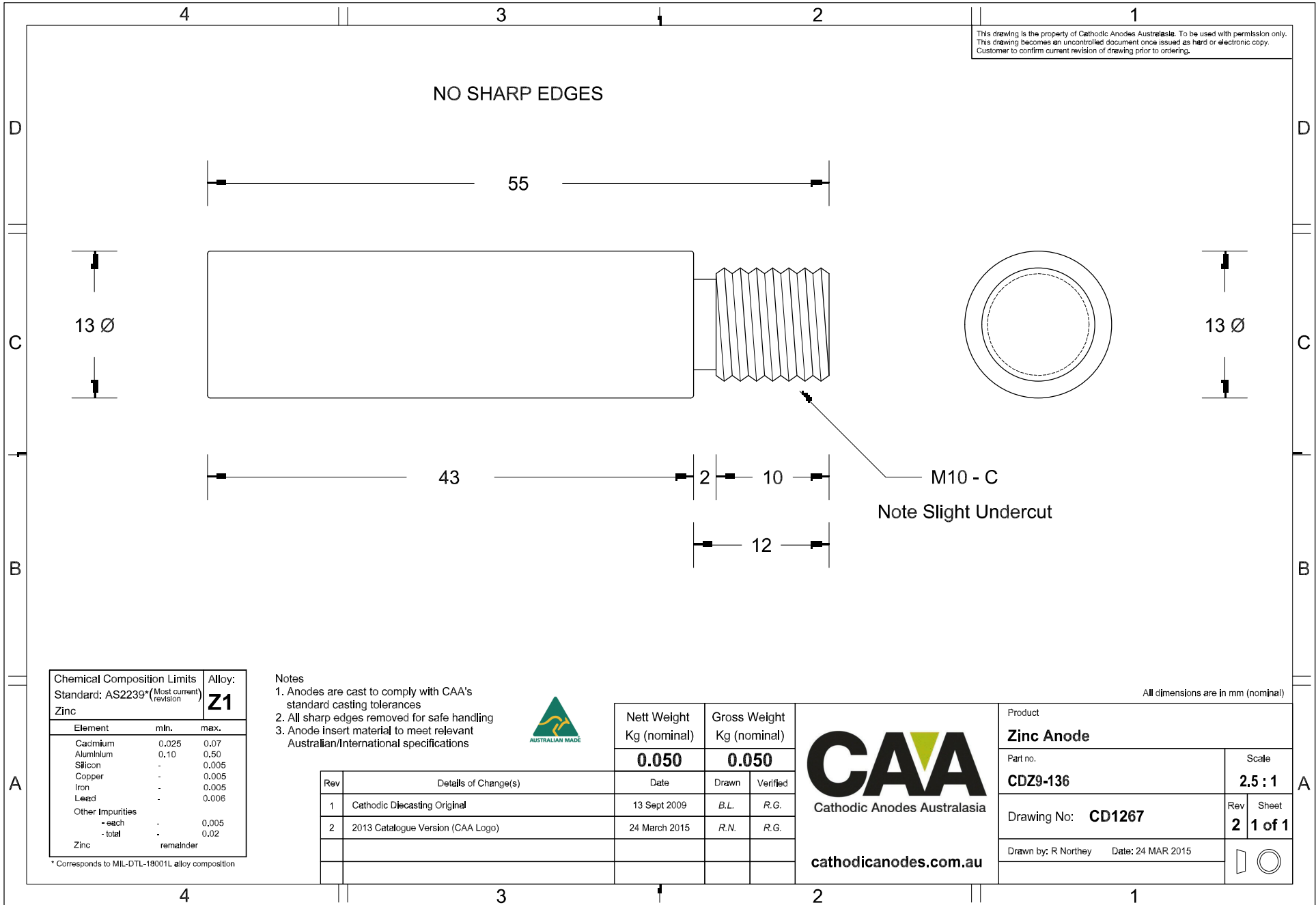


This drawing is the property of Cathodic Anodes Australasia. To be used with permission only.  
 This drawing becomes an uncontrolled document once issued as hard or electronic copy.  
 Customer to confirm current revision of drawing prior to ordering.

NO SHARP EDGES



| Chemical Composition Limits                         |           | Alloy:    |
|---|-----------|-----------|
| Standard: AS2239 <sup>(Most current revision)</sup> |           | <b>Z1</b> |
| Element   | min.      | max.      |
| Cadmium   | 0.025     | 0.07      |
| Aluminium   | 0.10      | 0.50      |
| Silicon   | -         | 0.005     |
| Copper  | -         | 0.005     |
| Iron  | -         | 0.005     |
| Lead  | -         | 0.006     |
| Other Impurities                                    |           |           |
| - each  | -         | 0.005     |
| - total   | -         | 0.02      |
| Zinc  | remainder |           |

\* Corresponds to MIL-DTL-18001L alloy composition

Notes

1. Anodes are cast to comply with CAA's standard casting tolerances
2. All sharp edges removed for safe handling
3. Anode insert material to meet relevant Australian/International specifications



| Rev | Details of Change(s)              | Date          | Drawn | Verified |
|-----|-----------------------------------|---------------|-------|----------|
| 1   | Cathodic Diecasting Original      | 13 Sept 2009  | B.L.  | R.G.     |
| 2   | 2013 Catalogue Version (CAA Logo) | 24 March 2015 | R.N.  | R.G.     |
|     |                                   |               |       |          |
|     |                                   |               |       |          |

**CAA**  
 Cathodic Anodes Australasia  
 cathodicanodes.com.au

All dimensions are in mm (nominal)

|             |                 |                   |                |
|-------------|-----------------|-------------------|----------------|
| Product     |                 | <b>Zinc Anode</b> |                |
| Part no.    | <b>CDZ9-136</b> | Scale             | <b>2.5 : 1</b> |
| Drawing No: | <b>CD1267</b>   | Rev               | Sheet          |
|             |                 | <b>2</b>          | <b>1 of 1</b>  |
| Drawn by:   | R Northey       | Date:             | 24 MAR 2015    |

