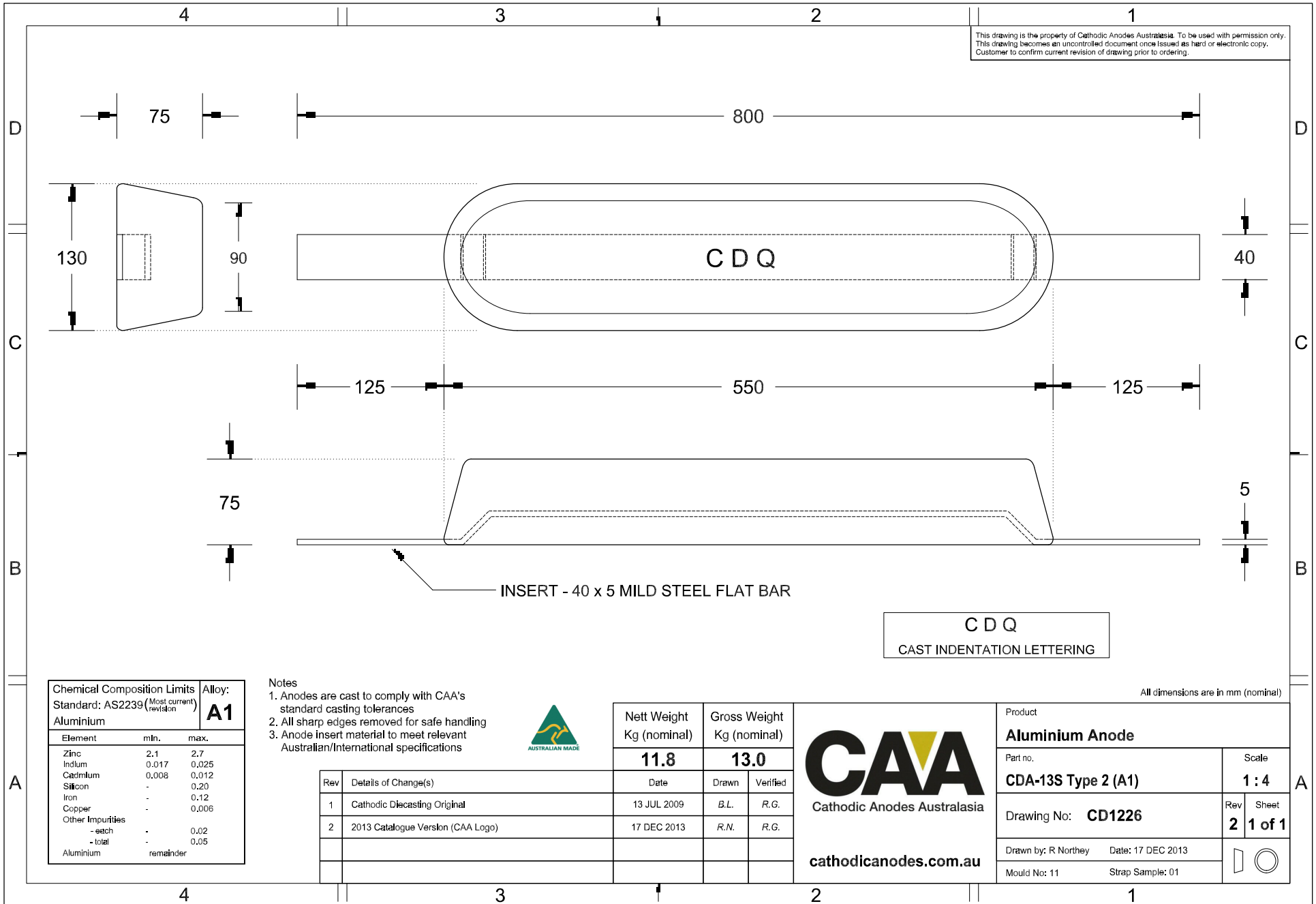


This drawing is the property of Cathodic Anodes Australasia. To be used with permission only.
 This drawing becomes an uncontrolled document once issued as hard or electronic copy.
 Customer to confirm current revision of drawing prior to ordering.



CDQ
 CAST INDENTATION LETTERING

All dimensions are in mm (nominal)

Chemical Composition Limits			Alloy: A1
Standard: AS2239 (Most current revision)			
Aluminium			
Element	min.	max.	
Zinc	2.1	2.7	
Indium	0.017	0.025	
Cadmium	0.008	0.012	
Silicon	-	0.20	
Iron	-	0.12	
Copper	-	0.006	
Other Impurities			
- each	-	0.02	
- total	-	0.05	
Aluminium		remainder	

- Notes
1. Anodes are cast to comply with CAA's standard casting tolerances
 2. All sharp edges removed for safe handling
 3. Anode insert material to meet relevant Australian/International specifications



Rev	Details of Change(s)	Date	Drawn	Verified
1	Cathodic Diecasting Original	13 JUL 2009	B.L.	R.G.
2	2013 Catalogue Version (CAA Logo)	17 DEC 2013	R.N.	R.G.

Nett Weight Kg (nominal)	Gross Weight Kg (nominal)
11.8	13.0

CAA
 Cathodic Anodes Australasia
 cathodicanodes.com.au

Product Aluminium Anode	
Part no. CDA-13S Type 2 (A1)	Scale 1 : 4
Drawing No: CD1226	Rev 2 Sheet 1 of 1
Drawn by: R Northey Date: 17 DEC 2013	
Mould No: 11	Strap Sample: 01