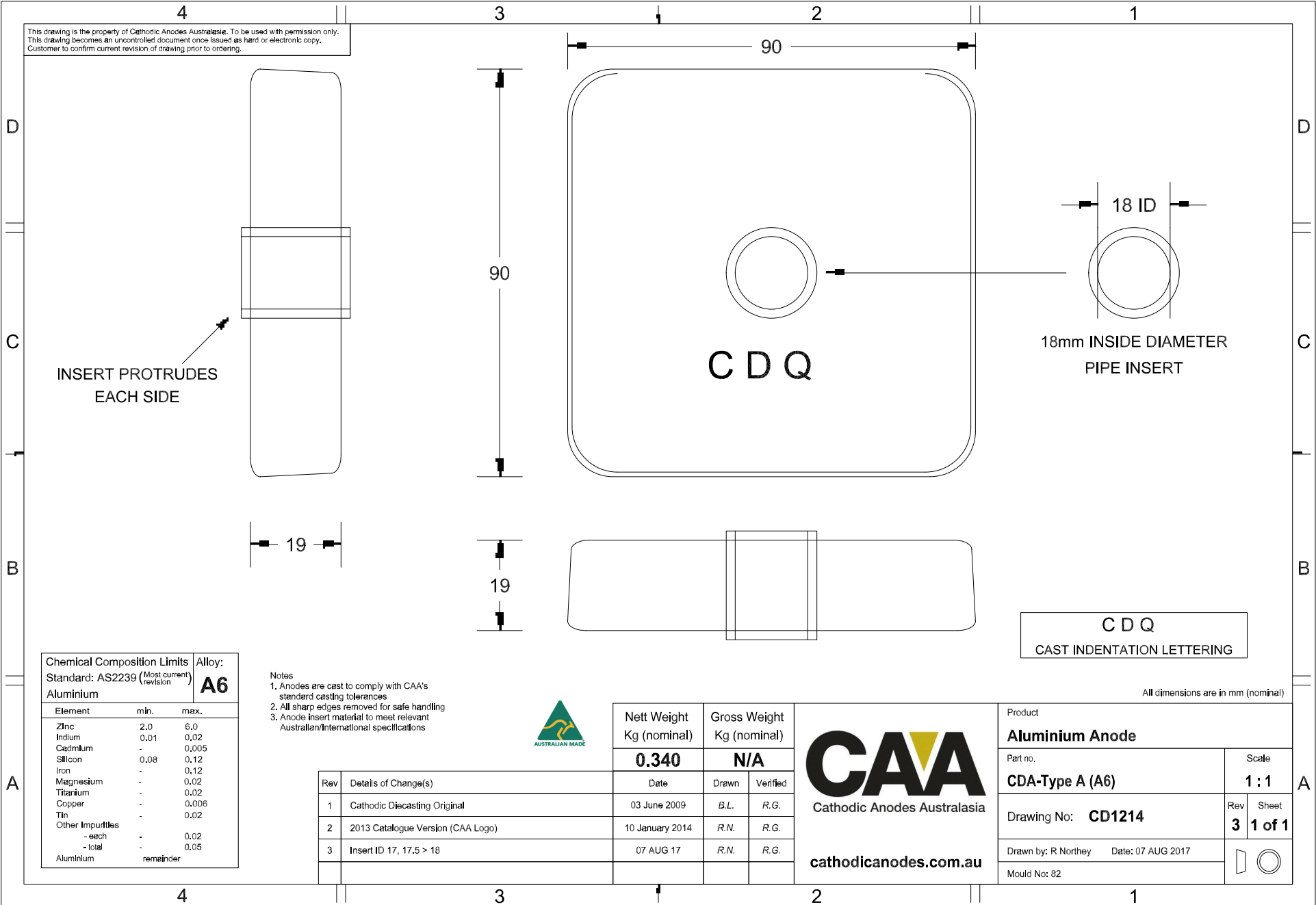


This drawing is the property of Cathodic Anodes Australasia. To be used with permission only.
 This drawing becomes an uncontrolled document once issued as hard or electronic copy.
 Customer to confirm current revision of drawing prior to ordering.



INSERT PROTRUDES
EACH SIDE

C D Q

18mm INSIDE DIAMETER
PIPE INSERT

C D Q
CAST INDENTATION LETTERING

All dimensions are in mm (nominal)

Chemical Composition Limits			Alloy: A6
Element	min.	max.	
Zinc	2.0	6.0	
Indium	0.01	0.02	
Cadmium	-	0.005	
Silicon	0.08	0.12	
Iron	-	0.12	
Magnesium	-	0.02	
Titanium	-	0.02	
Copper	-	0.006	
Tin	-	0.02	
Other Impurities	-	-	
- each	-	0.02	
- total	-	0.05	
Aluminium	remainder		

- Notes
- Anodes are cast to comply with CAA's standard casting tolerances
 - All sharp edges removed for safe handling
 - Anode insert material to meet relevant Australian/International specifications



Rev	Details of Change(s)	Date	Nett Weight		Gross Weight	
			Kg (nominal)		Kg (nominal)	
			0.340		N/A	
1	Cathodic Diecasting Original	03 June 2009		B.L.	R.G.	
2	2013 Catalogue Version (CAA Logo)	10 January 2014		R.N.	R.G.	
3	Insert ID 17, 17.5 > 18	07 AUG 17		R.N.	R.G.	

CAA
Cathodic Anodes Australasia
cathodicanodes.com.au

Product Aluminium Anode	
Part no. CDA-Type A (A6)	Scale 1 : 1
Drawing No: CD1214	Rev Sheet 3 1 of 1
Drawn by: R Northey Date: 07 AUG 2017	
Mould No: 82	