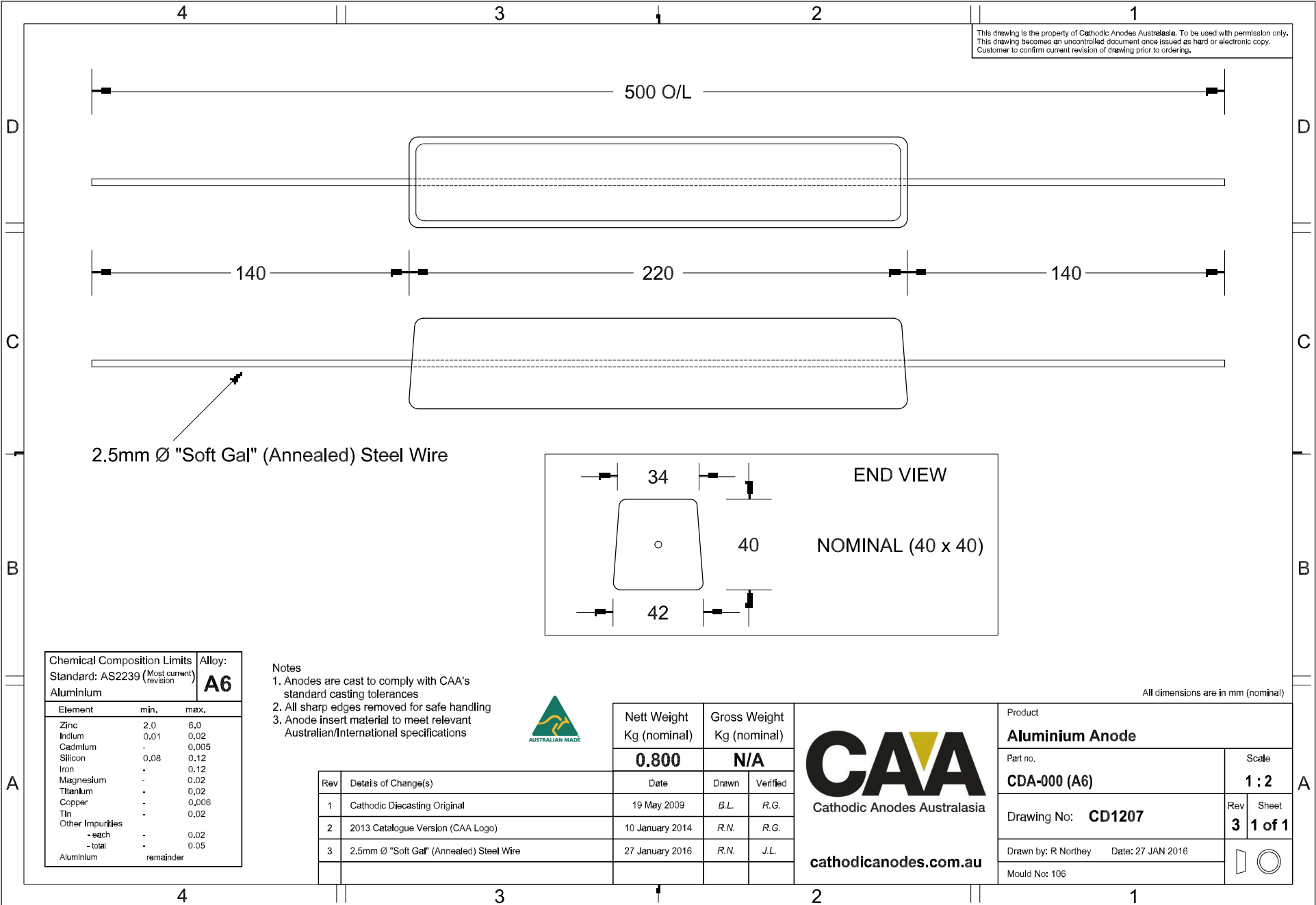
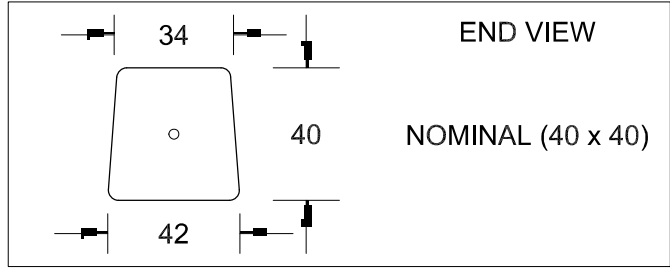


This drawing is the property of Cathodic Anodes Australasia. To be used with permission only.
 This drawing becomes an uncontrolled document once issued as hard or electronic copy.
 Customer to confirm current revision of drawing prior to ordering.



2.5mm Ø "Soft Gal" (Annealed) Steel Wire



Chemical Composition Limits			Alloy:
Element	min.	max.	A6
Standard: AS2239 (Most current Revision)			
Aluminium			
Zinc	2.0	6.0	
Indium	0.01	0.02	
Cadmium	-	0.005	
Silicon	0.08	0.12	
Iron	-	0.12	
Magnesium	-	0.02	
Titanium	-	0.02	
Copper	-	0.006	
Tin	-	0.02	
Other Impurities	-	-	
- each	-	0.02	
- total	-	0.05	
Aluminium	remainder		

- Notes
1. Anodes are cast to comply with CAA's standard casting tolerances
 2. All sharp edges removed for safe handling
 3. Anode insert material to meet relevant Australian/International specifications



Rev	Details of Change(s)	Date	Drawn	Verified
1	Cathodic Diecasting Original	19 May 2009	B.L.	R.G.
2	2013 Catalogue Version (CAA Logo)	10 January 2014	R.N.	R.G.
3	2.5mm Ø "Soft Gal" (Annealed) Steel Wire	27 January 2016	R.N.	J.L.

Nett Weight Kg (nominal)	Gross Weight Kg (nominal)	
0.800	N/A	
Date	Drawn	Verified

CAA
 Cathodic Anodes Australasia
 cathodicanodes.com.au

All dimensions are in mm (nominal)

Product Aluminium Anode	
Part no. CDA-000 (A6)	Scale 1 : 2
Drawing No: CD1207	Rev Sheet 3 1 of 1
Drawn by: R Northey Date: 27 JAN 2016	
Mould No: 106	