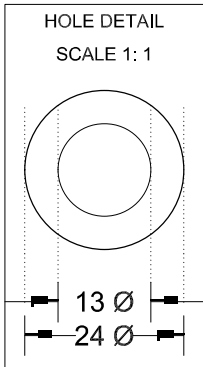
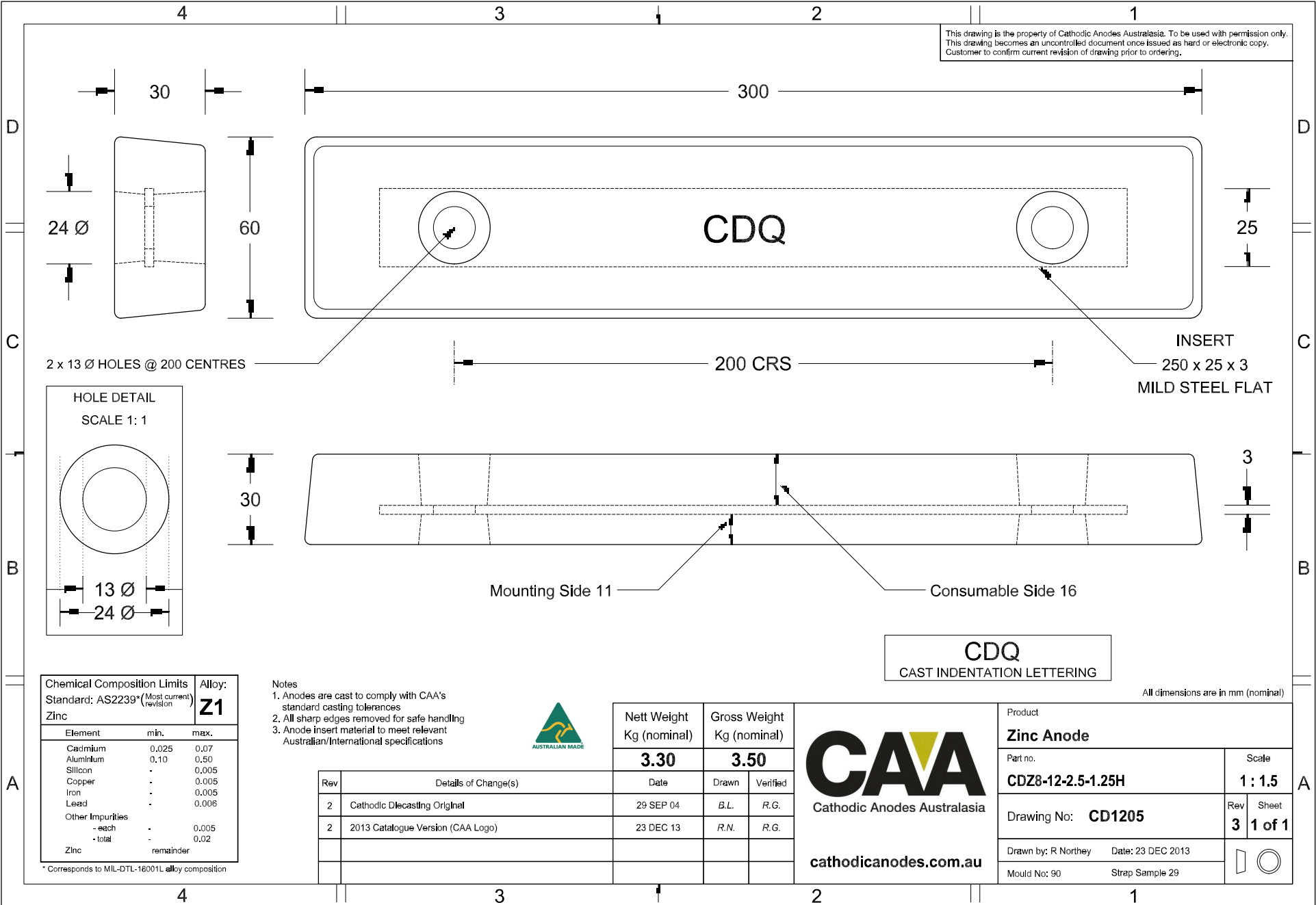


This drawing is the property of Cathodic Anodes Australasia. To be used with permission only. This drawing becomes an uncontrolled document once issued as hard or electronic copy. Customer to confirm current revision of drawing prior to ordering.



Chemical Composition Limits			Alloy:
Standard: AS2239* (Most current revision)			Z1
Element	min.	max.	
Cadmium	0.025	0.07	
Aluminium	0.10	0.50	
Silicon	-	0.005	
Copper	-	0.005	
Iron	-	0.005	
Lead	-	0.006	
Other Impurities			
- each	-	0.005	
- total	-	0.02	
Zinc	remainder		

* Corresponds to MIL-DTL-18001L alloy composition

- Notes
1. Anodes are cast to comply with CAA's standard casting tolerances
 2. All sharp edges removed for safe handling
 3. Anode insert material to meet relevant Australian/International specifications



Rev	Details of Change(s)	Date	Drawn	Verified
2	Cathodic Diecasting Original	29 SEP 04	B.L.	R.G.
2	2013 Catalogue Version (CAA Logo)	23 DEC 13	R.N.	R.G.

Nett Weight Kg (nominal)	Gross Weight Kg (nominal)
3.30	3.50



CDQ
CAST INDENTATION LETTERING

All dimensions are in mm (nominal)

Product Zinc Anode	
Part no. CDZ8-12-2.5-1.25H	Scale 1 : 1.5
Drawing No: CD1205	Rev Sheet 3 1 of 1
Drawn by: R Northey Date: 23 DEC 2013	
Mould No: 90	Strap Sample 29