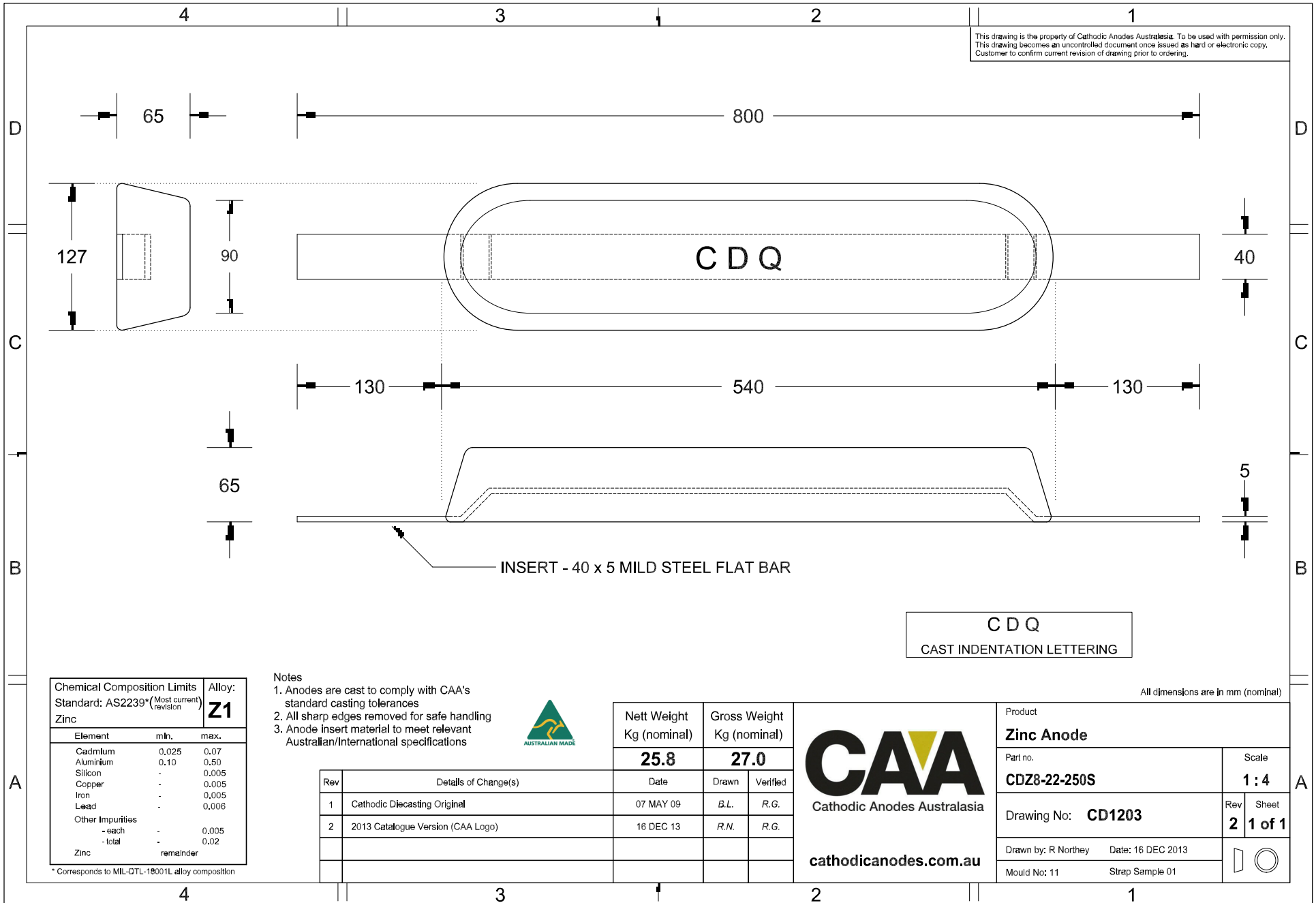


This drawing is the property of Cathodic Anodes Australasia. To be used with permission only.
 This drawing becomes an uncontrolled document once issued as hard or electronic copy.
 Customer to confirm current revision of drawing prior to ordering.



| Chemical Composition Limits | | Alloy: Z1 |
|---|-------|---------------------|
| Standard: AS2239* (Most current revision) | | |
| Element | min. | max. |
| Cadmium | 0.025 | 0.07 |
| Aluminium | 0.10 | 0.50 |
| Silicon | - | 0.005 |
| Copper | - | 0.005 |
| Iron | - | 0.005 |
| Lead | - | 0.006 |
| Other Impurities | | |
| - each | - | 0.005 |
| - total | - | 0.02 |
| Zinc | | remainder |

* Corresponds to MIL-DTL-18001L alloy composition

Notes

- Anodes are cast to comply with CAA's standard casting tolerances
- All sharp edges removed for safe handling
- Anode insert material to meet relevant Australian/International specifications



| Rev | Details of Change(s) | Date | Drawn | Verified |
|-----|-----------------------------------|-----------|-------|----------|
| 1 | Cathodic Diecasting Original | 07 MAY 09 | B.L. | R.G. |
| 2 | 2013 Catalogue Version (CAA Logo) | 16 DEC 13 | R.N. | R.G. |

| Nett Weight Kg (nominal) | Gross Weight Kg (nominal) |
|-----------------------------|------------------------------|
| 25.8 | 27.0 |

CAA
 Cathodic Anodes Australasia
 cathodicanodes.com.au

| | |
|---------------------------------------|------------------------------|
| Product Zinc Anode | |
| Part no. CDZ8-22-250S | Scale 1 : 4 |
| Drawing No: CD1203 | Rev Sheet 2 1 of 1 |
| Drawn by: R Northey Date: 16 DEC 2013 | |
| Mould No: 11 Strap Sample 01 | |

All dimensions are in mm (nominal)