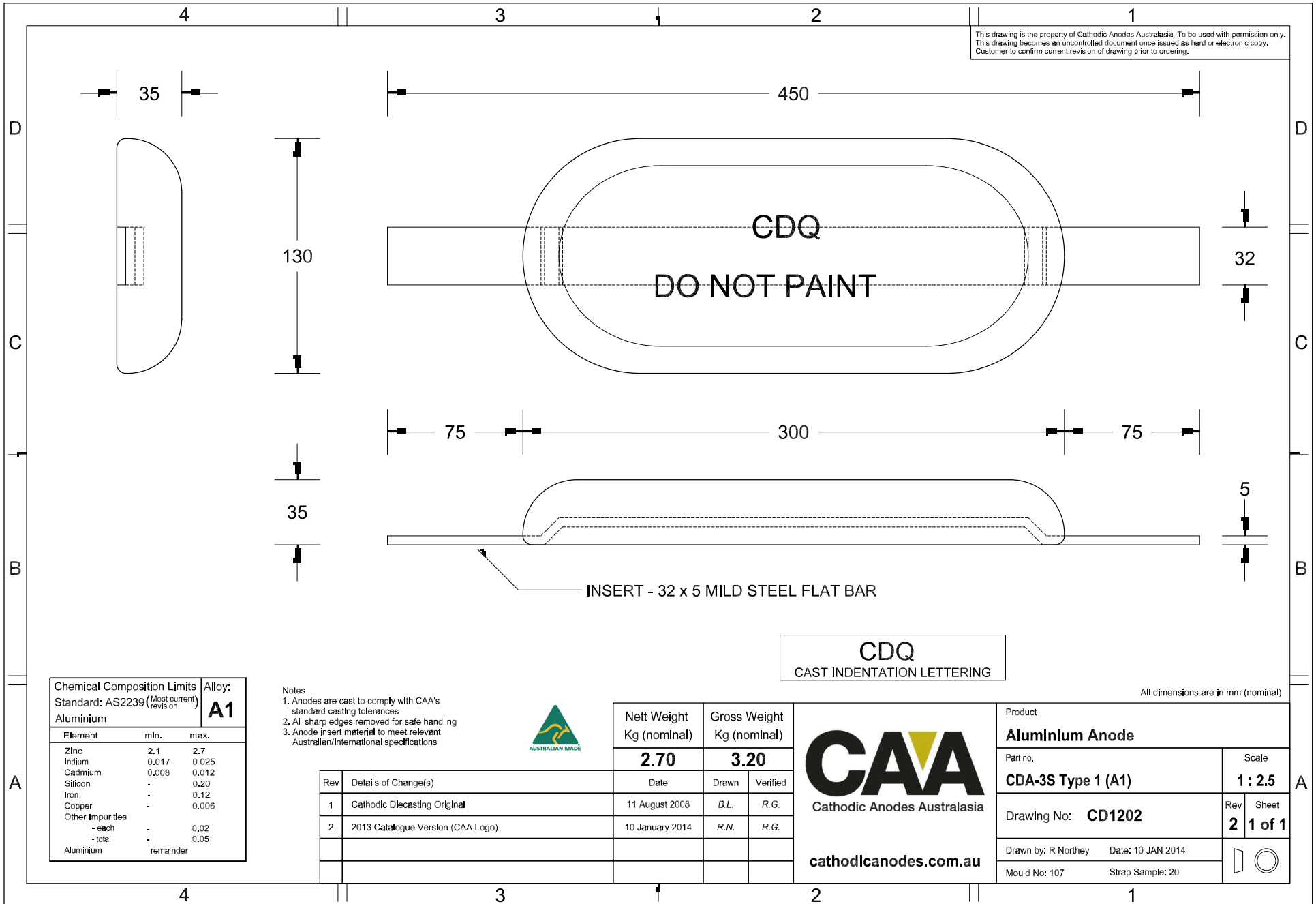


This drawing is the property of Cathodic Anodes Australasia. To be used with permission only.  
 This drawing becomes an uncontrolled document once issued as hard or electronic copy.  
 Customer to confirm current revision of drawing prior to ordering.



**CDQ**  
 CAST INDENTATION LETTERING

All dimensions are in mm (nominal)

Chemical Composition Limits			Alloy: <b>A1</b>
Standard: AS2239 (Most current revision)			
Aluminium			
Element	min.	max.	
Zinc	2.1	2.7	
Indium	0.017	0.025	
Cadmium	0.008	0.012	
Silicon	-	0.20	
Iron	-	0.12	
Copper	-	0.006	
Other Impurities			
- each	-	0.02	
- total	-	0.05	
Aluminium	remainder		

- Notes
1. Anodes are cast to comply with CAA's standard casting tolerances
  2. All sharp edges removed for safe handling
  3. Anode insert material to meet relevant Australian/International specifications



Rev	Details of Change(s)	Date	Nett Weight		Gross Weight	
			Kg (nominal)		Kg (nominal)	
1	Cathodic Diecasting Original	11 August 2008	<b>2.70</b>		<b>3.20</b>	
2	2013 Catalogue Version (CAA Logo)	10 January 2014				

**CAA**  
 Cathodic Anodes Australasia  
 cathodicanodes.com.au

Product <b>Aluminium Anode</b>	
Part no. <b>CDA-3S Type 1 (A1)</b>	Scale <b>1 : 2.5</b>
Drawing No: <b>CD1202</b>	Rev Sheet <b>2 1 of 1</b>
Drawn by: R Northey Date: 10 JAN 2014	
Mould No: 107 Strap Sample: 20	