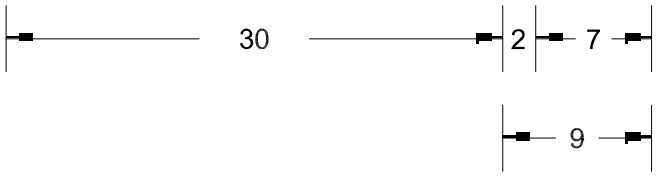
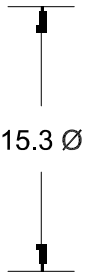
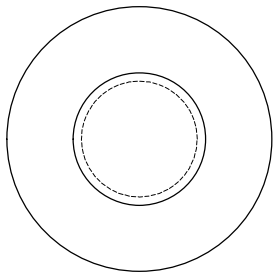
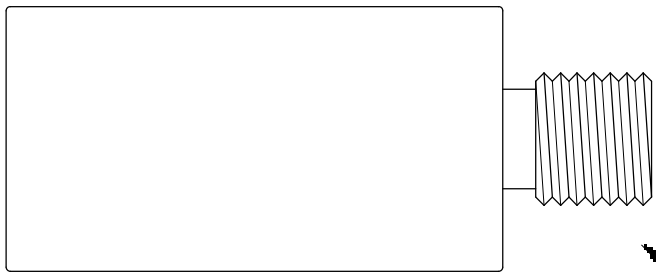
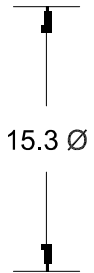


This drawing is the property of Cathodic Anodes Australasia. To be used with permission only. This drawing becomes an uncontrolled document once issued as hard or electronic copy. Customer to confirm current revision of drawing prior to ordering.

NO SHARP EDGES



M8 - C

Note Slight Undercut

Note: 15.3 Ø is Machined Down from 16 Ø Bar Stock

All dimensions are in mm (nominal)

Chemical Composition Limits		Alloy:
Standard: AS2239* (Most current revision)		Z1
Element	min.	max.
Zinc		
Cadmium	0.025	0.07
Aluminium	0.10	0.50
Silicon	-	0.005
Copper	-	0.005
Iron	-	0.005
Lead	-	0.008
Other Impurities		
- each	-	0.005
- total	-	0.02
Zinc	remainder	

* Corresponds to MIL-DTL-18001L alloy composition

- Notes
- Anodes are cast to comply with CAA's standard casting tolerances
 - All sharp edges removed for safe handling
 - Anode insert material to meet relevant Australian/International specifications



Rev	Details of Change(s)	Date	Drawn	Verified
1	Cathodic Diecasting Original	07 May 2009	B.L.	R.G.
2	Anode Diameter Revised	16 August 2010	B.L.	R.G.
3	2013 Catalogue Version (CAA Logo)	23 March 2015	R.N.	R.G.
4	O/L 40 reduced to 39 mm, Thread Length reduced 1 mm	20 Sept 2018	R.N.	R.G.

Nett Weight Kg (nominal)	Gross Weight Kg (nominal)
0.042	0.042

CAA
Cathodic Anodes Australasia
cathodicanodes.com.au

Product		Zinc Anode	
Part no.	CDZ9-129	Scale	2.5 : 1
Drawing No:	CD1201	Rev	4
Sheet	1 of 1	Sheet	1 of 1
Drawn by:	R Northey	Date:	20 SEP 2018

