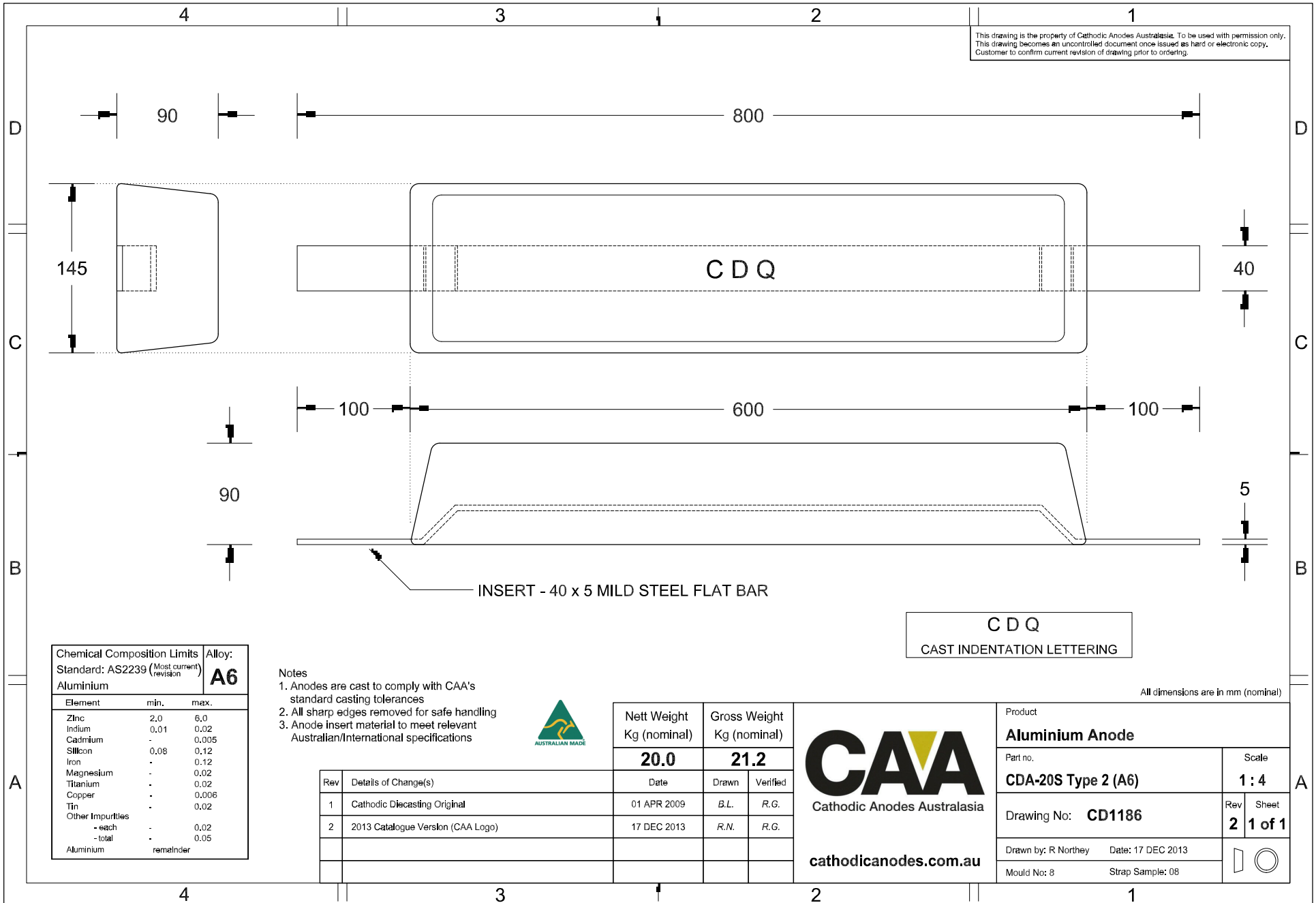


This drawing is the property of Cathodic Anodes Australasia. To be used with permission only.
 This drawing becomes an uncontrolled document once issued as hard or electronic copy.
 Customer to confirm current revision of drawing prior to ordering.




Chemical Composition Limits		Alloy:
Element	min.	max.
Standard: AS2239 (Most current revision)		
Aluminium		A6
Zinc	2.0	6.0
Indium	0.01	0.02
Cadmium	-	0.005
Silicon	0.08	0.12
Iron	-	0.12
Magnesium	-	0.02
Titanium	-	0.02
Copper	-	0.006
Tin	-	0.02
Other Impurities	-	-
- each	-	0.02
- total	-	0.05
Aluminium	remainder	

- Notes
1. Anodes are cast to comply with CAA's standard casting tolerances
 2. All sharp edges removed for safe handling
 3. Anode insert material to meet relevant Australian/International specifications



Rev	Details of Change(s)	Date	Drawn	Verified
1	Cathodic Diecasting Original	01 APR 2009	B.L.	R.G.
2	2013 Catalogue Version (CAA Logo)	17 DEC 2013	R.N.	R.G.


Cathodic Anodes Australasia
cathodicanodes.com.au

Product		Aluminium Anode	
Part no.	CDA-20S Type 2 (A6)	Scale	1 : 4
Drawing No:	CD1186	Rev	2
Drawn by: R Northey	Date: 17 DEC 2013	Sheet	1 of 1
Mould No: 8	Strap Sample: 08		

All dimensions are in mm (nominal)