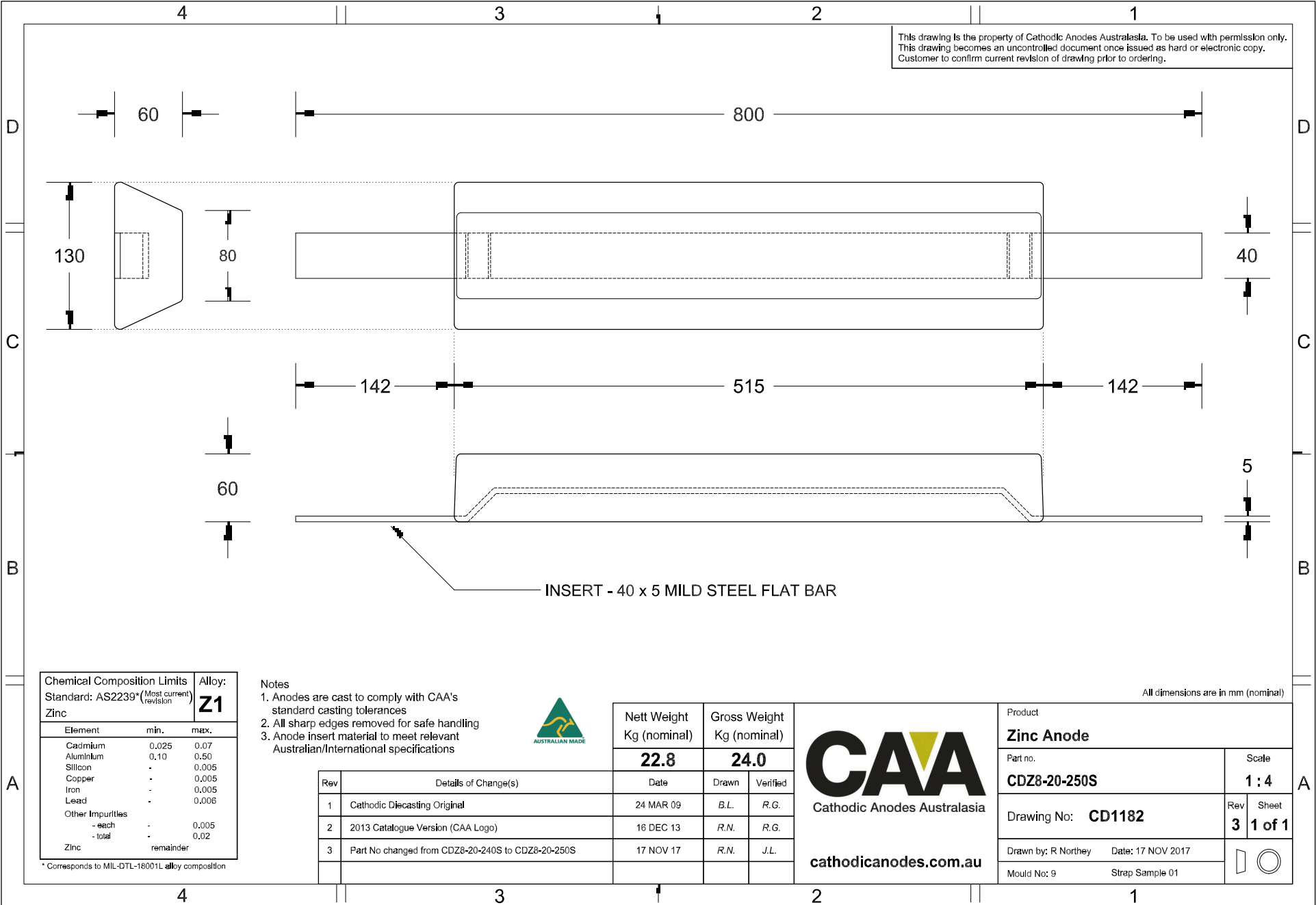


This drawing is the property of Cathodic Anodes Australasia. To be used with permission only. This drawing becomes an uncontrolled document once issued as hard or electronic copy. Customer to confirm current revision of drawing prior to ordering.



INSERT - 40 x 5 MILD STEEL FLAT BAR

All dimensions are in mm (nominal)

Chemical Composition Limits		Alloy:
Standard: AS2239* (Most current revision)		Z1
Element	min.	max.
Cadmium	0.025	0.07
Aluminium	0.10	0.50
Silicon	-	0.005
Copper	-	0.005
Iron	-	0.005
Lead	-	0.006
Other Impurities	-	-
- each	-	0.005
- total	-	0.02
Zinc	remainder	

* Corresponds to MIL-DTL-18001L alloy composition

- Notes
1. Anodes are cast to comply with CAA's standard casting tolerances
 2. All sharp edges removed for safe handling
 3. Anode insert material to meet relevant Australian/International specifications



Rev	Details of Change(s)	Date	Drawn	Verified
1	Cathodic Diecasting Original	24 MAR 09	B.L.	R.G.
2	2013 Catalogue Version (CAA Logo)	16 DEC 13	R.N.	R.G.
3	Part No changed from CDZ8-20-240S to CDZ8-20-250S	17 NOV 17	R.N.	J.L.

Nett Weight Kg (nominal)	Gross Weight Kg (nominal)
22.8	24.0

CAA
Cathodic Anodes Australasia
cathodicanodes.com.au

Product Zinc Anode	
Part no. CDZ8-20-250S	Scale 1 : 4
Drawing No: CD1182	Rev Sheet 3 1 of 1
Drawn by: R Northey Date: 17 NOV 2017	
Mould No: 9	Strap Sample 01