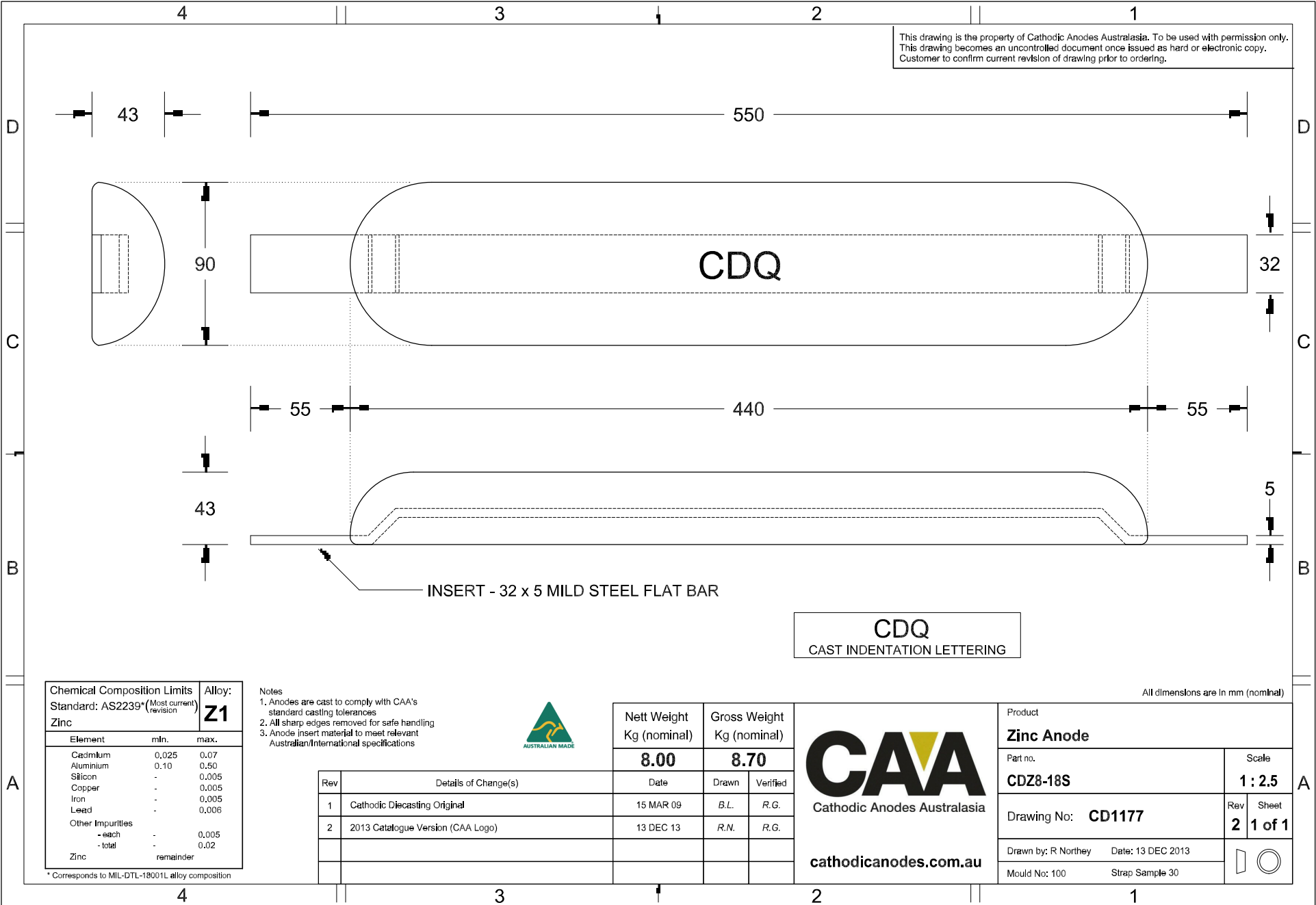


This drawing is the property of Cathodic Anodes Australasia. To be used with permission only. This drawing becomes an uncontrolled document once issued as hard or electronic copy. Customer to confirm current revision of drawing prior to ordering.



Chemical Composition Limits		Alloy:
Element	min.	max.
Standard: AS2239* (Most current revision)		<b>Z1</b>
Zinc		
Cadmium	0.025	0.07
Aluminium	0.10	0.50
Silicon	-	0.005
Copper	-	0.005
Iron	-	0.005
Lead	-	0.006
Other Impurities	-	-
- each	-	0.005
- total	-	0.02
Zinc	-	remainder

- Notes
1. Anodes are cast to comply with CAA's standard casting tolerances
  2. All sharp edges removed for safe handling
  3. Anode insert material to meet relevant Australian/International specifications



Rev	Details of Change(s)	Date	Drawn	Verified
1	Cathodic Diecasting Original	15 MAR 09	B.L.	R.G.
2	2013 Catalogue Version (CAA Logo)	13 DEC 13	R.N.	R.G.

**CAA**  
Cathodic Anodes Australasia  
cathodicanodes.com.au

Product		<b>Zinc Anode</b>	
Part no.	<b>CDZ8-18S</b>	Scale	<b>1 : 2.5</b>
Drawing No:	<b>CD1177</b>	Rev	<b>2</b>
		Sheet	<b>1 of 1</b>
Drawn by: R Northey	Date: 13 DEC 2013		
Mould No: 100	Strap Sample 30		

\* Corresponds to MIL-DTL-18001L alloy composition

All dimensions are in mm (nominal)