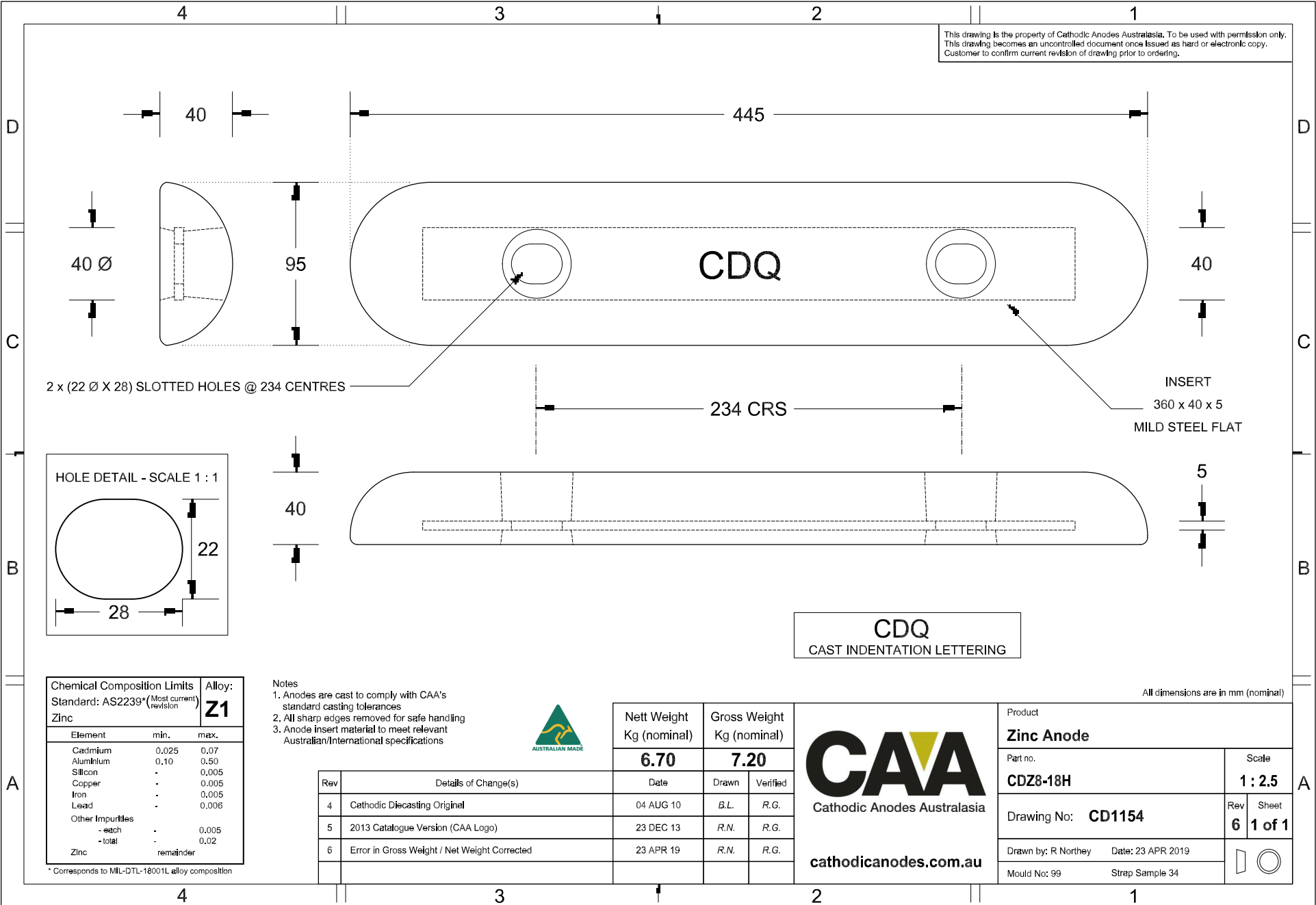


This drawing is the property of Cathodic Anodes Australasia. To be used with permission only. This drawing becomes an uncontrolled document once issued as hard or electronic copy. Customer to confirm current revision of drawing prior to ordering.



All dimensions are in mm (nominal)

Chemical Composition Limits		Alloy:
Standard: AS2239* (Most current revision)		<b>Z1</b>
Element	min.	max.
Cadmium	0.025	0.07
Aluminium	0.10	0.50
Silicon	-	0.005
Copper	-	0.005
Iron	-	0.005
Lead	-	0.006
Other Impurities		
- each	-	0.005
- total	-	0.02
Zinc		remainder

\* Corresponds to MIL-DTL-18001L alloy composition

- Notes
- Anodes are cast to comply with CAA's standard casting tolerances
  - All sharp edges removed for safe handling
  - Anode insert material to meet relevant Australian/International specifications



Rev	Details of Change(s)	Date	Drawn	Verified
4	Cathodic Diecasting Original	04 AUG 10	B.L.	R.G.
5	2013 Catalogue Version (CAA Logo)	23 DEC 13	R.N.	R.G.
6	Error in Gross Weight / Net Weight Corrected	23 APR 19	R.N.	R.G.

Nett Weight Kg (nominal)	Gross Weight Kg (nominal)
<b>6.70</b>	<b>7.20</b>

**CAA**  
Cathodic Anodes Australasia  
[cathodicanodes.com.au](http://cathodicanodes.com.au)

Product <b>Zinc Anode</b>	
Part no. <b>CDZ8-18H</b>	Scale <b>1 : 2.5</b>
Drawing No: <b>CD1154</b>	Rev Sheet <b>6 1 of 1</b>
Drawn by: R Northey	Date: 23 APR 2019
Mould No: 99	Strap Sample 34

