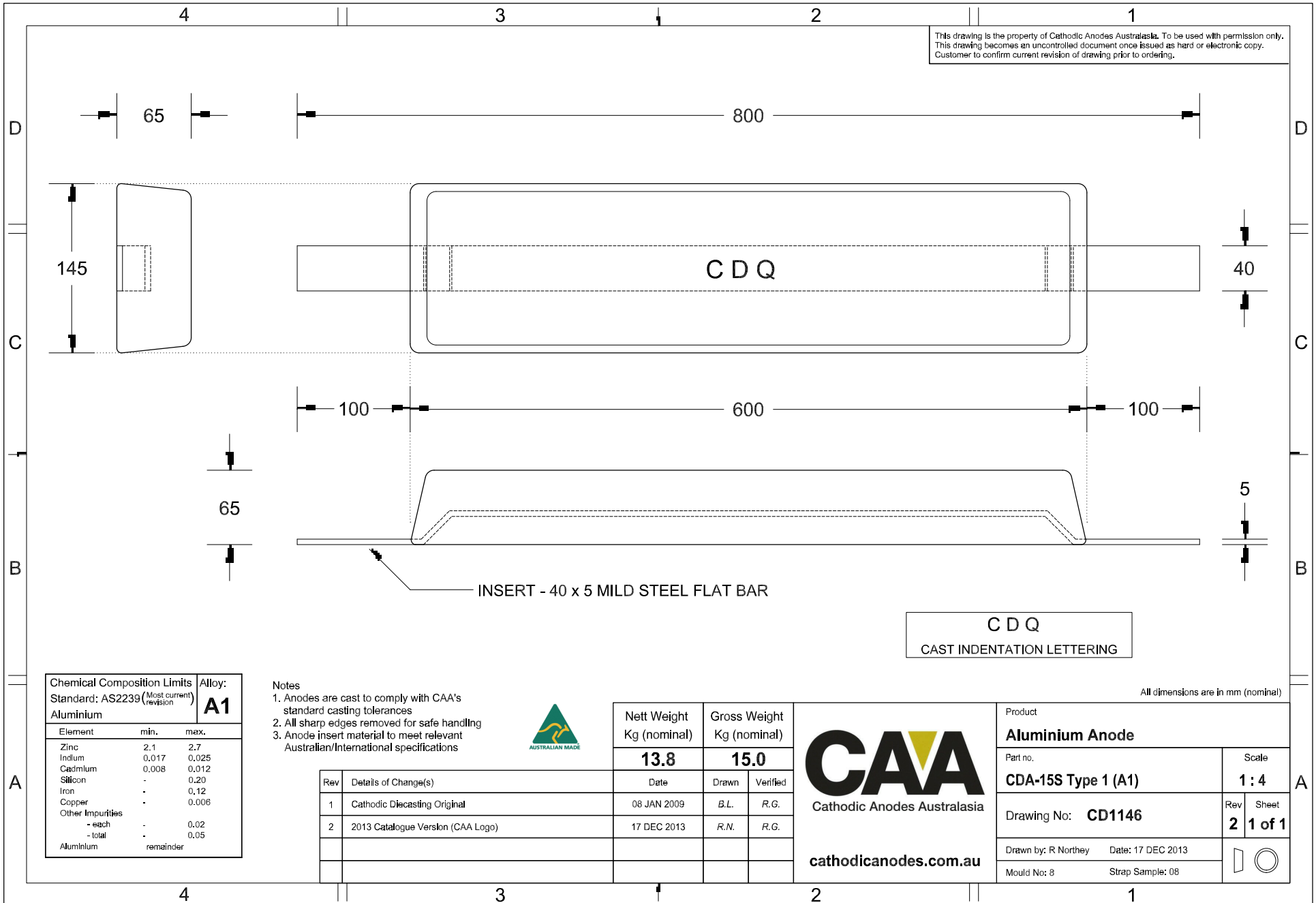


This drawing is the property of Cathodic Anodes Australasia. To be used with permission only.  
 This drawing becomes an uncontrolled document once issued as hard or electronic copy.  
 Customer to confirm current revision of drawing prior to ordering.



Chemical Composition Limits			Alloy:
Standard: AS2239 (Most current revision)			A1
Element	min.	max.	
Zinc	2.1	2.7	
Indium	0.017	0.025	
Cadmium	0.008	0.012	
Silicon	-	0.20	
Iron	-	0.12	
Copper	-	0.006	
Other Impurities	-	-	
- each	-	0.02	
- total	-	0.05	
Aluminium	remainder		

**Notes**

- Anodes are cast to comply with CAA's standard casting tolerances
- All sharp edges removed for safe handling
- Anode insert material to meet relevant Australian/International specifications



Nett Weight Kg (nominal)	Gross Weight Kg (nominal)
<b>13.8</b>	<b>15.0</b>

Rev	Details of Change(s)	Date	Drawn	Verified
1	Cathodic Diecasting Original	08 JAN 2009	B.L.	R.G.
2	2013 Catalogue Version (CAA Logo)	17 DEC 2013	R.N.	R.G.

**CAA**  
 Cathodic Anodes Australasia  
[cathodicanodes.com.au](http://cathodicanodes.com.au)

All dimensions are in mm (nominal)

Product <b>Aluminium Anode</b>			
Part no. <b>CDA-15S Type 1 (A1)</b>	Scale <b>1 : 4</b>		
Drawing No: <b>CD1146</b>	Rev <b>2</b>	Sheet <b>1 of 1</b>	
Drawn by: R Northey	Date: 17 DEC 2013		
Mould No: 8	Strap Sample: 08		