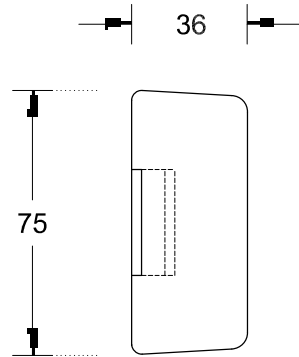


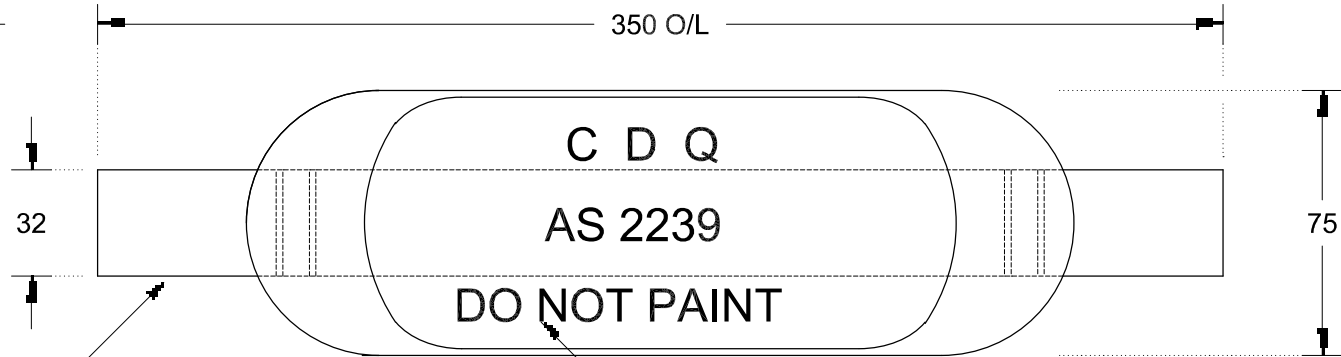
This drawing is the property of Cathodic Anodes Australasia. To be used with permission only.
 This drawing becomes an uncontrolled document once issued as hard or electronic copy.
 Customer to confirm current revision of drawing prior to ordering.

END VIEW

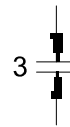
PLAN VIEW



32 x 3
MILD STEEL FLAT

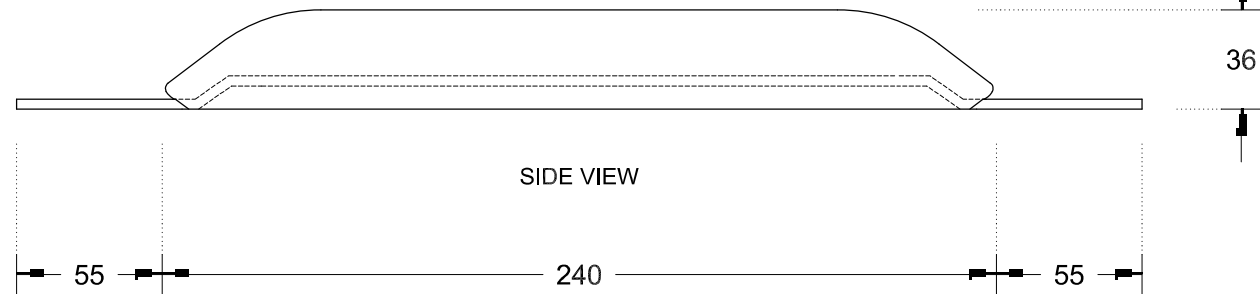


CAST INDENTATION LETTERING



3

SIDE VIEW



Chemical Composition Limits			Alloy:
Element	min.	max.	A6
Zinc	2.0	6.0	
Indium	0.01	0.02	
Cadmium	-	0.005	
Silicon	0.08	0.12	
Iron	-	0.12	
Magnesium	-	0.02	
Titanium	-	0.02	
Copper	-	0.006	
Tin	-	0.02	
Other Impurities	-	-	
- each	-	0.02	
- total	-	0.05	
Aluminium	remainder		

Notes

- Anodes are cast to comply with CAA's standard casting tolerances
- All sharp edges removed for safe handling
- Anode insert material to meet relevant Australian/International specifications



All dimensions are in mm (nominal)

Nett Weight Kg (nominal)	Gross Weight Kg (nominal)
1.30	1.60

Rev	Details of Change(s)	Date	Initials
1	Cathodic Diecasting Original	31 OCT 08	B.L.
2	2013 Catalogue Version (CAA Logo)	20 NOV 13	R.N.

CAA
 Cathodic Anodes Australasia
 cathodicanodes.com.au

Product Aluminium Anode	
Part no. CDA-1.55S Type 1 (A6)	Scale 1 : 2
Drawing No: CD1123	Rev Sheet 2 1 of 1
Drawn by: R Northey Date: 20 NOV 2013	
Mould No: 52 Insert: In House	