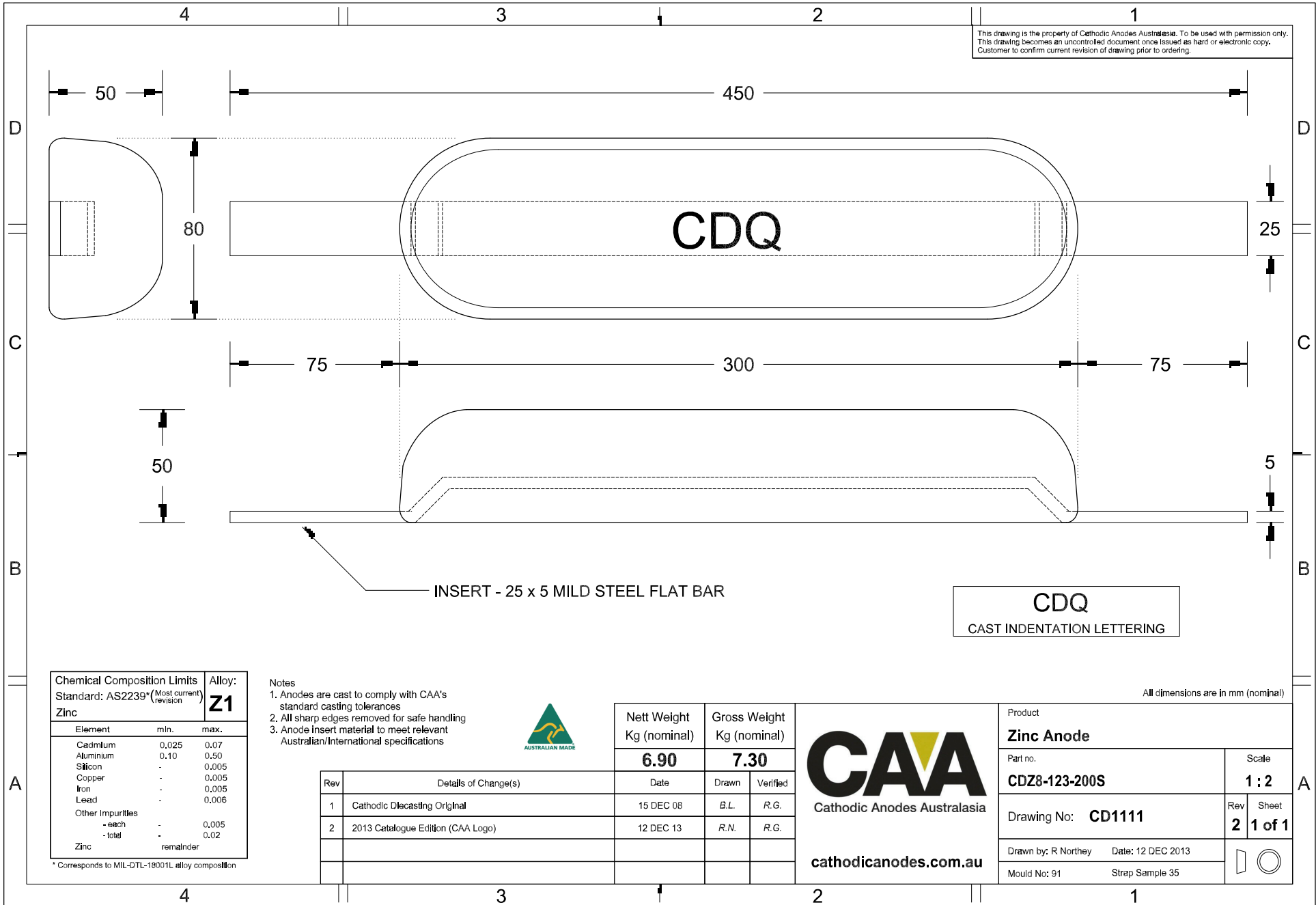


This drawing is the property of Cathodic Anodes Australasia. To be used with permission only.
 This drawing becomes an uncontrolled document once issued as hard or electronic copy.
 Customer to confirm current revision of drawing prior to ordering.



INSERT - 25 x 5 MILD STEEL FLAT BAR

CDQ
 CAST INDENTATION LETTERING

All dimensions are in mm (nominal)

Chemical Composition Limits		Alloy: Z1
Standard: AS2239* (Most current revision)		
Zinc		
Element	min.	max.
Cadmium	0.025	0.07
Aluminium	0.10	0.50
Silicon	-	0.005
Copper	-	0.005
Iron	-	0.005
Lead	-	0.006
Other Impurities	-	-
- each	-	0.005
- total	-	0.02
Zinc	remainder	

* Corresponds to MIL-DTL-18001L alloy composition

Notes

1. Anodes are cast to comply with CAA's standard casting tolerances
2. All sharp edges removed for safe handling
3. Anode insert material to meet relevant Australian/International specifications



Rev	Details of Change(s)	Date	Nett Weight		Gross Weight	
			Kg (nominal)		Kg (nominal)	
			6.90		7.30	
1	Cathodic Diecasting Original	15 DEC 08		B.L.	R.G.	
2	2013 Catalogue Edition (CAA Logo)	12 DEC 13		R.N.	R.G.	

CAA
 Cathodic Anodes Australasia
cathodicanodes.com.au

Product Zinc Anode		Scale 1 : 2	
Part no. CDZ8-123-200S		Rev Sheet 2 1 of 1	
Drawing No: CD1111		Drawn by: R Northey Date: 12 DEC 2013	
Mould No: 91		Strap Sample 35	