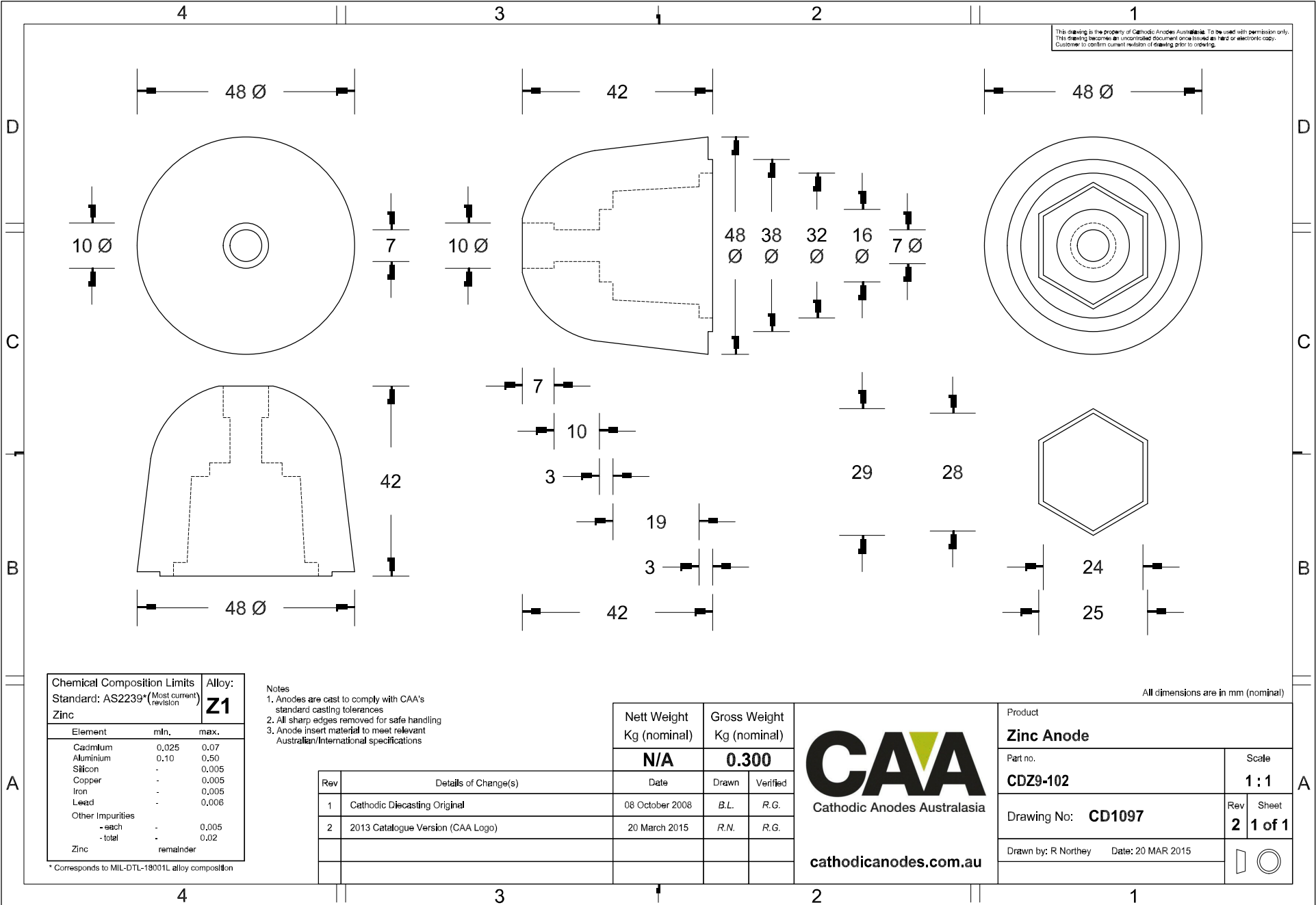


This drawing is the property of Cathodic Anodes Australasia. To be used with permission only.
 This drawing becomes an uncontrolled document once issued as hard or electronic copy.
 Customer to confirm current revision of drawing prior to casting.



All dimensions are in mm (nominal)

Chemical Composition Limits		Alloy:
Standard: AS2239* (Most current revision)		Z1
Zinc		
Element	min.	max.
Cadmium	0.025	0.07
Aluminium	0.10	0.50
Silicon	-	0.005
Copper	-	0.005
Iron	-	0.005
Lead	-	0.006
Other Impurities		
- each	-	0.005
- total	-	0.02
Zinc	remainder	

* Corresponds to MIL-DTL-18001L alloy composition

- Notes
1. Anodes are cast to comply with CAA's standard casting tolerances
 2. All sharp edges removed for safe handling
 3. Anode insert material to meet relevant Australian/International specifications

Rev	Details of Change(s)	Date	Drawn	Verified
1	Cathodic Diecasting Original	08 October 2008	B.L.	R.G.
2	2013 Catalogue Version (CAA Logo)	20 March 2015	R.N.	R.G.

Nett Weight Kg (nominal)	Gross Weight Kg (nominal)
N/A	0.300

CAA
 Cathodic Anodes Australasia
cathodicanodes.com.au

Product Zinc Anode	
Part no. CDZ9-102	Scale 1 : 1
Drawing No: CD1097	Rev Sheet 2 1 of 1
Drawn by: R Northey Date: 20 MAR 2015	

