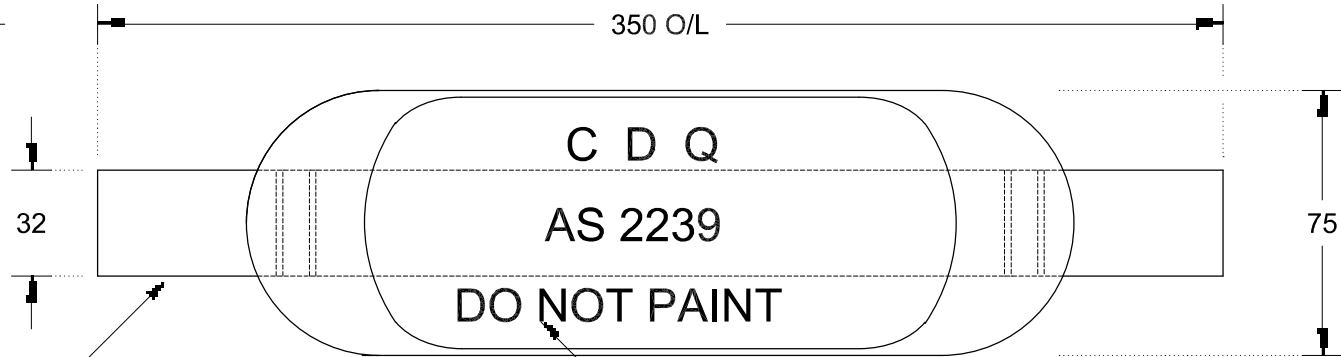
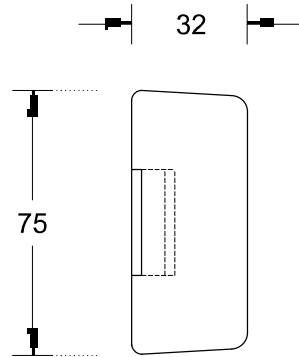


This drawing is the property of Cathodic Anodes Australasia. To be used with permission only.  
 This drawing becomes an uncontrolled document once issued as hard or electronic copy.  
 Customer to confirm current revision of drawing prior to ordering.

END VIEW

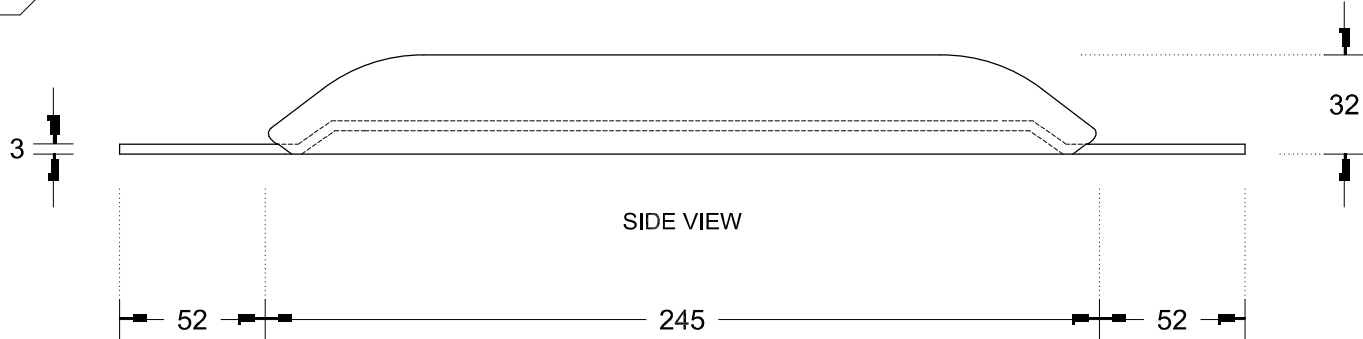
PLAN VIEW



32 x 3  
 GALVANISED STEEL  
 INSERT STRAP

CAST INDENTATION LETTERING

SIDE VIEW



All dimensions are in mm (nominal)

Chemical Composition Limits		Alloy:
Standard: AS2239* (Most current revision)		Z1
Element	min.	max.
Cadmium	0.025	0.07
Aluminium	0.10	0.50
Silicon	-	0.005
Copper	-	0.005
Iron	-	0.005
Lead	-	0.006
Other Impurities		
- each	-	0.005
- total	-	0.02
Zinc	remainder	

\* Corresponds to MIL-DTL-18001L alloy composition

Notes

1. Anodes are cast to comply with CAA's standard casting tolerances
2. All sharp edges removed for safe handling
3. Anode insert material to meet relevant Australian/International specifications



Nett Weight Kg (nominal)	Gross Weight Kg (nominal)
<b>3.30</b>	<b>3.60</b>

Rev	Details of Change(s)	Date	Initials
1	Cathodic Diecasting Original	30 SEP 08	B.L.
2	2013 Catalogue Version (CAA Logo)	07 FEB 13	R.N.

**CAA**  
 Cathodic Anodes Australasia  
[cathodicanodes.com.au](http://cathodicanodes.com.au)

Product <b>Zinc Anode</b>	
Part no. <b>CDZ1-103-125S</b>	Scale <b>1 : 2</b>
Drawing No: <b>CD1090</b>	Rev <b>2</b> Sheet <b>1 of 1</b>
Drawn by: R Northey Date: 07 FEB 2013	
Mould No: 51	Insert: Strap Sample 09