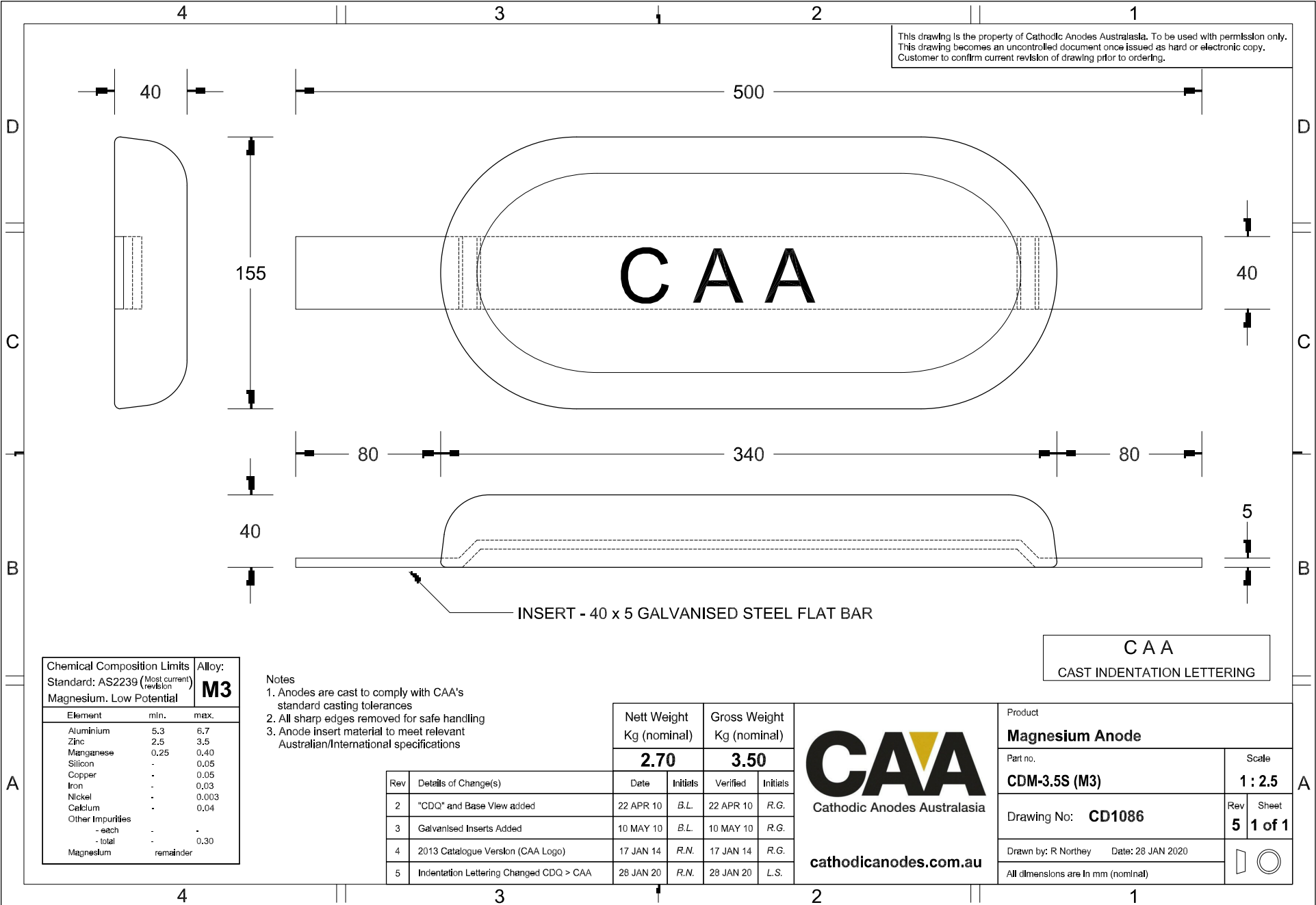


This drawing is the property of Cathodic Anodes Australasia. To be used with permission only. This drawing becomes an uncontrolled document once issued as hard or electronic copy. Customer to confirm current revision of drawing prior to ordering.



**CAA**  
CAST INDENTATION LETTERING

Chemical Composition Limits		Alloy:
Element	min.	max.
Standard: AS2239 (Most current revision)		<b>M3</b>
Magnesium. Low Potential		
Aluminium	5.3	6.7
Zinc	2.5	3.5
Manganese	0.25	0.40
Silicon	-	0.05
Copper	-	0.05
Iron	-	0.03
Nickel	-	0.003
Calcium	-	0.04
Other Impurities	-	-
- each	-	-
- total	-	0.30
Magnesium	remainder	

- Notes
1. Anodes are cast to comply with CAA's standard casting tolerances
  2. All sharp edges removed for safe handling
  3. Anode insert material to meet relevant Australian/International specifications

Rev	Details of Change(s)	Date	Initials	Verified	Initials
2	"CDQ" and Base View added	22 APR 10	B.L.	22 APR 10	R.G.
3	Galvanised Inserts Added	10 MAY 10	B.L.	10 MAY 10	R.G.
4	2013 Catalogue Version (CAA Logo)	17 JAN 14	R.N.	17 JAN 14	R.G.
5	Indentation Lettering Changed CDQ > CAA	28 JAN 20	R.N.	28 JAN 20	L.S.

Nett Weight	Gross Weight
Kg (nominal)	Kg (nominal)
<b>2.70</b>	<b>3.50</b>

**CAA**  
Cathodic Anodes Australasia  
[cathodicanodes.com.au](http://cathodicanodes.com.au)

Product	
<b>Magnesium Anode</b>	
Part no.	Scale
<b>CDM-3.5S (M3)</b>	<b>1 : 2.5</b>
Drawing No: <b>CD1086</b>	Rev Sheet
	<b>5 1 of 1</b>
Drawn by: R Northey Date: 28 JAN 2020	
All dimensions are in mm (nominal)	