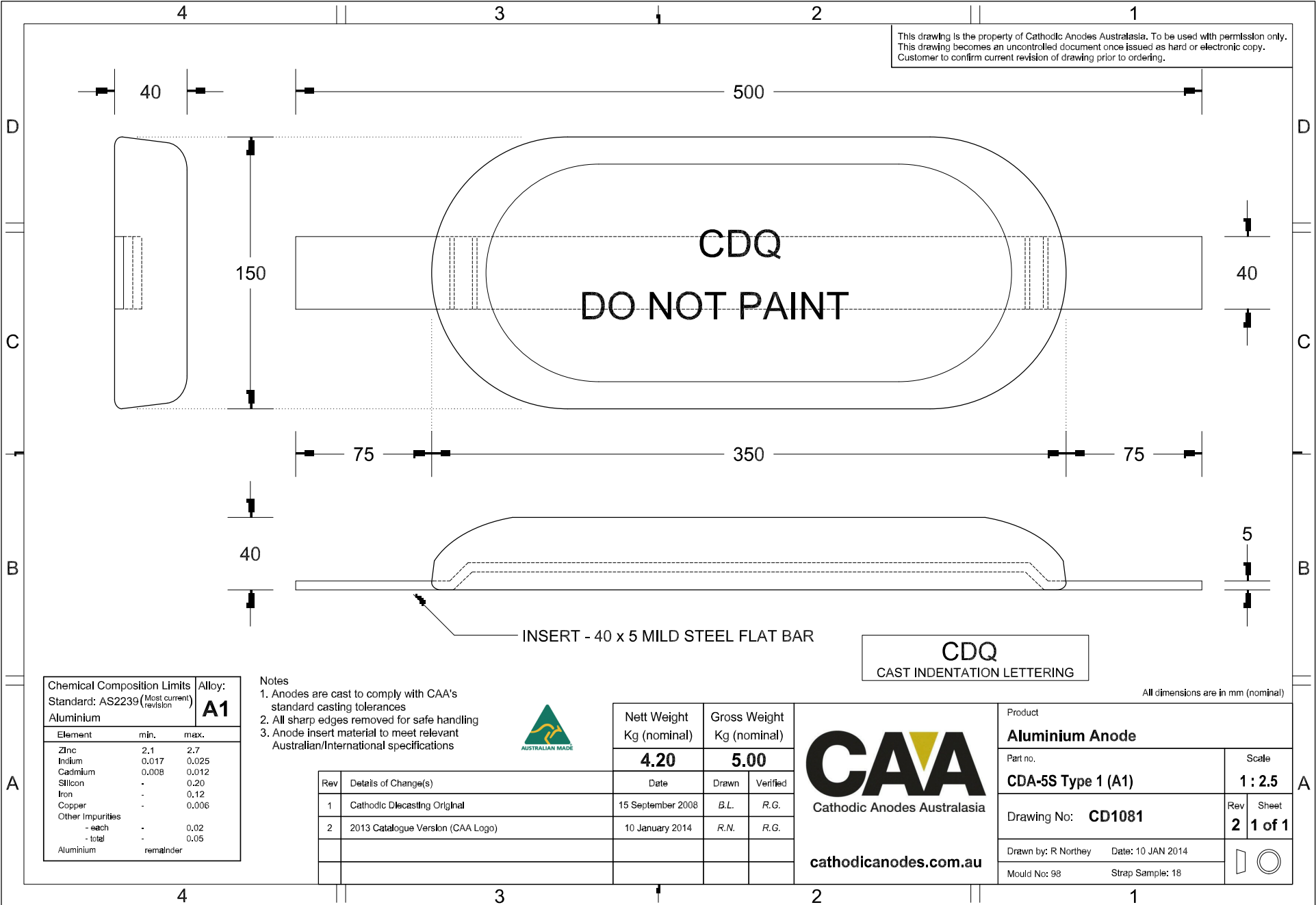


This drawing is the property of Cathodic Anodes Australasia. To be used with permission only.
 This drawing becomes an uncontrolled document once issued as hard or electronic copy.
 Customer to confirm current revision of drawing prior to ordering.



CDQ
DO NOT PAINT

CDQ
 CAST INDENTATION LETTERING

All dimensions are in mm (nominal)

Chemical Composition Limits			Alloy:
Standard: AS2239 (Most current revision)			A1
Aluminium			
Element	min.	max.	
Zinc	2.1	2.7	
Indium	0.017	0.025	
Cadmium	0.008	0.012	
Silicon	-	0.20	
Iron	-	0.12	
Copper	-	0.006	
Other Impurities			
- each	-	0.02	
- total	-	0.05	
Aluminium	remainder		

- Notes
1. Anodes are cast to comply with CAA's standard casting tolerances
 2. All sharp edges removed for safe handling
 3. Anode insert material to meet relevant Australian/International specifications



Rev	Details of Change(s)	Date	Drawn	Verified
1	Cathodic Diecasting Original	15 September 2008	B.L.	R.G.
2	2013 Catalogue Version (CAA Logo)	10 January 2014	R.N.	R.G.

Nett Weight	Gross Weight
Kg (nominal)	Kg (nominal)
4.20	5.00



Product	
Aluminium Anode	
Part no.	Scale
CDA-5S Type 1 (A1)	1 : 2.5
Drawing No:	Rev Sheet
CD1081	2 1 of 1
Drawn by: R Northey	Date: 10 JAN 2014
Mould No: 98	Strap Sample: 18