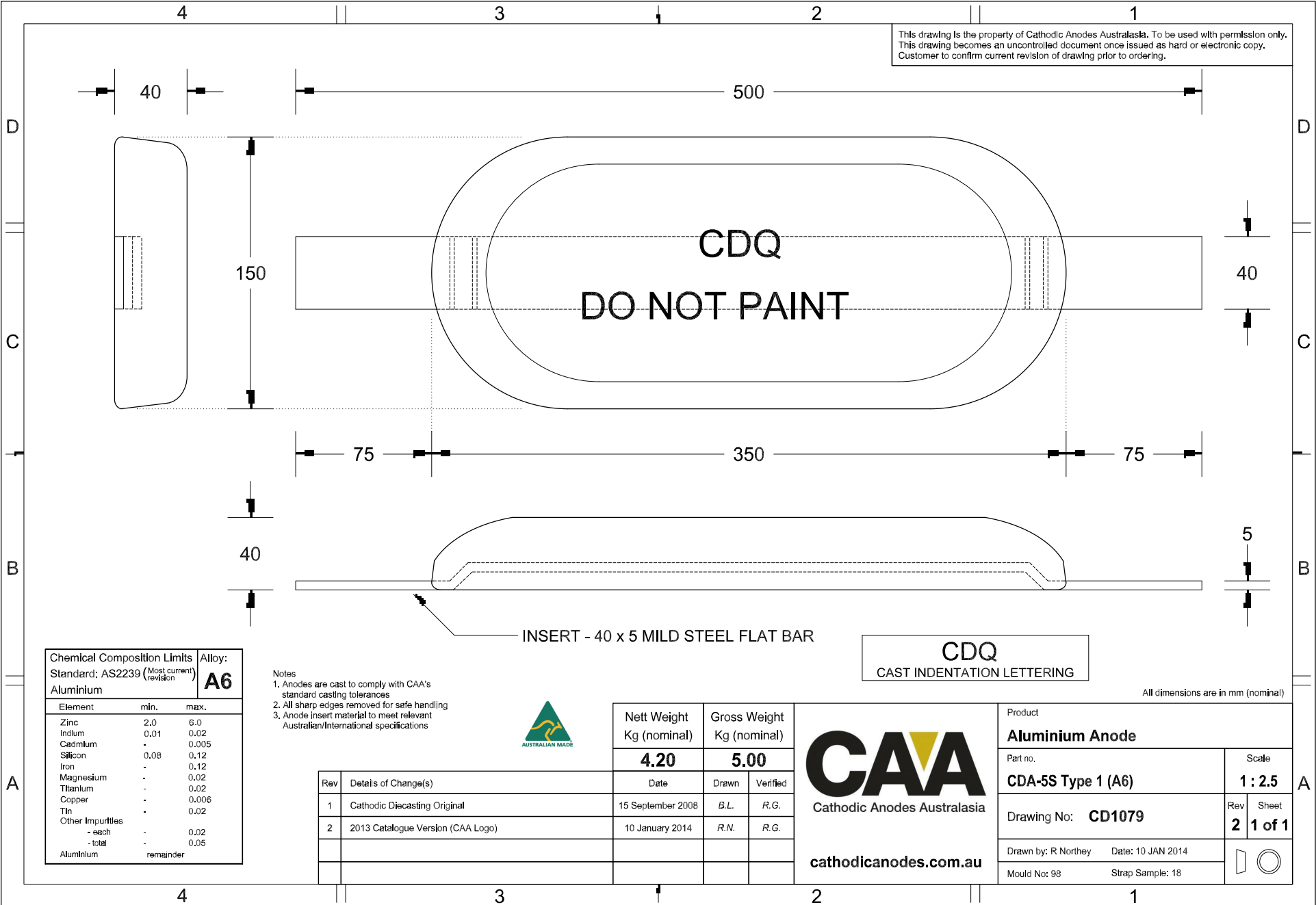


This drawing is the property of Cathodic Anodes Australasia. To be used with permission only. This drawing becomes an uncontrolled document once issued as hard or electronic copy. Customer to confirm current revision of drawing prior to ordering.



Chemical Composition Limits			Alloy: A6
Element	min.	max.	
Standard: AS2239 (Most current revision)			
Aluminium			
Zinc	2.0	6.0	
Indium	0.01	0.02	
Cadmium	-	0.005	
Silicon	0.08	0.12	
Iron	-	0.12	
Magnesium	-	0.02	
Titanium	-	0.02	
Copper	-	0.006	
Tin	-	0.02	
Other Impurities			
- each	-	0.02	
- total	-	0.05	
Aluminium	remainder		

- Notes
- Anodes are cast to comply with CAA's standard casting tolerances
 - All sharp edges removed for safe handling
 - Anode insert material to meet relevant Australian/International specifications



Rev	Details of Change(s)	Date	Nett Weight		Gross Weight	
			Kg (nominal)		Kg (nominal)	
1	Cathodic Diecasting Original	15 September 2008	4.20		5.00	
2	2013 Catalogue Version (CAA Logo)	10 January 2014				

CDQ
CAST INDENTATION LETTERING

All dimensions are in mm (nominal)

Cathodic Anodes Australasia

cathodicanodes.com.au

Product Aluminium Anode	
Part no. CDA-5S Type 1 (A6)	Scale 1 : 2.5
Drawing No: CD1079	Rev Sheet 2 1 of 1
Drawn by: R Northey	Date: 10 JAN 2014
Mould No: 98	Strap Sample: 18

