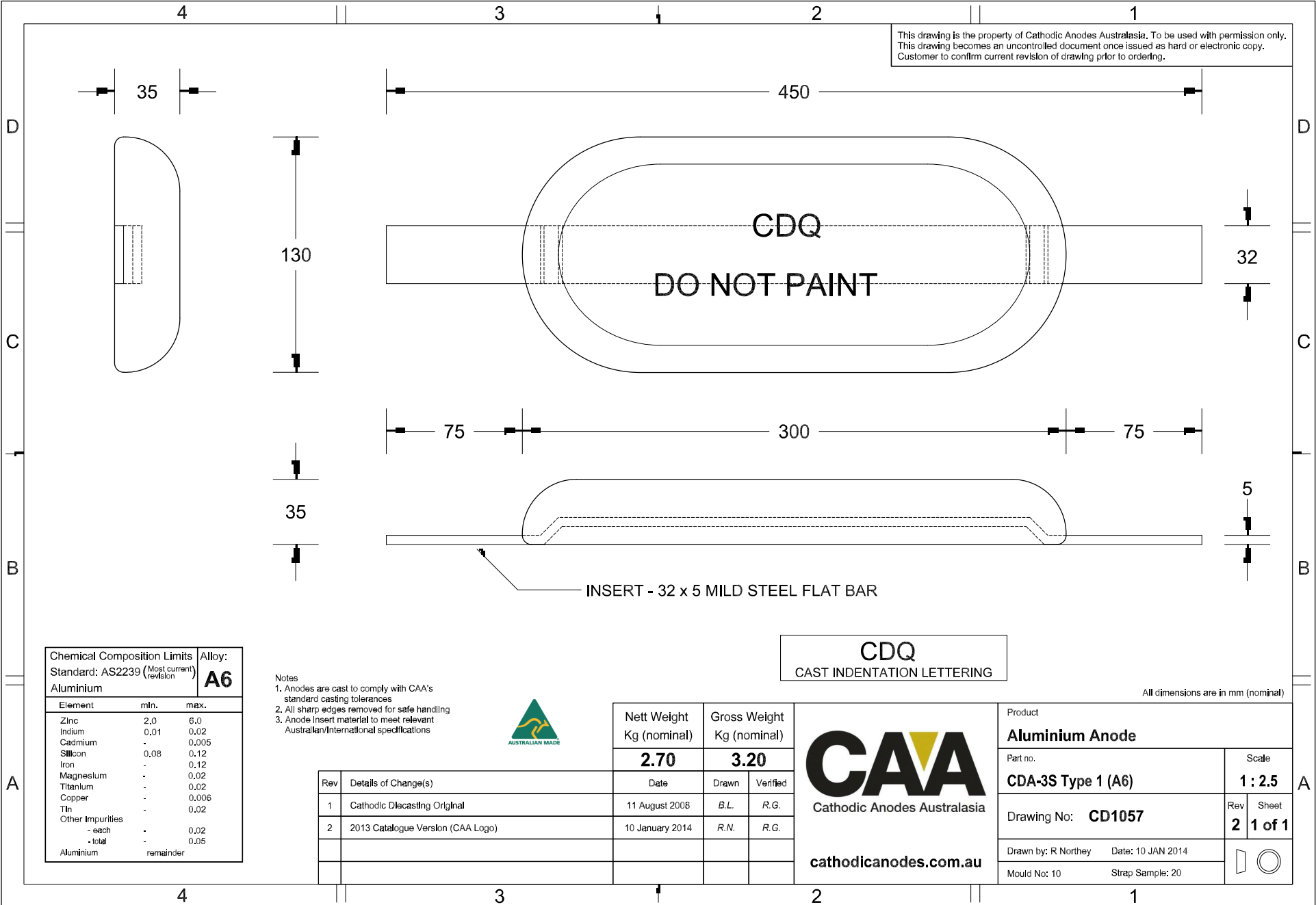


This drawing is the property of Cathodic Anodes Australasia. To be used with permission only. This drawing becomes an uncontrolled document once issued as hard or electronic copy. Customer to confirm current revision of drawing prior to ordering.



Chemical Composition Limits		Alloy:
Standard: AS2239 (Most current revision)		A6
Aluminium		
Element	min.	max.
Zinc	2.0	6.0
Indium	0.01	0.02
Cadmium	-	0.005
Silicon	0.08	0.12
Iron	-	0.12
Magnesium	-	0.02
Titanium	-	0.02
Copper	-	0.006
Tin	-	0.02
Other Impurities		
- each	-	0.02
- total	-	0.05
Aluminium		remainder

- Notes
- Anodes are cast to comply with CAA's standard casting tolerances
 - All sharp edges removed for safe handling
 - Anode insert material to meet relevant Australian/International specifications



CDQ
CAST INDENTATION LETTERING

All dimensions are in mm (nominal)

Rev	Details of Change(s)	Date	Nett Weight		Gross Weight	
			Kg (nominal)		Kg (nominal)	
1	Cathodic Diecasting Original	11 August 2008	2.70		3.20	
2	2013 Catalogue Version (CAA Logo)	10 January 2014				

CAA
Cathodic Anodes Australasia
cathodicanodes.com.au

Product		Aluminium Anode	
Part no.	CDA-3S Type 1 (A6)	Scale	1 : 2.5
Drawing No:	CD1057	Rev	2
		Sheet	1 of 1
Drawn by: R Northey	Date: 10 JAN 2014		
Mould No: 10	Strap Sample: 20		