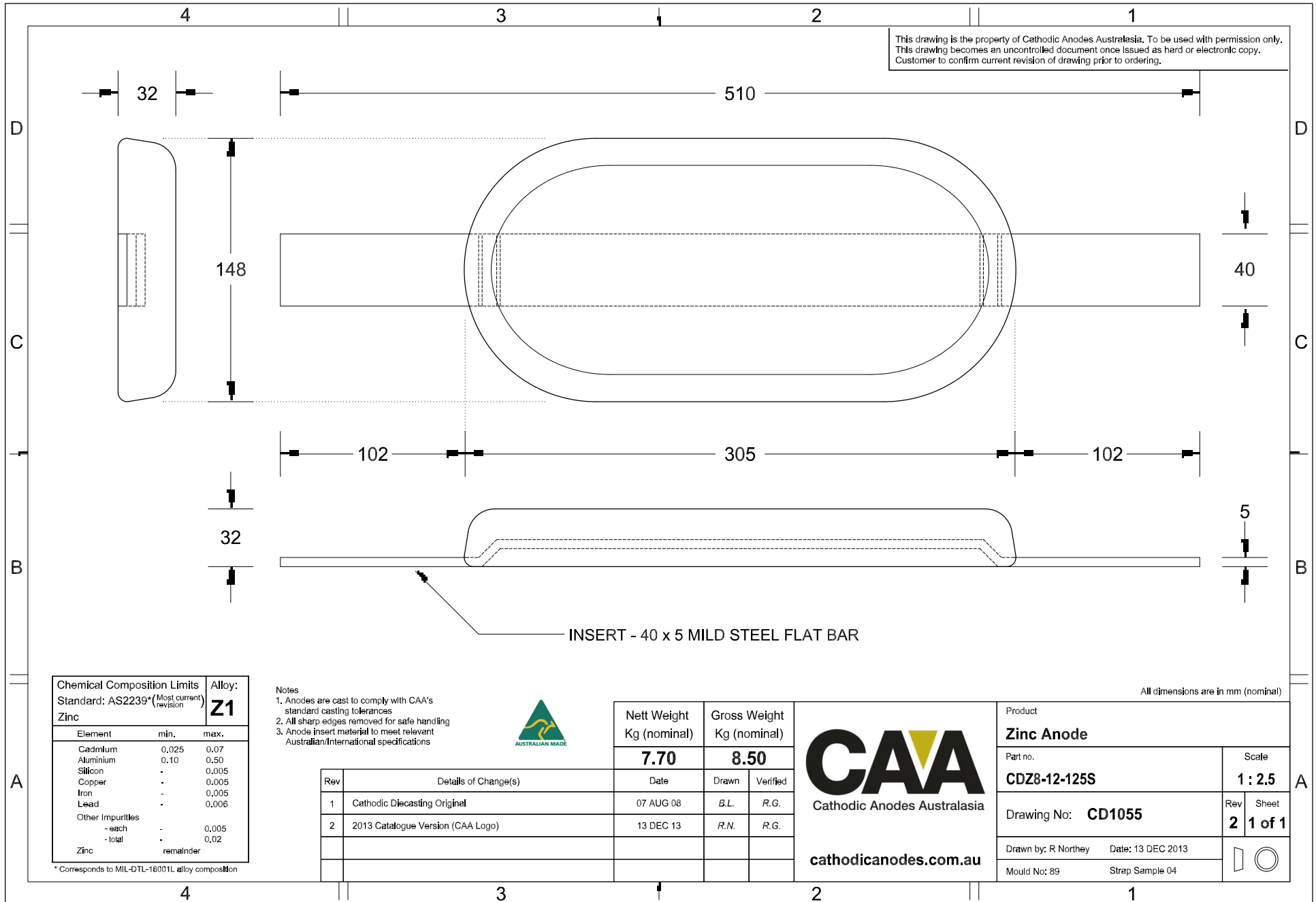


This drawing is the property of Cathodic Anodes Australasia. To be used with permission only.
 This drawing becomes an uncontrolled document once issued as hard or electronic copy.
 Customer to confirm current revision of drawing prior to ordering.



INSERT - 40 x 5 MILD STEEL FLAT BAR

Chemical Composition Limits		Alloy:
Standard: AS2239* (Most current revision)		Z1
Zinc		
Element	min.	max.
Cadmium	0.025	0.07
Aluminium	0.10	0.50
Silicon	-	0.005
Copper	-	0.005
Iron	-	0.005
Lead	-	0.006
Other Impurities		
- each	-	0.005
- total	-	0.02
Zinc		remainder

* Corresponds to MIL-DTL-18001L alloy composition

Notes

1. Anodes are cast to comply with CAA's standard casting tolerances
2. All sharp edges removed for safe handling
3. Anode insert material to meet relevant Australian/International specifications



Rev	Details of Change(s)	Date	Drawn	Verified
1	Cathodic Diecasting Original	07 AUG 08	B.L.	R.G.
2	2013 Catalogue Version (CAA Logo)	13 DEC 13	R.N.	R.G.

Nett Weight	Gross Weight
Kg (nominal)	Kg (nominal)
7.70	8.50

CAA
 Cathodic Anodes Australasia
 cathodicanodes.com.au

All dimensions are in mm (nominal)

Product		Zinc Anode	
Part no.	CDZ8-12-125S	Scale	1 : 2.5
Drawing No:	CD1055	Rev	2
		Sheet	1 of 1
Drawn by: R Northey	Date: 13 DEC 2013		
Mould No: 89	Strap Sample 04		