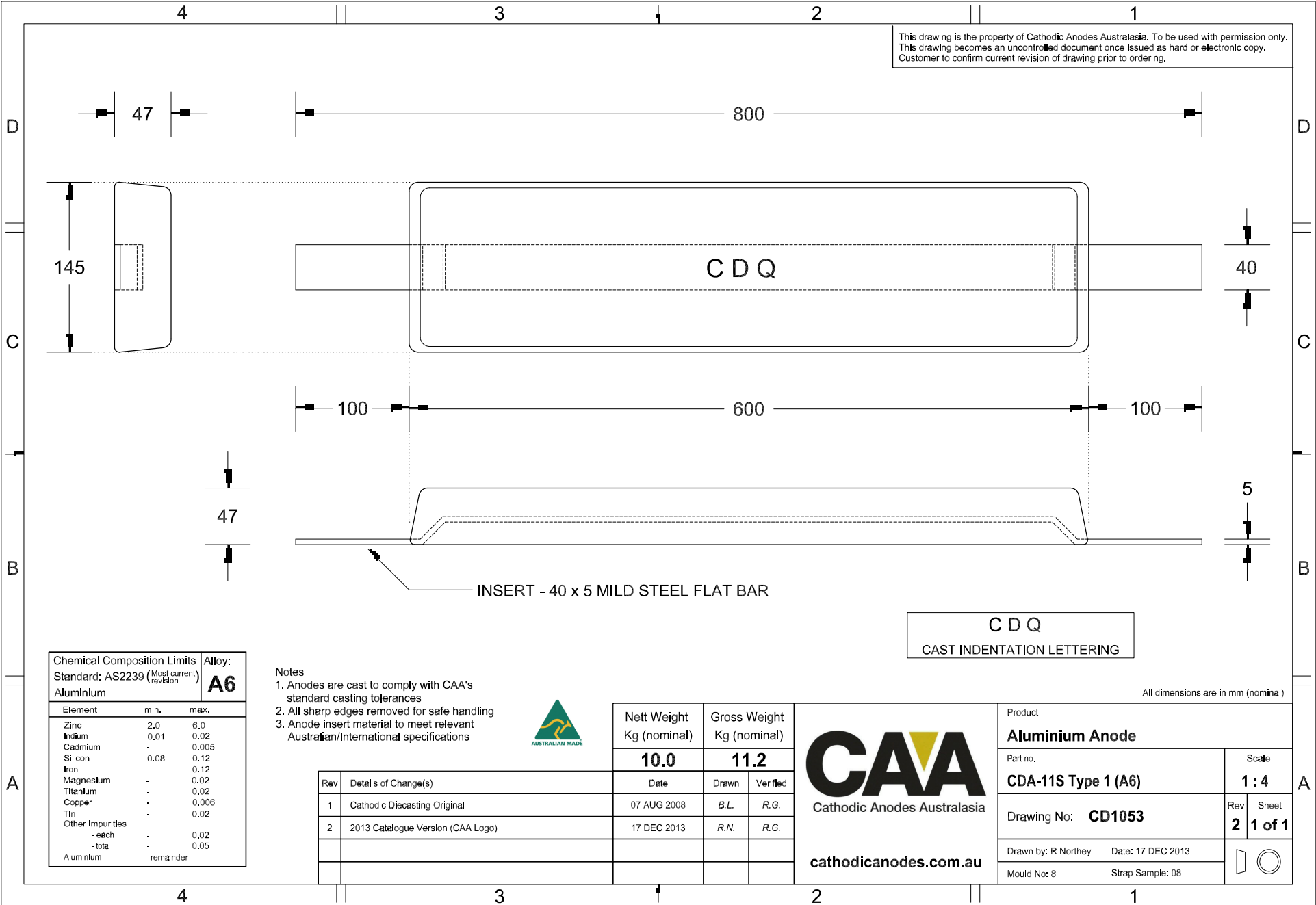


This drawing is the property of Cathodic Anodes Australasia. To be used with permission only. This drawing becomes an uncontrolled document once issued as hard or electronic copy. Customer to confirm current revision of drawing prior to ordering.



Chemical Composition Limits			Alloy: A6
Element	min.	max.	
Standard: AS2239 (Most current revision)			
Aluminium			
Zinc	2.0	6.0	
Indium	0.01	0.02	
Cadmium	-	0.005	
Silicon	0.08	0.12	
Iron	-	0.12	
Magnesium	-	0.02	
Titanium	-	0.02	
Copper	-	0.006	
Tin	-	0.02	
Other Impurities	-	-	
- each	-	0.02	
- total	-	0.05	
Aluminium	remainder	-	

- Notes
- Anodes are cast to comply with CAA's standard casting tolerances
 - All sharp edges removed for safe handling
 - Anode insert material to meet relevant Australian/International specifications



Rev	Details of Change(s)	Date	Drawn	Verified
1	Cathodic Diecasting Original	07 AUG 2008	B.L.	R.G.
2	2013 Catalogue Version (CAA Logo)	17 DEC 2013	R.N.	R.G.

Nett Weight Kg (nominal)	Gross Weight Kg (nominal)
10.0	11.2

CAA
Cathodic Anodes Australasia
cathodicanodes.com.au

C D Q
CAST INDENTATION LETTERING

Product Aluminium Anode	
Part no. CDA-11S Type 1 (A6)	Scale 1 : 4
Drawing No: CD1053	Rev Sheet 2 1 of 1
Drawn by: R Northey	Date: 17 DEC 2013
Mould No: 8	Strap Sample: 08

All dimensions are in mm (nominal)