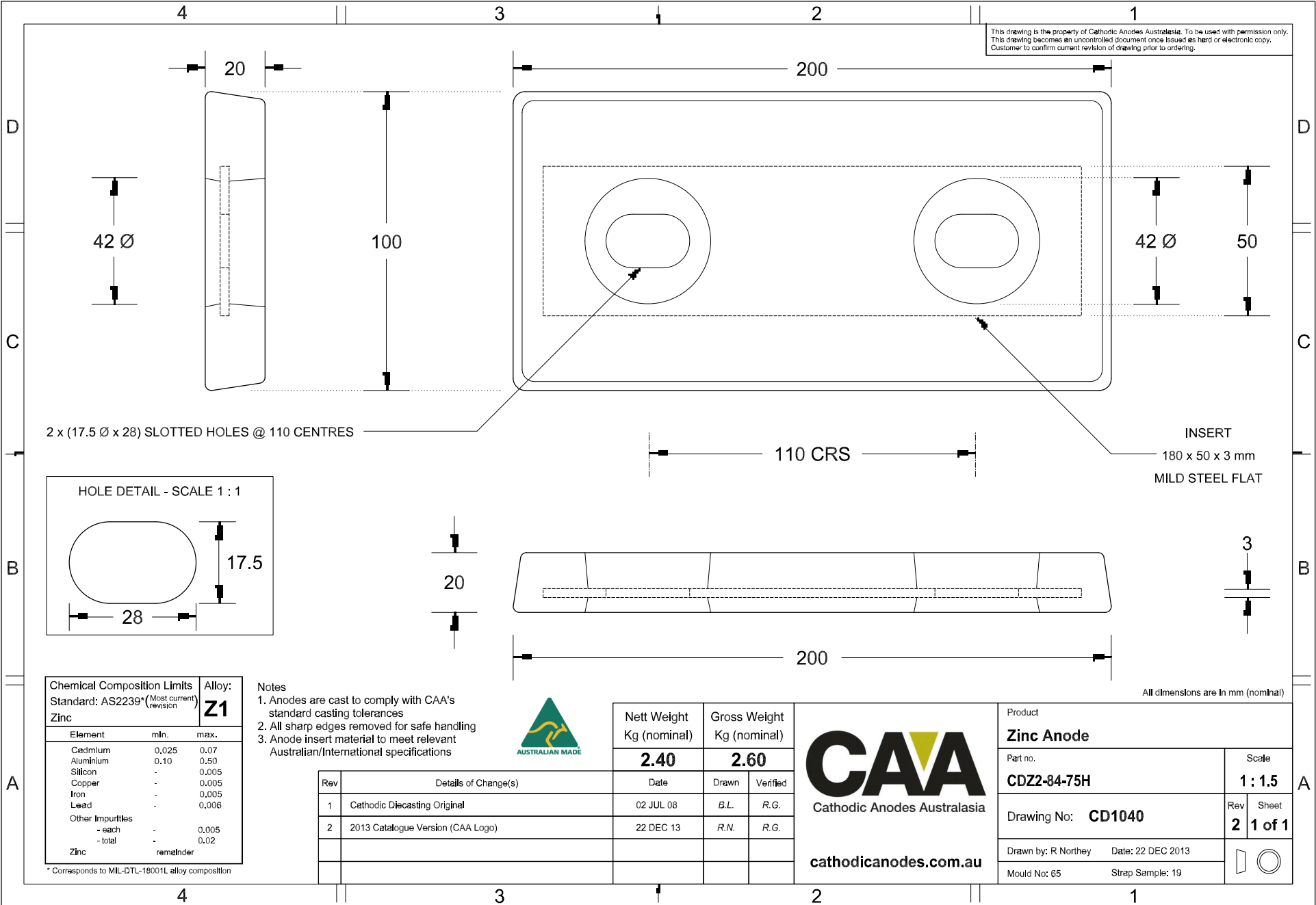
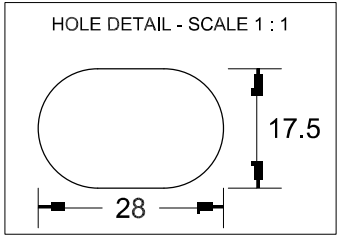


This drawing is the property of Cathodic Anodes Australasia. To be used with permission only. This drawing becomes an uncontrolled document once issued as hard or electronic copy. Customer to confirm current revision of drawing prior to ordering.



2 x (17.5 Ø x 28) SLOTTED HOLES @ 110 CENTRES

INSERT
180 x 50 x 3 mm
MILD STEEL FLAT



All dimensions are in mm (nominal)

Chemical Composition Limits		Alloy:
Standard: AS2239* (Most current revision)		Z1
Element	min.	max.
Cadmium	0.025	0.07
Aluminium	0.10	0.50
Silicon	-	0.005
Copper	-	0.005
Iron	-	0.005
Lead	-	0.006
Other Impurities		
- each	-	0.005
- total	-	0.02
Zinc	remainder	

- Notes
1. Anodes are cast to comply with CAA's standard casting tolerances
 2. All sharp edges removed for safe handling
 3. Anode insert material to meet relevant Australian/International specifications



Rev	Details of Change(s)	Date	Drawn	Verified
1	Cathodic Diecasting Original	02 JUL 08	B.L.	R.G.
2	2013 Catalogue Version (CAA Logo)	22 DEC 13	R.N.	R.G.

Nett Weight Kg (nominal)	Gross Weight Kg (nominal)
2.40	2.60



Product Zinc Anode	
Part no. CDZ2-84-75H	Scale 1 : 1.5
Drawing No: CD1040	Rev Sheet 2 1 of 1
Drawn by: R Northey	Date: 22 DEC 2013
Mould No: 65	Strap Sample: 19

* Corresponds to MIL-DTL-18001L alloy composition