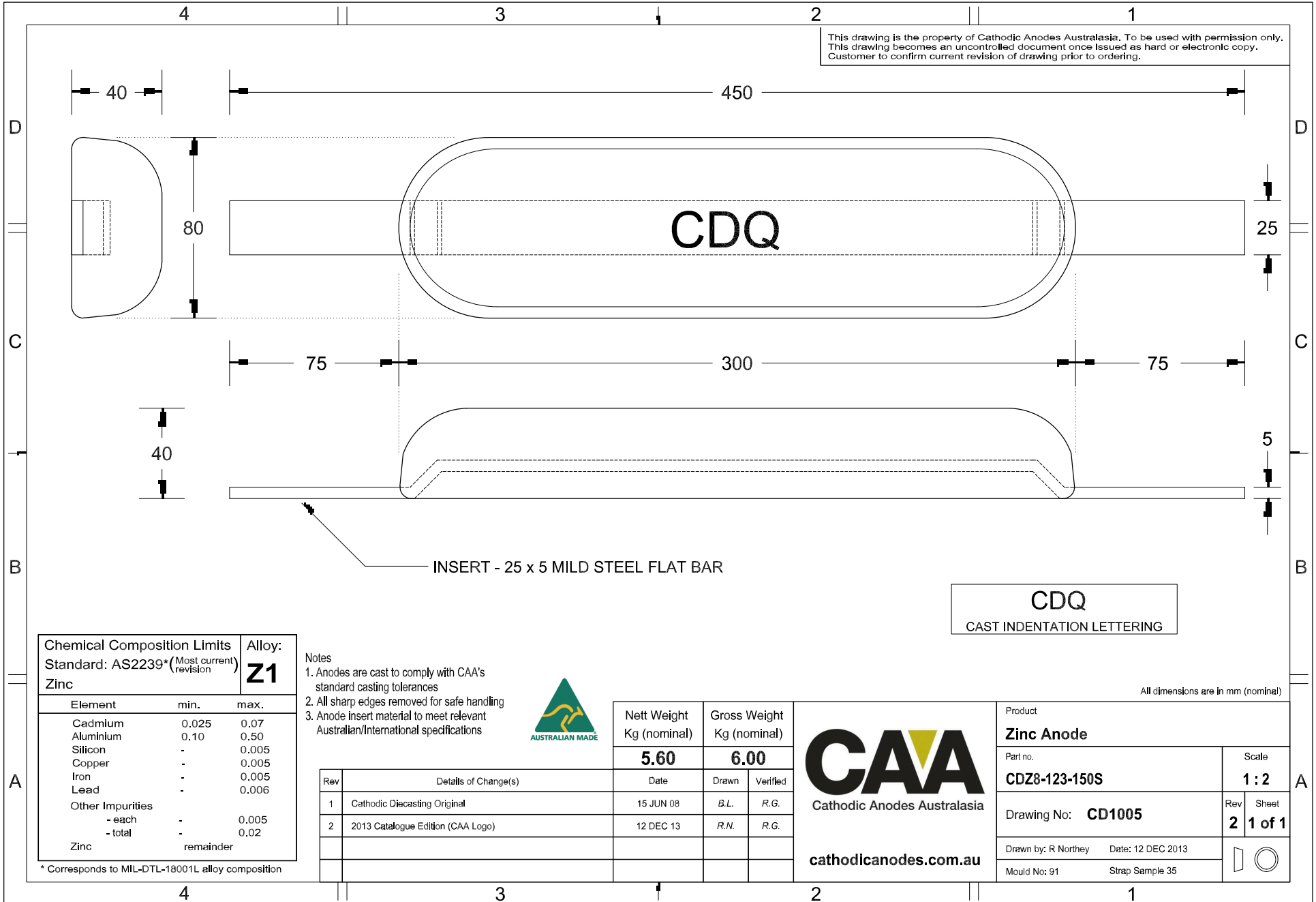


This drawing is the property of Cathodic Anodes Australasia. To be used with permission only. This drawing becomes an uncontrolled document once issued as hard or electronic copy. Customer to confirm current revision of drawing prior to ordering.



**CDQ**  
CAST INDENTATION LETTERING

Chemical Composition Limits		Alloy:
Standard: AS2239* (Most current revision)		<b>Z1</b>
Element	min.	max.
Cadmium	0.025	0.07
Aluminium	0.10	0.50
Silicon	-	0.005
Copper	-	0.005
Iron	-	0.005
Lead	-	0.006
Other Impurities		
- each	-	0.005
- total	-	0.02
Zinc	remainder	

\* Corresponds to MIL-DTL-18001L alloy composition

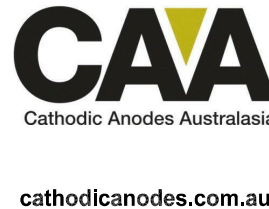
Notes

- Anodes are cast to comply with CAA's standard casting tolerances
- All sharp edges removed for safe handling
- Anode insert material to meet relevant Australian/International specifications



Nett Weight Kg (nominal)	Gross Weight Kg (nominal)
<b>5.60</b>	<b>6.00</b>

Rev	Details of Change(s)	Date	Drawn	Verified
1	Cathodic Diecasting Original	15 JUN 08	B.L.	R.G.
2	2013 Catalogue Edition (CAA Logo)	12 DEC 13	R.N.	R.G.



All dimensions are in mm (nominal)

Product <b>Zinc Anode</b>	
Part no. <b>CDZ8-123-150S</b>	Scale <b>1 : 2</b>
Drawing No: <b>CD1005</b>	Rev Sheet <b>2 1 of 1</b>
Drawn by: R Northey Date: 12 DEC 2013	
Mould No: 91 Strap Sample 35	