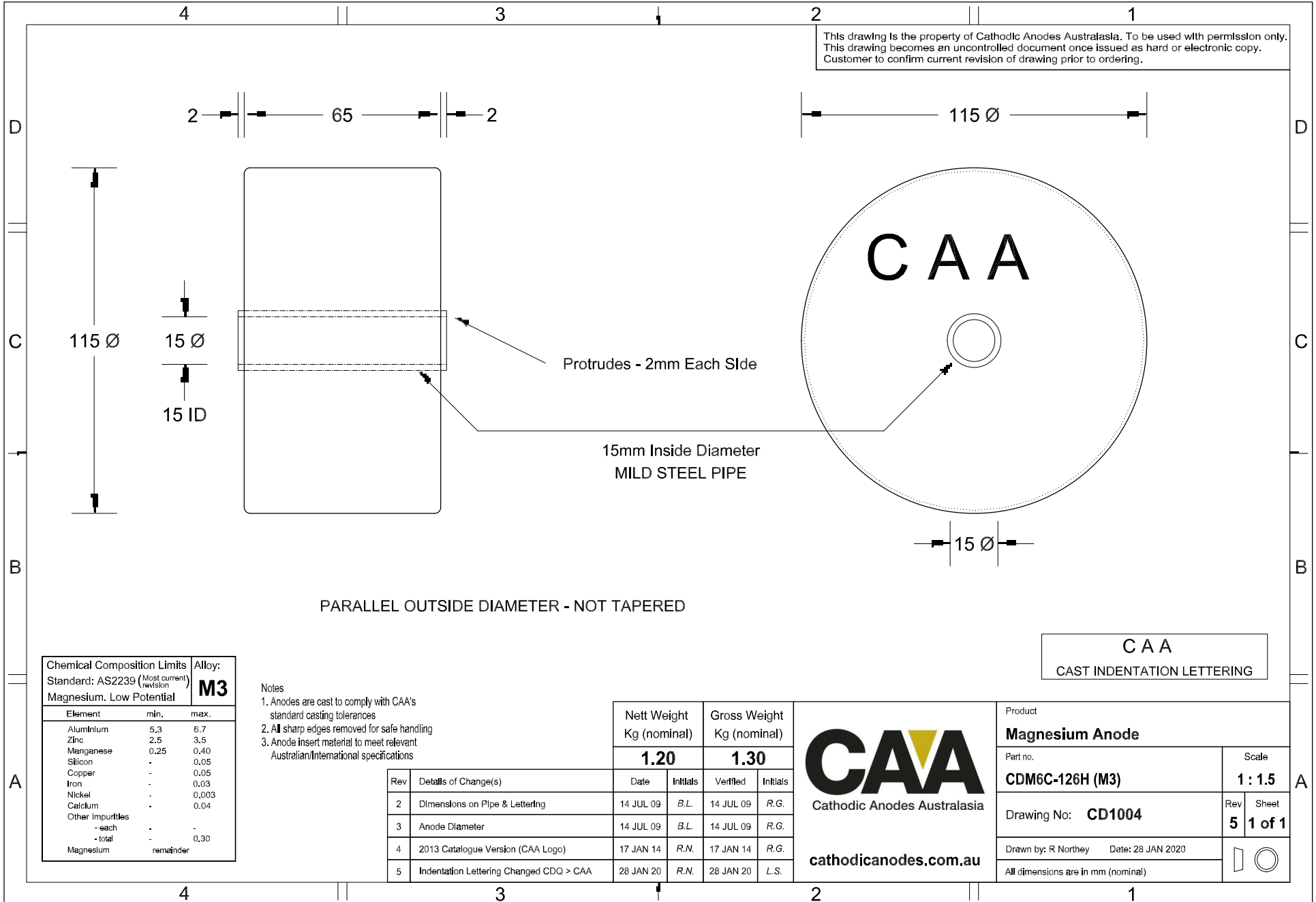


This drawing is the property of Cathodic Anodes Australasia. To be used with permission only. This drawing becomes an uncontrolled document once issued as hard or electronic copy. Customer to confirm current revision of drawing prior to ordering.



PARALLEL OUTSIDE DIAMETER - NOT TAPERED

CAA
CAST INDENTATION LETTERING

Chemical Composition Limits		Alloy:
Standard: AS2239 (Most current revision)		M3
Magnesium. Low Potential		
Element	min.	max.
Aluminium	5.3	6.7
Zinc	2.5	3.5
Manganese	0.25	0.40
Silicon	-	0.05
Copper	-	0.05
Iron	-	0.03
Nickel	-	0.003
Calcium	-	0.04
Other Impurities		
- each	-	-
- total	-	0.30
Magnesium	remainder	

Notes

- Anodes are cast to comply with CAA's standard casting tolerances
- All sharp edges removed for safe handling
- Anode insert material to meet relevant Australian/International specifications

Nett Weight Kg (nominal)	Gross Weight Kg (nominal)
1.20	1.30

Rev	Details of Change(s)	Date	Initials	Verified	Initials
2	Dimensions on Pipe & Lettering	14 JUL 09	B.L.	14 JUL 09	R.G.
3	Anode Diameter	14 JUL 09	B.L.	14 JUL 09	R.G.
4	2013 Catalogue Version (CAA Logo)	17 JAN 14	R.N.	17 JAN 14	R.G.
5	Indentation Lettering Changed CDQ > CAA	28 JAN 20	R.N.	28 JAN 20	L.S.

CAA
Cathodic Anodes Australasia
cathodicanodes.com.au

Product Magnesium Anode	
Part no. CDM6C-126H (M3)	Scale 1 : 1.5
Drawing No: CD1004	Rev Sheet 5 1 of 1
Drawn by: R Northey Date: 28 JAN 2020	
All dimensions are in mm (nominal)	